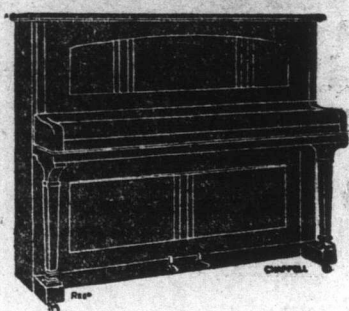


**KOHLER & CAMPBELL PIANOS AND  
PLAYER PIANOS.**



Built to stand any climate. Exported all over the world. Send for literature.

**MUSICIANS' SUPPLY COMPANY,**  
Royal Stores Furniture.

**SUITS THAT SUIT**

at  
**Prices that will Please**

We are slashing the prices of all our stock of Ladies' Suits rather than carry them over until the Fall.

Our entire stock of Ladies' Costumes—exclusive and becoming Models in Serge, Gabardine and Cloth—is now on sale at a great reduction.

We shall be glad to have you see these Suits, try them on, and compare their quality, style and value with those elsewhere. A few of our special bargain prices are given below.

Regular \$35.00. Now ..... \$27.00  
Regular \$41.00. Now ..... \$33.00  
Regular \$48.50. Now ..... \$38.00  
Regular \$59.50. Now ..... \$47.00

**U.S. Picture & Portrait Co.,**  
Saint John's.

*Libby's*  
**Pure Jellies**

Apple Raspberry  
Currant Strawberry

SOLD BY ALL GROCERS.

**Sugar! Sugar!**

To the Grocers of Nfld.

You are now free to purchase White Sugar without Brown,

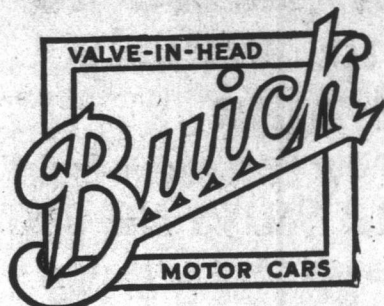
All orders intrusted to us will be promptly filled.

**George Neal.**

**Now in Stock.**

Box Apples, all counts.  
Box California Oranges, all counts.  
Barrels Cabbage, Sacks of Silver Peel Onions.  
Barrels Parsnips, Barrels Carrots.  
Prices right.

**Burt & Lawrence, 14 New Gower St.**



Make your Motoring season an enjoyable one by owning the Car that all other motorists look upon with envy—the Buick Six is the most envied car in St. John's.

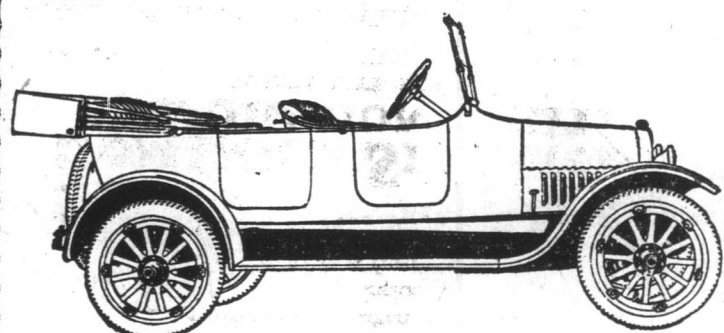
The Buick is always ready to take you anywhere you desire to go—it never falters.

When you press the starting pedal of the Buick, you are assured immediate response—the Delco starter is always on the job to turn over your engine every time you require it.

Buick Cars are luxuriously equipped, and upholstered in genuine black leather—no imitation. Strength of construction is an inherent quality of all Buicks. With the new Sixty Horsepower Valve in Head engine sixty miles an hour is easily accomplished, besides hills are made short work of.

A new and valuable feature is the entirely enclosed valves and engine, thus keeping out all grit and dust and giving longer life to the car, consequently the Engine is noiseless.

We shall be happy to let you look over our 1919 Buick Six which recently arrived—you will be convinced why it is the most envied car once you have examined it.



**BERT HAYWARD,**

Bank of Montreal Building. P. O. Box 246.

**"Review of the  
Bond Market in Canada  
for 1918"**

By J. W. MITCHELL, Vice-President,  
Dominion Securities Corporation, Limited

Constant familiarity with current financial events is one of the prerequisites of successful investing.

We have prepared a pamphlet briefly reviewing the Canadian financial situation during the year 1918. Final figures for the Victory Loan and comparative statistics of Canadian bond sales, 1910-1918, are included. We shall be glad to furnish a copy on request.

**DOMINION SECURITIES  
CORPORATION LIMITED**

CANADA LIFE BUILDING MONTREAL London, Eng.

C. A. C. BRUCE, Agent, St. John's.

**United States  
Steel Products Co.**

Manufacturers of

COLUMNS, GIRDERS, BEAMS,  
CHANNELS, ANGLES,  
STRUCTURAL STEEL PLATES,  
TWISTED & DEFORMED REINFORCING  
BARS,  
TRIANGULAR MESH REINFORCEMENT,  
GALVANIZED CORRUGATED SHEETS,  
STEEL PLATES for Shipbuilding, Tanks and  
Boilers, etc.  
STEEL SHAFTING (Cold Rolled).  
DRILL and TOOL STEEL,  
REVERSIBLE METAL LATH for Plastering.  
Have us to quote on your specifications.

**P. C. O'DRISCOLL, Ltd.**

Agents for Newfoundland.

Jan 25, Sat, Tues. Th

**PUBLIC NOTICE!**

Under the provisions of the War Measures Act, and the Food Control Act, and on recommendation of the Board of Food Control, His Excellency the Governor in Council has been pleased to direct that, on and after Monday, March 17th instant, the Regulation of August 14th, 1918, requiring that no sugar be sold after that date in quantities of more than 50 lbs., without permit from the Food Control Board, and the Regulation of December 10th, 1918, requiring the sale of white and brown sugar on a pound for pound basis, shall be cancelled. The present Regulation removes all restrictions on the sale of sugar within this Dominion.

W. W. HALFYARD,  
Colonial Secretary,  
Department of the Colonial Secretary, March 15th, 1919.  
mar15,3i



**CASH'S  
Tobacco  
Store**

wishes to draw smokers' attention to the large and well assorted stock of

**Pipes, Tobacco and  
Smokers' Articles,**

also to say that in connection with our Pipe Department we have added a

**Pipe Hospital,**

where ordinary repairs can be done and stems fitted at the shortest notice.

**JAS. P. CASH,**

TOBACCONIST,  
Water Street, - - - St. John's.

There is no Coal in  
Town better than  
Our Reliable  
**Soft Coal.**

Also, in Store, Best  
English  
**Hard Coal.**

We solicit your  
orders.

**M. MOREY & CO.**

**J. J. ST. JOHN.**

All Ready for You,  
Mr. Man!

3000 brls. FLOUR—  
Best brands; some  
white while it lasts.  
210 brls. HAM BUTT  
PORK at \$44.00 brl.  
185 brls. BEST BONE-  
LESS BEEF — Very  
tender.  
65 brls. SPARE RIBS.  
130 puncheons—and brls.  
Very Best MOLASS-  
ES — Grocery and  
Fancy.  
500 bags PURE WHITE  
CORN MEAL, Table.  
350 bags YELLOW  
FEED MEAL.  
2000 bags CATTLE FEED  
from \$4.50 bag.  
95 Half Chests TEA—  
Great value.  
And a full line of GROCER-  
IES at Bottom Prices.

**J. J. ST. JOHN.**

136 and 138 Duckworth St.

MINARD'S LINIMENT FOR SALE  
EVERYWHERE.

**Reid-Newfoundland Company.**

**S. S. KYLE.**

The S.S. "Kyle" is expected to sail from St. John's direct for North Sydney or Louisburg at 10 a.m. Saturday, March 22nd, taking passengers.

**Reid-Newfoundland Company.**

**Just \$3,400 Worth.**

You can invest any amount between \$100 and \$1,000 while the above lasts of our guaranteed offering of

**Spokane Valley Railway First Mortgage  
Bonds.**

Each Bond matures in August 1921, and carries 15 per cent. interest for that period. In addition, you are given 35 free shares with each bond and a guarantee to buy back these 35 shares for \$35 at maturity. The whole business nets you just fifty per cent. profit in 2½ years and your money back, but remember—we have only \$3400 worth.

DON'T BE TOO LATE FOR THIS PROFIT-MAKER.

**J. J. LACEY & COMPANY, Limited,**  
City Chambers.

**EYE STRAIN at CLOSE WORK**



Do your eyes bother you when knitting, sewing or reading? If so, they should not, for a pair of TRAPNELL'S carefully prescribed Glasses, which are properly fitted, will give you ease and comfort.

See Us To-Day.

**R. H. TRAPNELL'S  
Limited,**  
Eyesight Specialists.

**Dried Fruits.**

California Raisins, 3-Crown, loose.  
Seeded Raisins, 36-1's.  
Seedless Raisins, 50-1's.  
Sultana Raisins, 50's, loose.  
Evaporated Apricots, 25's.  
Evaporated Peaches, 25's.  
Evaporated Apples, 50's.

Telephone 393.

**F. McNamara,  
QUEEN STREET.**

Advertise in The Telegram

TWELVE PAGES TO-DAY THE

WEATHER FORECAST.

TORONTO, Noon—Strong N.E. wind cloudy, with local rain to-day and on Saturday.  
ROPER & THOMPSON—Bar. 29.92; Ther. 33.

VOLUME XLII.

**FISH HOOKS**

**Auction Sales!**

PUBLIC AUCTION.

To-Morrow, Saturday,

at 11 o'clock.

At the Central Auction Mart

Beck's Cove.

(To close out sales.)

15 brls. YELLOW ONIONS.

10 brls. FISH FEET.

10 brls. HOOKS.

10 brls. BAKING POWDER, 1 lb. tins

10 brls. SALT.

10 brls. CHARCOAL BURNER.

10 brls. PIANO LAMP and IRON STAND.

10 brls. LOT ODDS and ENDS.

10 brls. STOVE, No. 7.

10 brls. OAK FENDER.

10 brls. LOT VENETIAN BLINDS.

10 brls. 4 bundles SHINGLES, 2 TABLES.

10 brls. WASHSTAND, 1 CHERN.

10 brls. BEDSTEAD, 1 LARGE SPY GLASS

10 brls. BOILER and SUNDRIES.

**M. A. BASTOW,**

mar21,1i Auctioneer.

**AUCTION SALE**

— OF —

**Water Street Real Estate**

We have been favoured with instructions from the Executors of the

ESTATE OF WILLIAM J. CLOUSTON, to sell by Public Auction, on the

premises, on

**SATURDAY, the 29th day**

**of March inst.,**

**AT 12 O'CLOCK, NOON (Sharp)**

**THAT LEASEHOLD PROPERTY**

**No. 196 Water Street.**

Known as McCoubrey Building.

This property is suitable for either

wholesale or retail trade; large base-

ment. Ground rent only \$150.00 per

annum. Lease 7½ years from May

1st, 1913. Immediate occupation. For

further particulars apply to THE

**EASTERN TRUST CO., Pitts' Bldg.,**

Water St.; or,

**FRED. J. ROIL & CO.,**

AUCTIONEERS,

Smallwood Building, Duckworth St.

mar14,12i

**SPECIAL!**

**Cabbage  
8c lb.**

**M. J. O'Brien,**  
42 New Gower St.

**JUST ARRIVED.**

First-Class  
**CABBAGE,  
TURNIPS,  
BEETS,  
CARROTS,  
PARSNIPS.**  
PRICES RIGHT.

**The North American  
Copper & Metal Co.**

Tel. 367. Clift's Cove.

mar1,5i

**Grove Hill Bulletin**

WREATHS & CROSSES.  
CARNATIONS,  
NARCISSUS,  
LETTUCE,  
PARSLEY.

Terms: Strictly Cash.  
Phone 247.

**J. McNeil,**  
Waterford Bridge Road.