

skoka

FE 3095

M 88

M 75

1920

1920

1920



INDIAN RIVER

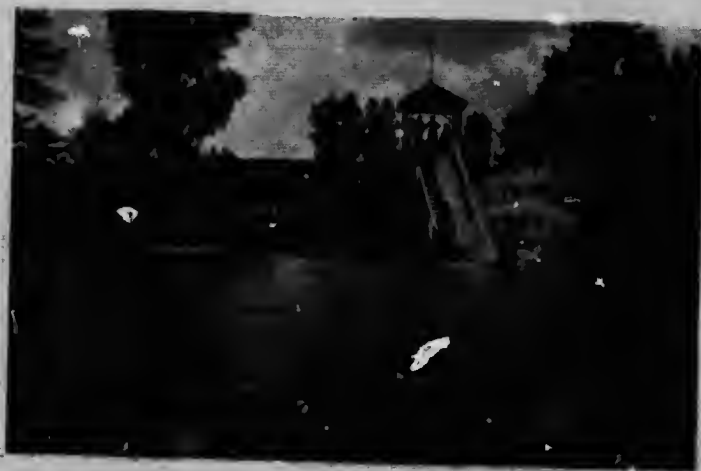
an open hand as a solace during the de-
months.

ne least of the advantages of this de-
an has co-operated with Nature to bring
easy reach of the more populous centres
North America. Straight as an arrow
aps better still, as a needle threading a
ake Shore Line of the Dominion Govern-
y System strikes north from Toronto
of Lakeland, giving direct and rapid ap-
s holiday resorts of this section of On-
de luxe, especially provided for sum-
all that the most exacting traveller
omfort and convenience, operating on a
direct connections with steamboat lines
akes.

air trip over this alluring route, just to
charms, and then, having savored its
will be keen to journey over it in earnest
, our train leaves Toronto, looking its

fairest amid the flowers and foliage that embower its beautiful residential streets, not by any commonplace route, but winding up and up to the open country through the picturesque Don Valley, lying to the east of the city. We then pursue our way almost due north across rich farming land until the broad expanse of Lake Simcoe swings into view six miles south of Beaverton. This big lake lies at the threshold of the lake country, and, while it lacks the wild and rugged aspect of the more northerly waterways, it has soft and pleasing charms of its own.

Beyond Lake Simcoe the Canadian National Railways' line continues its northerly course, spanning the upper end of Lake Couchiching and clinging to the lovely shores of the Severn River and Sparrow Lake. The latter has of recent years developed into a most popular resort. Its shores reflect in miniature the beauties of its larger and more famous neighbors to the north, the Muskoka Lakes, while it possesses the added advantage of being near a farming district, whence fresh supplies of all kinds are readily obtainable. Its proximity to Toronto—the distance can be covered in less than three hours—renders its resorts particularly attractive to week-end visitors.



WATER CHUTES, ENDIANG HOUSE, INDIAN RIVER

