

# entertainment 16 -THE BRUNSWICKAN

## Workshop Productions Succeeds

FEBRUARY 1, 1980

By THERESA BUNSBURY

UNB's Workshop Productions captured two awards this fall at the New Brunswick Drama Festival for their presentation of *The Glass Menagerie* by Tennessee Williams. Associate Dean of Arts Alvin Shaw was named best director while UNB student Alice Hamilton received the best actress award. The festival, held at Le centre Communautaire de Ste. Anne, attracted entries from St. Thomas University, Mount Allison University and a civic group from Riverview, the Riverview Players as well as Workshop Productions.

Workshop Productions is an outgrowth of English 2140 and 3150 being the practical application of course material. The second production of the year, scheduled for mid-March will be improvisations based on three of Chaucer's *Canterbury Tales*. This is the first original work the group has produced. A possibility exists that plays written by students in Prof. Thompson's creative writing class will be staged in the future.

Many aspects of the theatre production are discussed and explored in English 2140 under Prof. Mulally's guidance. This course tries to provide the student with knowledge about drama literature as well as to prepare him for future involvement with theatre.

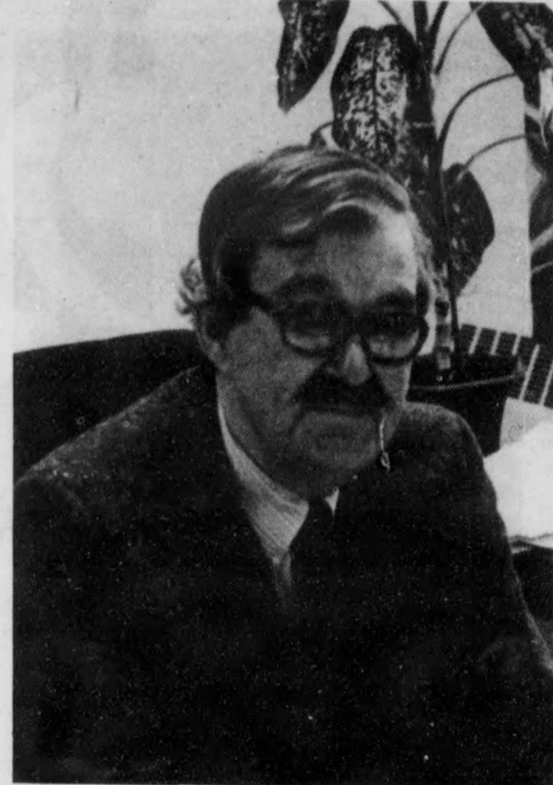
Involvement in some aspect of stage production is required of all students taking English 2140. In fact, the students are virtually responsible for all aspects of the production. Only director is taken

over by Professor, namely Alvin Shaw while Mulally assists in some technical matters. Former students not presently enrolled in the course also participate.

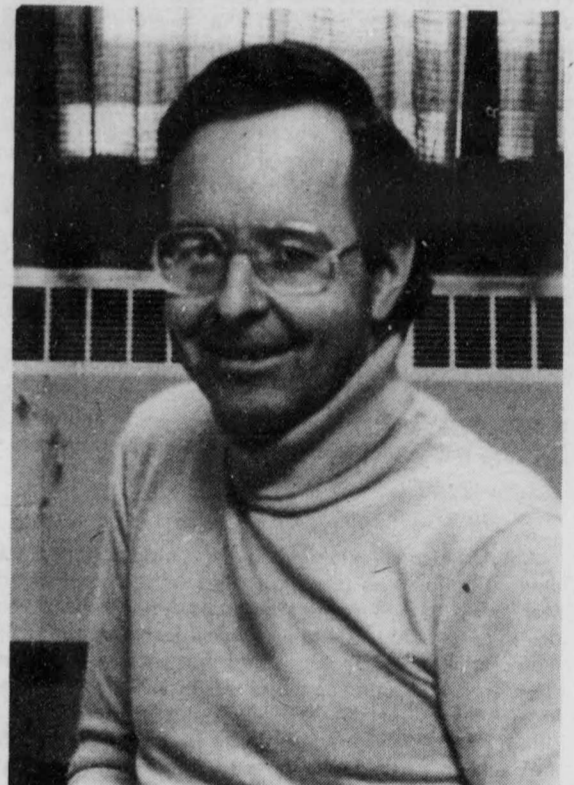
Shaw said that Workshop Productions will put on almost anything. For example, last year *J.B.* was presented and in previous years *Our Town* as well as *Juno and the Peacock*. Shaw looks for plays which offer a challenge to the student. He believes that a director's task is to try to "assist the student and actor to an understanding of his role and of the author's intentions in the play." He stated emphatically that the function of the director was not to act as a puppet master, pulling strings, but rather to assist the actor to create for himself.

The second theatre course offered by UNB is actually given at the Playhouse. Playhouse Director Malcolm Black works in close conjunction with Mulally to coordinate this programme, students assist TNB productions, giving them a unique opportunity to work with professionals and to be exposed to the demands of professional theatre. Mulally indicated that a sharing and cooperation exists between TNB and the university is found few places in Canada.

Shaw has been a moving force in theatre at UNB, being faculty advisor for the UNB drama society for twenty-two years. During this time, Memorial Hall has become quite a useful theatre plant, he stated. It is the only facility for theatre on campus. Makeup rooms



DWAYNE MACLAUGHLIN Photo



DWAYNE MACLAUGHLIN Photo

Associate Dean of Arts Alvin Shaw (l) directs Workshop Productions, while Professor Ed Mulally teaches theatre courses ENgl. 2140 and 3150

much improved backstage areas and technical equipment additions are among the many improvements that have been made.

Shaw feels that there is a need for better facilities which would contribute to the implementation of an active programme for theatre in the academic sense, such as

a degree programme associated with the Department of Fine Arts. At present, no such programme exists at UNB.

Having served for ten years on TNB's Board of Governors, Shaw is of the opinion that a taste for and increased awareness of theatre has been made possible by TNB's

presence in the community.

Although student interest seems to run in cycles, Shaw said that he has witnessed a gradual interest in theatre. From the modest beginnings of audiences numbering no more than thirty five now full scale productions attract large and enthusiastic audiences.

## Folk Collective

The Folk Collective holds its 6th Coffeehouse of the season, TONIGHT at Memorial Hall. Doors open at 8:30 and the price is FREE for members, \$1 for non-members. This coffeehouse will offer an exciting and diverse line-up of local/UNB talent.

The trio of John Bingham, John Lawrence and Janice will offer some modern folk songs. Another trio composed of Rick Valenta, Graham Young and Carolyn Young will perform some exciting classic/folk material. Jerry Van Wart, at the Woodshed not too long ago, will play some classical guitar. Mark Krismanson will perform a set of his progressive acoustic (almost New Wave) songs. Geordie Haley will do original material. Derek Roche, winner of last years Maritime Intercollegiate Folk Festival will be doing some melodic, mellow songs. As well, Mike Doyle, Joan Wellhanger and Andrew Bartlett shall have the stage for a few songs.

There will obviously be no lack of variety and this coffeehouse promises to be an extra good time. Coffee, tea, cider and munchies will be available like always. Come along and bring a friend to the incomparable Folk Collective coffeehouse.

Remember as well the Open Stage Night, every Thursday evening in the Woodshed, top floor of the SUB. All shy or courageous singers, musicians, comedians and stage bold weirdos are invited to come up around nine o'clock. The Public is invited. It's free and the entertainment promises to be good.



ANNE KILFOIL Photo

## The Brass Menagerie

will be performing at Christ Church Cathedral Feb. 4. Music in the style of the Canadian Brass is promised: concert begins at 7:30.

The Bel Canto singers will share the programme