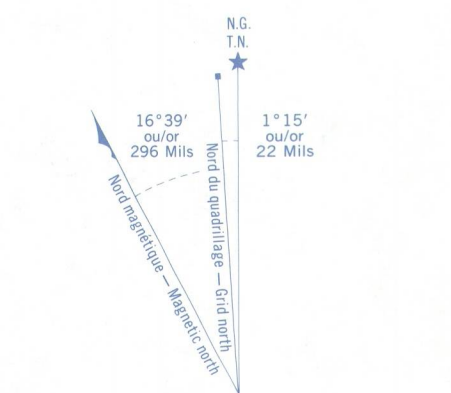
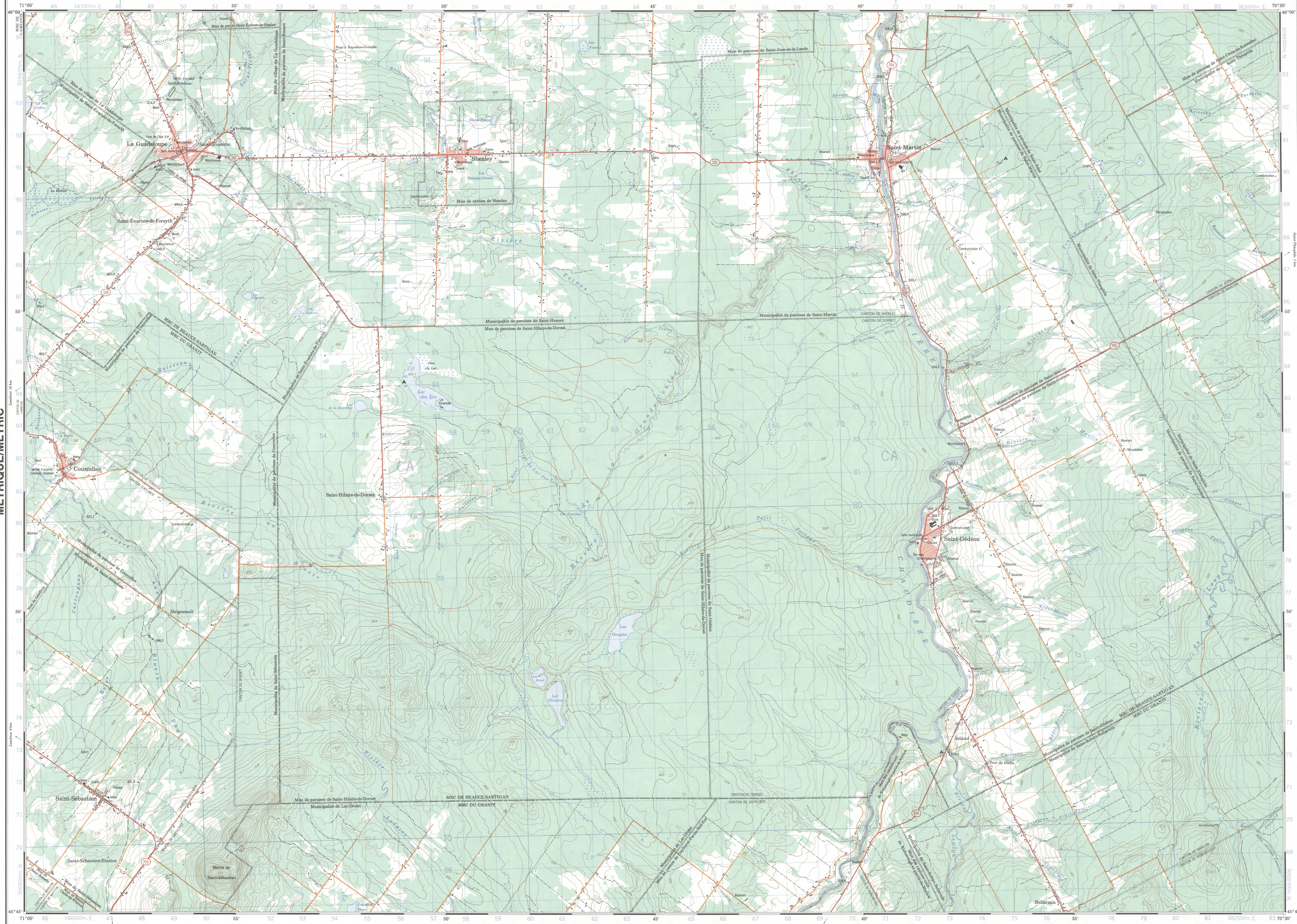


Référence de cette carte: SÉRIE A 763 SÉRIE pour usage militaire; CARTE 21 E/15 MAP Military users, refer to this map as: EDITION 5 MCE EDITION



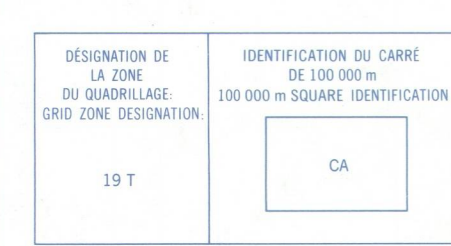
MÉTRIQUE/METRIC

MÉTRIQUE/METRIC

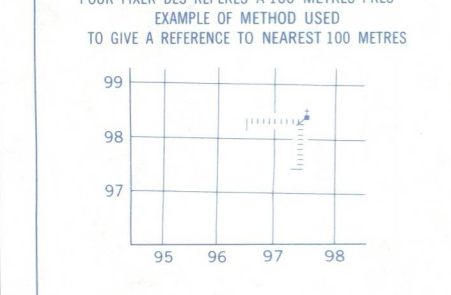


Utiliser le diagramme pour obtenir les valeurs numériques de l'échelle de référence, approximativement au centre de la carte en 1990. Note: values are approximate 0.2.

QUADRILAGE UNIVERSEL TRANSVERSE DE MERCATOR DE MILLE MÈTRES ZONE 18 ONE THOUSAND METRE UNIVERSAL TRANSVERSE MERCATOR GRID



DESIGNATION DE LA ZONE DU QUADRILAGE GRID CODE IDENTIFICATION DU CARRÉ DE 100 000 m SQUARE IDENTIFICATION



EXEMPLE DE LA MÉTHODE EMPLOYÉE POUR FIXER DES REFFÈRES À 100 MÈTRES PRÈS TO GIVE A REFERENCE TO NEAREST 100 METRES



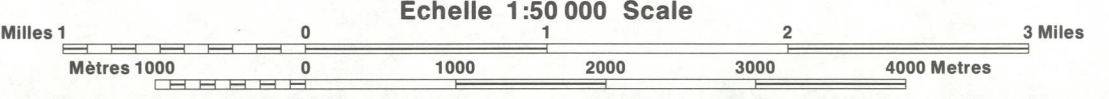
SUPERSEDED EDITION

Table with 4 columns and 4 rows of map coordinates and dates.

ÉTABLI PAR LE CENTRE CANADIEN DE CARTOGRAPHIE, DÉPARTEMENT DE L'ÉNERGIE, DES MINES ET DES RESSOURCES. INFORMATION CURRENT AS OF 1997. PUBLISHED BY THE CANADIAN MAP OFFICE, DEPARTMENT OF ENERGY, MINES AND RESOURCES, OTTAWA, ON YOUR NEAREST MAP DEALER.

LA GUADELOUPE QUÉBEC QUEBEC

ÉCHELLE DE CONVERSION DES ALTITUDES CONVERSION TABLE FOR ELEVATIONS



ÉQUIDISTANCE DES COURBES 10 MÈTRES Contour Interval 10 Metres

PRODUCED BY THE CANADA CENTRE FOR MAPING, DEPARTMENT OF ENERGY, MINES AND RESOURCES. INFORMATION CURRENT AS OF 1997. PUBLISHED BY THE CANADIAN MAP OFFICE, DEPARTMENT OF ENERGY, MINES AND RESOURCES, OTTAWA, ON YOUR NEAREST MAP DEALER.

LA GUADELOUPE 21 E/15 ÉDITION 5 EDITION

