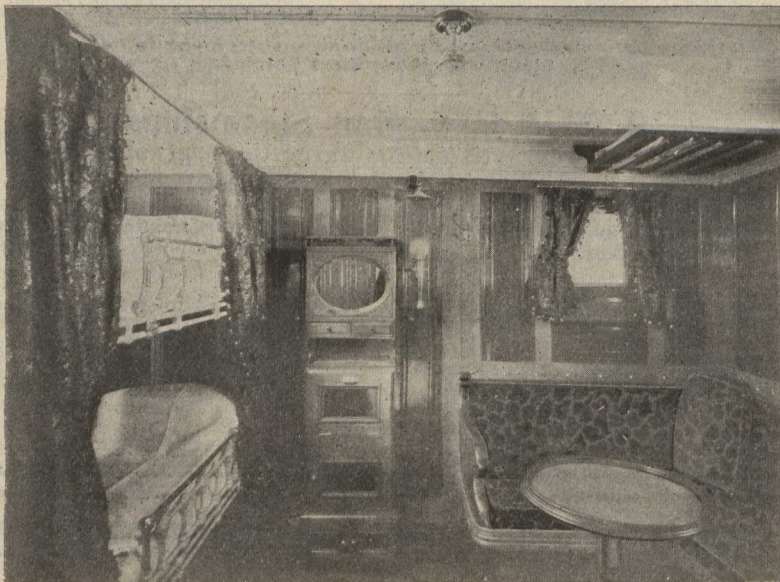


ALLAN LINE

Montreal, Portland or Halifax to Liverpool.



1st Class Stateroom on Allan Line Twin Screw Steamer Tunisian.

BAVARIAN,	-	-	10,375 Tons	TUNISIAN,	-	-	10,575 Tons
CORINTHIAN,	-	-	8,000 Tons	SICILIAN,	-	-	7,500 Tons
			PARISIAN, 5,500 Tons				

These fine new Steamers, or others of the fleet, sail **Weekly** from Liverpool and from Montreal, Portland or Halifax, calling at Londonderry.

The Steamers are amongst the largest and finest in the Transatlantic Lines, and are excelled by none in the accommodation for all classes of passengers. The Saloons and Staterooms are amidships where least motion is felt, and bilge keels have been fitted to all the Steamer's which has reduced the rolling motion to the minimum.

Electric lights are in use throughout the ships, and the cabins have all the comforts of modern first-class hotels.

The hour of sailing is arranged to make connection with trains arriving from the West and South.

Rates of Passage are lower than via New York.

For further particulars apply to any Agent of the Company.

H. BOURLIER, 77 Yonge Street, TORONTO
or H. & A. ALLAN, MONTREAL