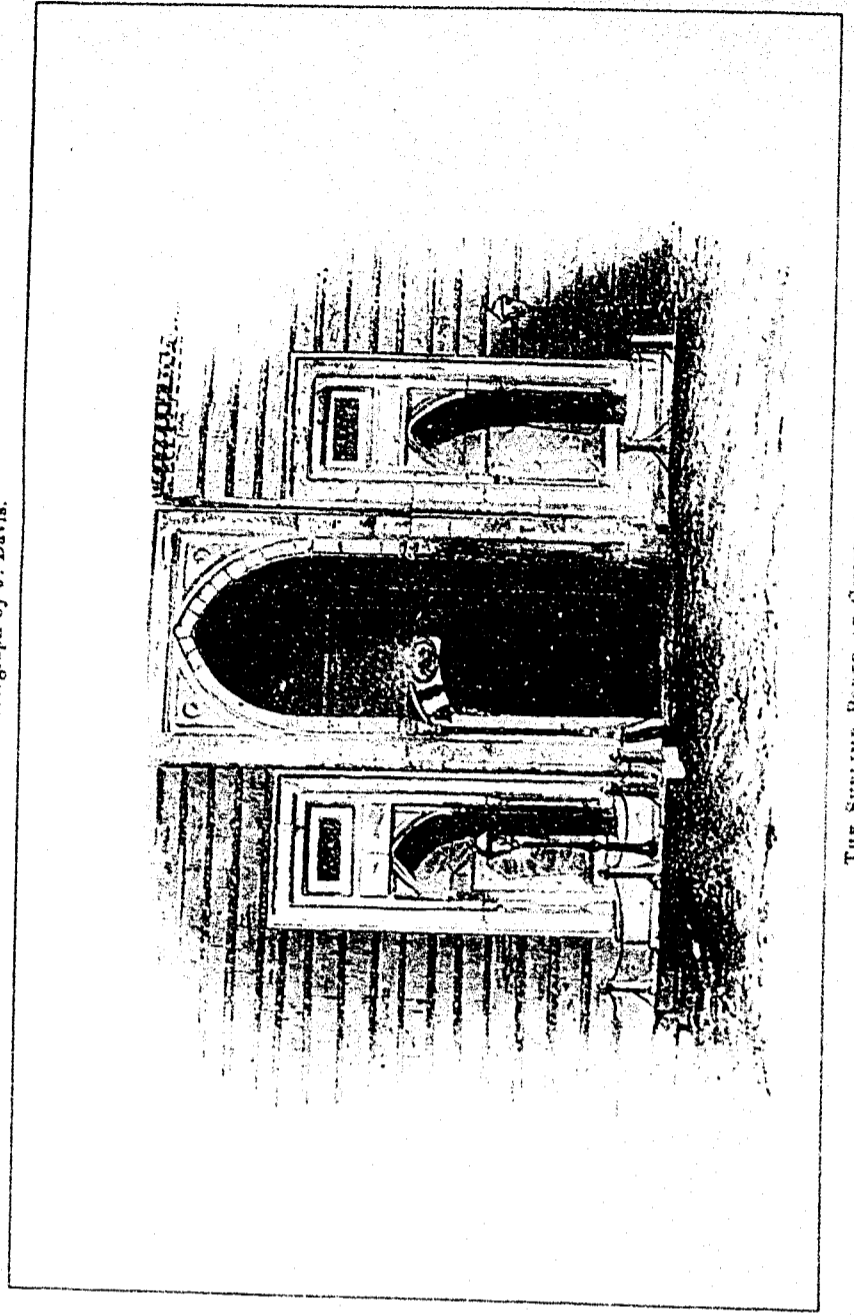
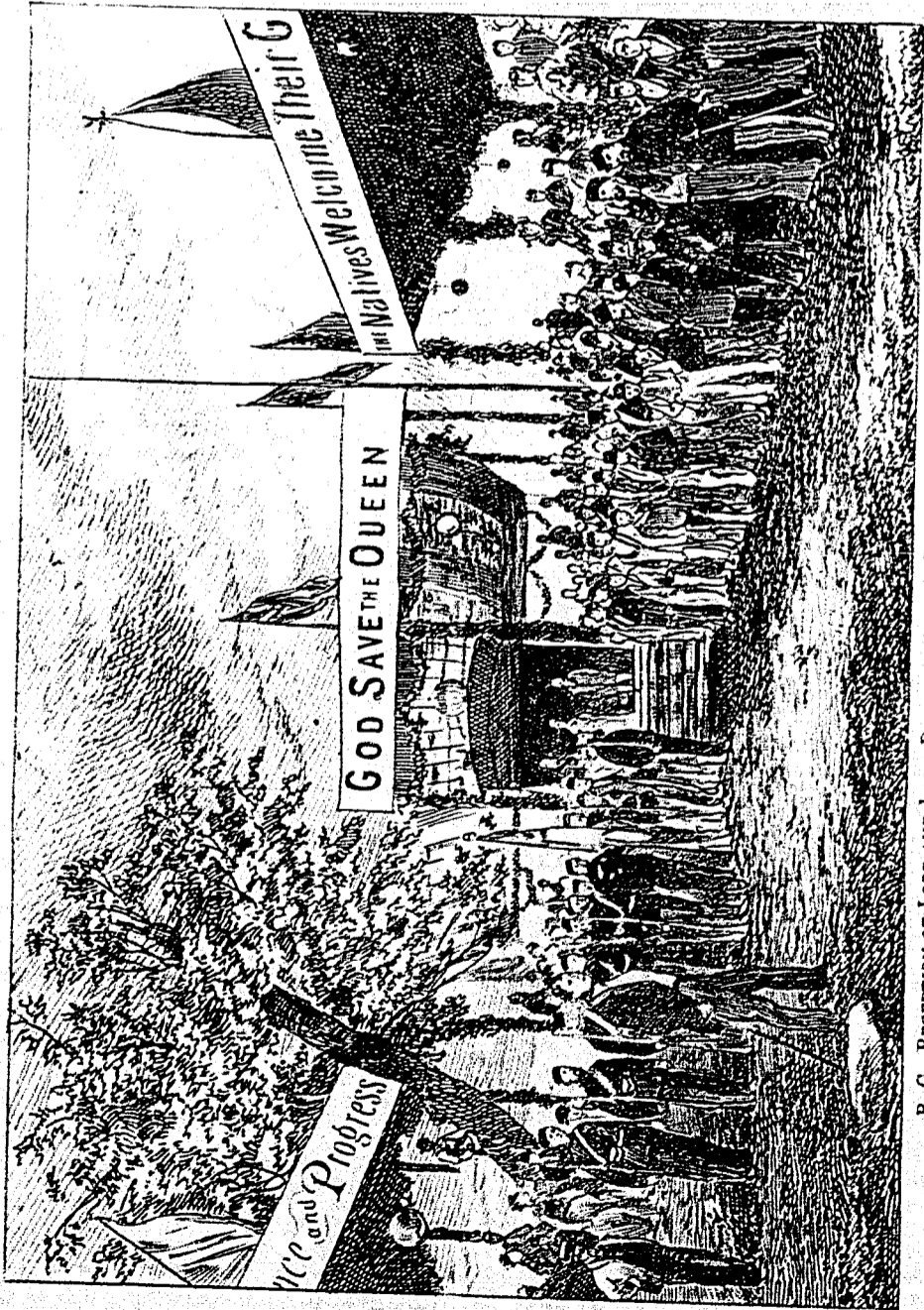


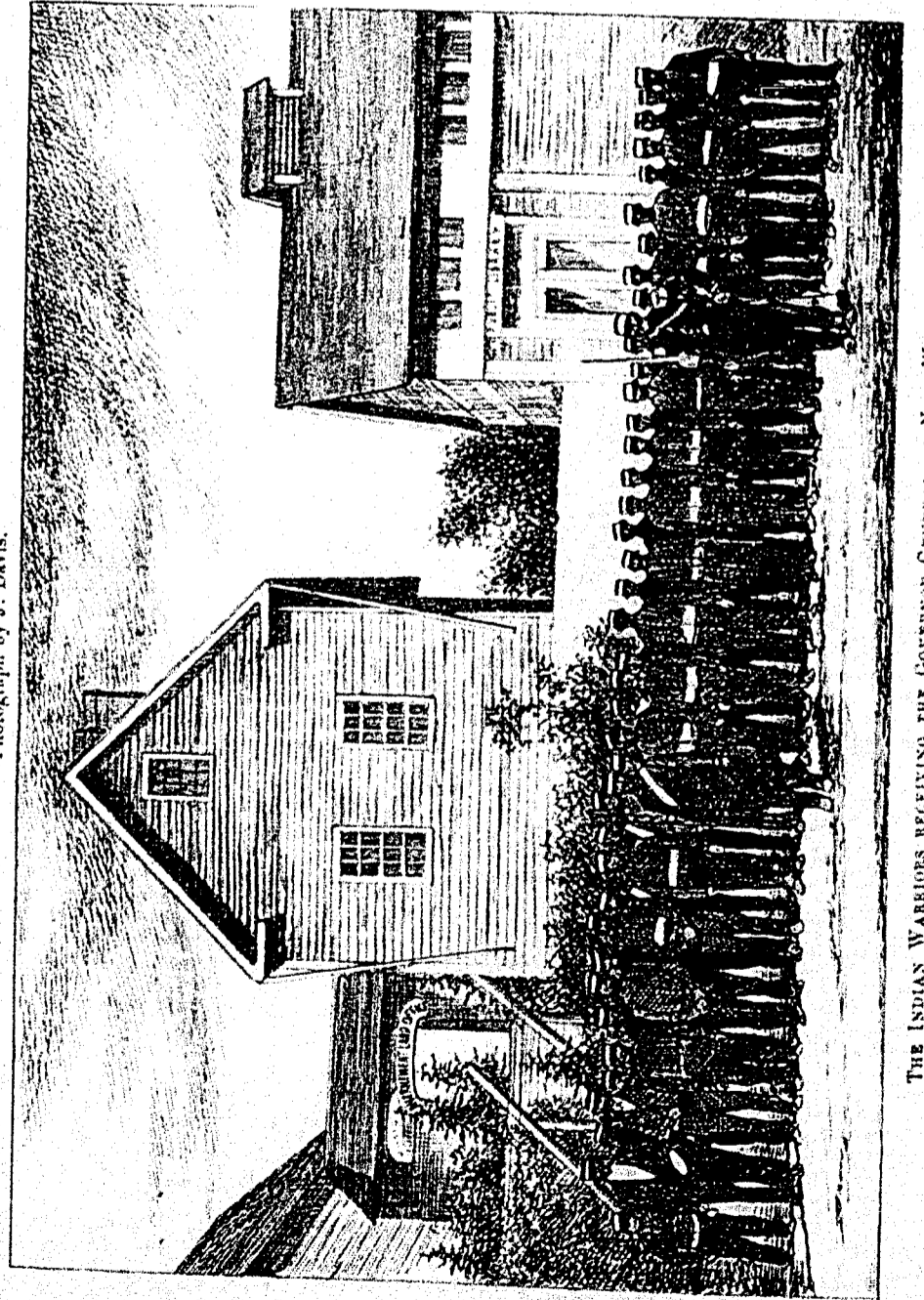
VIEW OF CITY ARCH IN COLUMBIA STREET, NEW WESTMINSTER.
 Photograph by J. Davis.



THE SUBLIME PORTE AT CONSTANTINOPLE.



B. C., RECEPTION OF LORD AND LADY DUFFERIN AT THE PAVILION, NEW WESTMINSTER.
 Photograph by J. Davis.



THE INDIAN WARRIORS RECEIVING THE GOVERNOR GENERAL AT NEW WESTMINSTER.
 Photograph by J. Davis.