

Let an I H C Engine Save You Hours of Drudgery

WHY should you waste hours of valuable time sawing wood, pumping water, shelling corn, or turning a grindstone by hand when a few cents' worth of gasoline in an I H C engine will do it all and let you use your time for important, profitable work? An I H C gasoline engine will furnish cheap, steady, dependable power for running the pump, woodsaw, feed grinder, corn sheller, grindstone, emery wheel, cream separator, churn, washing machine, wringer, etc. It furnishes power to sharpen plows and disks, light the farm buildings, and do many other kinds of work.

I H C Gasoline Engines

are simple. They are economical of fuel. They are made in all styles, vertical and horizontal, portable and stationary, air and water-cooled, in sizes from 1 to 50-H. P., to operate on gas, gasoline, naphtha, kerosene, distillate, or alcohol. Gasoline and kerosene tractors, 12 to 45-H. P. Sawing, pumping, spraying, grinding outfits, etc.

The I H C local agent will show you the engine and explain its good points. For catalogues and full information, see him, or, write the nearest branch house.

CANADIAN BRANCH HOUSES:

International Harvester Company of America
(Incorporated)
At Brandon, Calgary, Edmonton, Hamilton, Lethbridge, London, Montreal, North Battleford, Ottawa, Quebec, Regina, Saskatoon, St. John, Weyburn, Winnipeg, Yorkton.

I H C Service Bureau

The purpose of this Bureau is to furnish, free of charge to all, the best information obtainable on better farming. If you have any worthy questions concerning soils, crops, land drainage, irrigation, fertilizer, etc., make your inquiries specific and send them to I H C Service Bureau, Harvester Building, Chicago, U.S.A.



QUESTIONS AND ANSWERS. Miscellaneous.

MILKING FRESH-CALVED COW.

When a cow freshens, is it best to draw all the milk from her or just partly milk her, and leave some milk in the udder?
C. U. K.

Ans.—Never milk a freshly-calved cow dry.

TREES NEAR LINE FENCE.

1. Very close on the line fence between A and B two silver poplar trees grow. They are, I believe, on B's land, but so close as to be almost on the line. They are large, and throw their branches far out on A's side. Worse still, they send out shoots or sprouts so as to injure A's land and crops. Can B be forced to remove them, or how is A to proceed in the case?

Ontario.
Ans.—You have a legal right to cut the branches to a point even with the fence-line to prevent overhanging. We would not think of cutting a desirable species thus however, except under very exceptional circumstances. We have all too few ornamental trees, and line fences are a good place for them to grow.

A TENANCY.

1. Can I, being a tenant, let some of the land on shares to my neighbor for crop if my landlord is not satisfied, providing I seed down against it?
2. My landlord has a brother not quite right in his mind. As I have the farm rented, can I get him off in any shape? If so, what should I do? He has nothing in the farm?

Ontario.
Ans.—1. Yes, unless the lease from your landlord contains a provision against it.

2. Yes. You should first warn him that if he persists in coming upon the farm he will be treated as a trespasser. In the event of his disregarding such warning, we think you ought to request his brother—your landlord—to do what he can to put a stop to your being further annoyed. If neither course should prove effective, you might then lay an information before a justice of the peace charging trespass, and have him deal with the matter.

PARTIAL DISLOCATION OF PATELLA.

I have a colt a year old next June that has quite a puff on the stifle, and goes lame sometimes when it uses it certain ways. It is half-bred Percheron, and is a splendid colt every other way. What treatment would you recommend?
W. P.

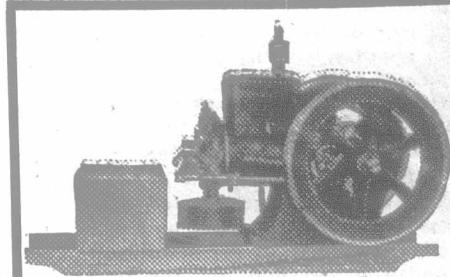
Ans.—The patella (stifle bone) becomes partially dislocated, and the puff is a porcellaneous deposit resulting from the trouble. If properly treated, your colt may still make a serviceable horse, but it is quite possible he will have a puffy enlargement below the joint. Keep the colt in a box stall. Clip the hair off the front and inside of stifle joint. Get a blister composed of 2 drams each biniodide of mercury and cantharides, mixed with 2 ounces vaseline. Rub well into the parts. Tie so that he cannot bite or lick the joint. In 24 hours rub well again with the blister, and in 24 hours longer apply sweet oil. Turn loose now in box stall. As soon as the scale comes off, tie up and blister again, and after this blister once monthly for four or five months.

TRADE TOPIC.

A WOOD PRESERVATIVE.—The high cost of labor and timber emphasizes the importance of using wood preservatives. Avenarius Carbolineum has won a most enviable record as a wood preservative and disinfectant. It is claimed to lengthen the service of the timber, thereby saving cost of material, and saving labor for repairs and replacing decayed wood. Our readers will receive full information about this excellent wood preservative and disinfectant by writing the Carbolineum Wood Preserving Co., Franklin street, New York City.

Tourist—I understand that you have relics of the war for sale, my little man? "We did have," replied the boy, "but they bought us out, an' the swords daddy buried last week won't get rusted 'fore summer."

Mount Birds
We teach you by mail to skin and mount all kinds of birds, animals, etc. Also to tan skins, etc. Decorate your home with your beautiful trophies, or command big income selling specimens and mounting for others. Easily, quickly learned in spare time by mail and without success guarantee. Write today for our free book "How to Mount Birds and Animals" absolutely free. R. W. SCHUBERT, TAXIDERMIST, 5033 Divided Bldg., Omaha, Neb.



Simple, Durable

With no complicated working parts, "Bull Dog" Gasoline Engines are built especially for use on the farm. They will stand long and hard service out of doors.

"BULL DOG"

Gasoline Engines

are built in six sizes, from $1\frac{1}{2}$ to 16 h.p. Adapted for stationary, semi-portable or portable mounting. Liberal bearing surfaces and up-to-date construction throughout. Get prices and catalogue from our Canadian agents.

BATES & EDMONDS MOTOR COMPANY

Lansing, Michigan

General agents for Canada:

A. R. Williams Machinery Co., Limited
Toronto, Ont. St. John, N. B.

The Oil You Need for Your Separator

STANDARD HAND SEPARATOR OIL

Never Gums. Never Rusts. Never Corrodes.



Standard Hand Separator Oil feeds freely into the closest bearings and gives the best possible lubrication.

It makes your separator last longer and do better work as long as it lasts.

One-gallon cans. All dealers, or write to:

The Queen City Oil Company, Limited

Head Office, 63 Bay Street, TORONTO

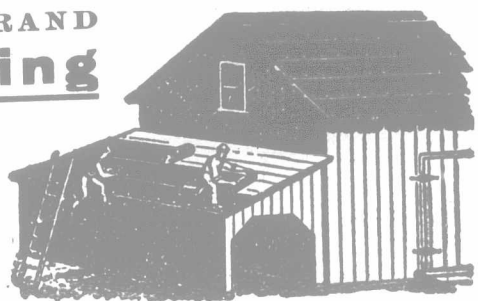
Also offices at Ottawa, Hamilton, London, Kingston, Stratford, St. Thomas, Windsor, Brockville, Owen Sound, Sault Ste. Marie

Do You Want the Cheapest and Most Durable Roofing?

USE DURABILITY BRAND Mica Roofing

For steep or flat roofs; waterproof; fireproof; easily laid. We pay the freight on all orders of five square and over to any railroad station in Ontario or Quebec. Send stamp for sample, and mention this paper.

Hamilton Mica Roofing Co.,
101 Rebecca St., Hamilton, Can.



Who Pays the Duty?

Why pay fancy prices for calf meals of foreign manufacture when you can buy CALFINE 15 to 20 dollars a ton cheaper and secure at least equal, and in most cases superior, results.

CALFINE

"The Stockman's Friend" has been most carefully experimented with at Macdonald Agricultural College, where it has given excellent results. It is now in use on some of the largest and best equipped dairy farms in the Dominion.

Ask your dealer for a 100-lb. bag of CALFINE as a trial—you will soon be back for more. If your dealer does not handle it, write us. We will do the rest.

Feeding Directions Sent on Application.

Canadian Cereal & Milling Co., Limited
TORONTO, CANADA

**RINGING IN EARS
DEAFNESS**
INSTANTLY RELIEVED BY THE OLD
**DR MARSHALL'S
CATARRH SNUFF**
25¢ AT ALL DRUG STORES OR SENT P.R.
PAID BY C. H. KEITH, 111 ELY AND DRUG

PLEASE MENTION THE ADVOCATE.