

Beyond the Experimental Stage

ALL along the line, at every point, the engineering problems peculiar to Kerosene as a fuel have been solved in the Renfrew. It is the true kerosene engine, not adapted from gasoline Engines but developed on kerosene ideas. The

Renfrew Kerosene Engine

is just bristling with advantages that coax the very last bit of power out of coal oil, reducing carbon troubles to a minimum. Run your eye down the accompanying list of features.

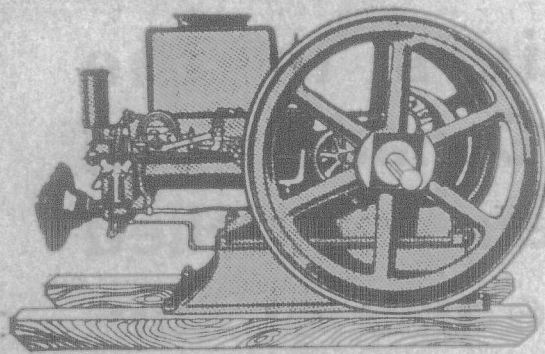
These things mean an engine you can depend on to give you real service at low cost—for kerosene is cheaper than gasoline, can be bought anywhere, and in this engine gives up all its power.

That's the Engine for you. Learn all about it now by getting our free catalogue. Write today.

The Renfrew Machinery Co., Limited

Head Office and Works, Renfrew, Ont.
Eastern Branch, Sussex, N.B.

Other lines: Renfrew Cream Separator, Happy Farmer Tractor, Renfrew Truck Scales.



Features that mean Satisfaction

STARTING—Handy Controls—three at one place, needle valves, for regulating supply of gasoline, water and kerosene, easily adjusted.

RUNNING—Special Kerosene Mixer—with auxiliary air valve, insuring properly mixed charge under full or light load.

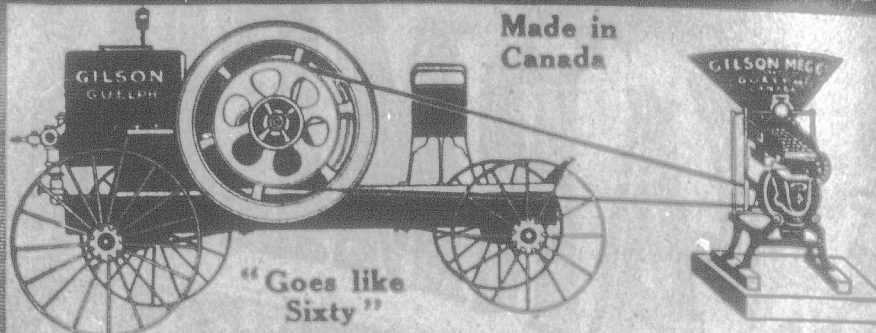
Throttle Valve, for fuel supply, controlled perfectly by sensitive governor.

Oscillating Magneto and igniter combined, makes and fires big spark, always reliable. Cooling—Ample water jacket and extra wide roomy hopper on top for water.

Perfect Alignment assured by heavy studs securing cylinder and frame (separate parts) easily renewable.

Gears—Machine cut, perfectly true and smooth, even running assured by extra heavy large diameter fly wheels.

THIS ENGINE WILL COST YOU NOTHING



Do your own grinding at your own convenience,—all your own silo,—be independent. Get a Gilson Engine on our new easy payment plan,—and it will pay for itself.

Did it ever occur to you that all the time you are doing without a Gilson Engine,—and getting your work done in a more expensive way,—you are paying for the Engine but not getting it? When you order a GILSON Engine, you get reliable power plus service. We point with pride to the many Gilson Engines, turned out in the early part of our career, that to-day are running as smoothly and giving the same reliable service as when they left our factory.

Owners of Gilson Engines will tell you frankly that their engines have actually COST THEM LESS and given them MORE SERVICE, than engines which could have been bought at a far lower first cost. Durability—dependability—SERVICE TO THE USER are the watchwords of the GILSON factory.

ALEX. SHARP, Hanover, writes as follows:—

Our 2 H.P. Gilson Engine which we bought from you eight years ago is simply a beauty. It runs any day, hot or cold, and is never the least bit of trouble to start, even when it is 35 degrees below zero.

Our season's work is chopping from 1,000 to 2,000 bushels of grain, cutting all the feed 12 head of cattle will consume in the winter, cuts from 10 to 12 acres of corn for silage and silos it, pulping 1,300 bushels of roots and cuts from 50 to 100 cords of wood.

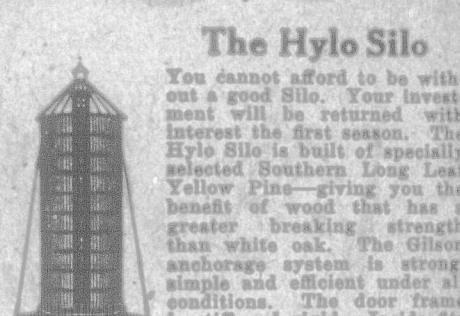
We do all our work when we want to do it, and the cost for fuel is trifling. By a careful test, I find I can do my grinding at an average cost of 1 1/2c. These are all actual facts.

GILSON Engines, Silos Silo Fillers Tractors, Threshers



to cut and elevate more ensilage with the same power than any other Blower Cutter

THE WONDERFUL "GILSON" The Gilson Silo Filler is the only blower which can be successfully operated with as little power as 4 H.P. There is a Gilson Silo Filler for every purpose,—for the individual farmer, for the syndicate, and our large capacity machines for the custom jobber.



You cannot afford to be without a good Silo. Your investment will be returned with interest the first season. The Hylo Silo is built of specially selected Southern Long Leaf Yellow Pine—giving you the benefit of wood that has a greater breaking strength than white oak. The Gilson anchorage system is strong, simple and efficient under all conditions. The door frame is stiff and rigid. Inside fits flush with the inside wall of Silo. All doors are air-tight, beveled so that they fit perfectly. Joints, staves and construction throughout is superior to anything of the kind. Silo stands rigid when empty. Send for "The Hylo Silo" catalogue. Full of interesting information and descriptions. An investigation now will save you a bigger outlay in the future.

WILL SILO FILLING TIME FIND YOU READY?

Every man who gets a GILSON product secures for himself SAFETY, SERVICE and SATISFACTION. Write for Catalogues, stating what you are interested in

THE GILSON MFG. CO., Ltd., 319 York St., GUELPH, Ont.

YOU CAN MAKE NO MISTAKE BY USING Freeman's Fall Wheat Special Fertilizer

Low Price TWO-EIGHT-TWO High Grade

Compounded with High-grade Sulphate of Potash

Freight allowed on all orders of one-half ton lots and over in Ontario, east of Fort William and south of North Bay, with the exception of Land Plaster and Chemicals, which are net, at Hamilton. Prices subject to change without notice.

THE W. A. FREEMAN CO., Ltd., Hamilton, Ont.

The Wonderful—Light-Running Gilson Thresher



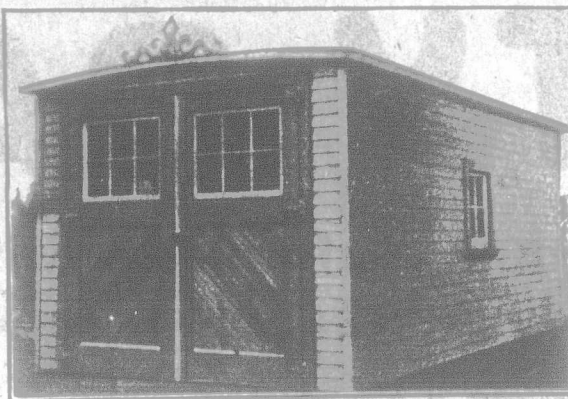
Saves Time—Money—Labor. Be independent of the gang. Keep your farm free of weeds. Do your threshing when you please, with a 6 to 12 h.p. Engine and the Wonderful Light-Running Gilson Thresher. Furnished with or without Blower. Send for full particulars. **GILSON MANUFACTURING COMPANY LTD., 489 York St., Guelph, Can.**

THE MARTIN DITCHER AND GRADER DIGS YOUR DITCHES GRADES YOUR ROADS



EASILY QUICKLY CHEAPLY REVERSIBLE ADJUSTABLE **PAYS FOR ITSELF IN ONE DAY** **DOES THE WORK OF 50 MEN SEND FOR FREE BOOKLET** **THE PRESTON CAR & COACH CO LIMITED 77 DOVER ST. PRESTON CANADA**

The Auto-Home Garage



is just what you need for your car. It is built in sections; any one can erect it. It is painted and glazed complete. Built in four sizes. Send for full particulars.

A. Coates & Sons Manufacturers

Burlington, Ontario Box 151

NORTHERN ONTARIO

Millions of acres of virgin soil, obtainable at 50c. an acre in some districts—in others, free—are calling for cultivation.

Thousands of farmers have responded to the call of this fertile country and are being made comfortable and rich. Here, right at the door of Old Ontario, a home awaits you.

For full particulars as to terms, regulations and settlers' rates, write too: **H. A. MACDONELL, Director of Colonization, Parliament Buildings, Toronto, Ont.** **G. H. FERGUSON, Minister of Lands, Forests and Mines.**

Cream Wanted

We supply cans. We pay express charges. We remit daily and guarantee highest market prices. For prompt service ship your cream to us.

Mutual Dairy & Creamery 743 King St. W., Toronto, Ont.

ROOFING MILL ENDS CHEAP

A limited quantity of High-Grade Mill Ends for sale cheap. Samples Free

FACTORY DISTRIBUTORS BOX 61 HAMILTON, CANADA.

DO YOU NEED FURNITURE

Write for our large, photo-illustrated Catalogue No. 7—It's free to you. **THE ADAMS FURNITURE CO., Limited Toronto, Ontario**

When writing please mention "Advocate"