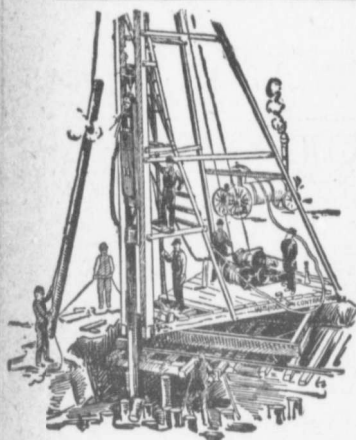


\$1.33; Northumberland street, north side, Dovercourt road to Westmoreland avenue, \$1.15; Russell avenue, Bloor street to north house No. 72, \$1.15; Margaretta street, east side, Bloor to 940 feet north, \$1.25; Adelaide street, south side, Spadina avenue to 285 feet east of Portland, \$1 1/2c; Northumberland, south, Delaware to Dovercourt, \$1.15; W. R. Payne.—Strachan avenue, east side, Clifford to Queen, \$1.37; Tyndall avenue, east side, King to 354 feet south, \$1.02. Toronto Contracting & Paving Co.—Booth avenue, east side, Queen to Eastern avenue, \$1.30; Hamil-

ton street, east side, Queen to Paul street, \$1.14. City Engineer—Roseberry avenue, north side, Bathurst street to 150 feet east, \$1.35; Simcoe street, east side, King to Wellington, \$1; Spadina crescent, east side, Russell to Spadina avenue, \$1; Broadview avenue, west side, Queen to Gerrard, \$1; Argyle street, north side, Dundas to Dovercourt road, \$1.33; Huron street, east side, Phoebe to Grange avenue, \$1.40; King street, north side, Peter to Spadina avenue, \$1; Drummond place, both sides, 63c; Strachan avenue, east side, Clifford to Queen, \$1.50; Ontario,

Duchess to Queen, both sides, \$1.33; Ontario street, east side, King to Duke, \$1.30; Duke street, south side, Ontario to Berkeley, \$1.34; King street, south side, Fredrick to Sherbourne, 21 1/2c per square foot; King street, Sherbourne to Berkeley, 21 1/2c per square foot; Francis, both sides, 18 feet south, Major to Brunswick, 83c; Adelaide, \$1.18; Sussex avenue, Dovercourt road, Queen to McKenzie, 82c; Morris street, Huron to Spadina, 67c; Morris, north, Huron to Spadina, 67c; Beatrice, east, 422 feet north of College to 500 feet further north, 68c.



## PILE DRIVING

on land or water by Steam Pile Drivers or Drop Hammers.

**Portable Boilers  
Hoisting Engines  
Pumping Machinery**

**TO LET**

Bridge Building, Trestle Work, Wharves, Dams, Diving Submarine Work and General Contracting.

**WM. HOOD & SON**

10 Richmond Sq. - MONTREAL

## DEBENTURES

Municipalities contemplating the issue of Debentures will find it to their advantage to communicate with

**G. A. STIMSON & CO.**

Investment Dealers

24 and 26 King St. W.

TORONTO

**THE DeLANO-OSBORN  
ENGINEERING CO., LTD.**

MANNING CHAMBERS, TORONTO.

**CONSULTING CIVIL, MECHANICAL AND  
ELECTRICAL ENGINEERS.**

**Pittsburgh Testing Laboratory,  
LIMITED**

Inspecting and Metallurgical  
Engineers and Chemists

SPECIALTIES: Inspection of RAILS and fall material for BRIDGES, BUILDINGS, and other structures, cast iron pipe, wood and steel railroad cars.

MANUFACTURE AND ERECTION.  
Expert examination and reports, chemical analyses and physical tests of all kinds.  
Cement Testing.

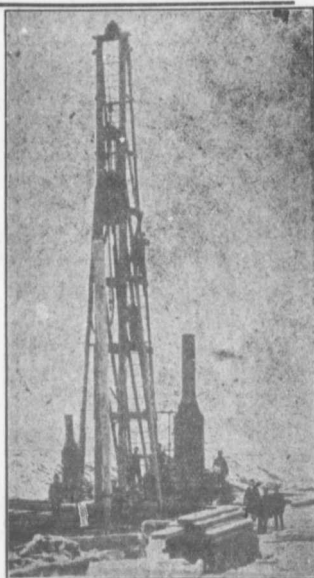
146 St. James Street, - Montreal, P.Q.

THE STEEL "CHAMPION" IS THE KING OF GRADERS

"CHAMPION" Road Machines are now in use in every Province of Canada.



\*Address for 20th Century Catalogue  
The Good Roads Machinery Co., Limited  
(Late Killey-Reckett Engine Works)  
144 YORK STREET - HAMILTON, ONT.



## PILE DRIVING

and Foundation Work.

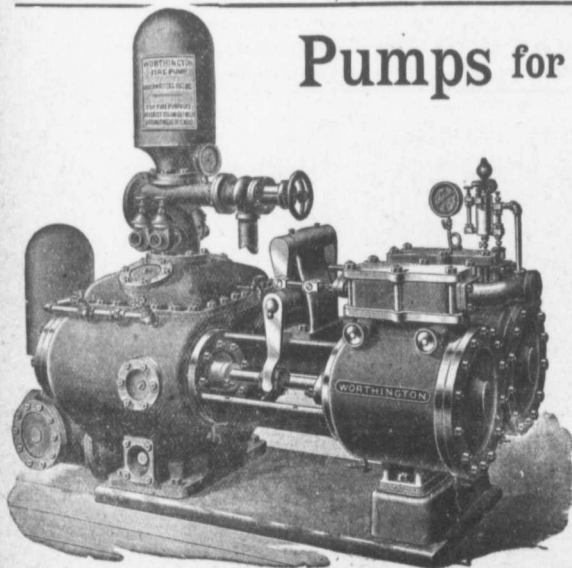
By 5-ton Automatic Steam Pile Hammer, Water Jet or Drop Hammers, Dock Building, Submarine Work and Dredging.

**BUILDING MOVER AND WRECKER**

General Contracting.

**JNO. E. RUSSELL, - Toronto**

908 Queen St. E.—Phone M. 2007.



# Pumps for Waterworks

**Waterworks Systems  
Installed**

*Steam, Hydraulic, Electric,  
Gasoline, Air Lift and  
Automatic Rams.*

**Steam Boilers and  
Filters**

*Write for Prices and Particulars*

**The John McDougall**

CALEDONIAN IRON WORKS CO., LIMITED

MONTREAL, P.Q.