



Special Steamboat Express

Will leave Toronto at 1.00 p.m. on sailing days running direct to wharf at Owen Sound in connection with

CANADIAN PACIFIC RAILWAY GREAT LAKES SERVICE

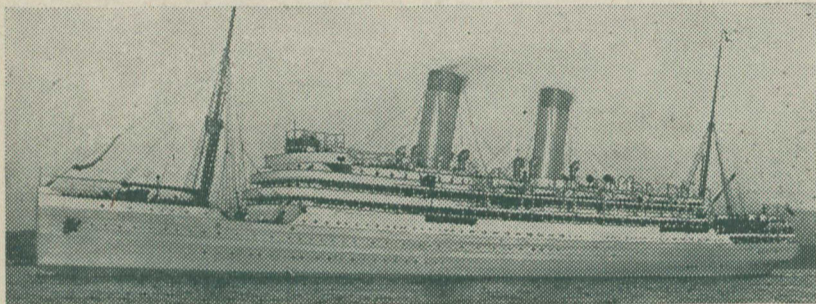
Monday	S.S. "Athabasca"
Tuesday	S.S. "Keewatin"
Wednesday	S.S. "Alberta"
Thursday	S.S. "Manitoba"
Saturday	S.S. "Assiniboia"

Sailing from Owen Sound for Soo, Port Arthur, Fort William. Direct connection for Winnipeg, Western Canada, Pacific Coast, Japan, China, Australia, etc.

ASK ANY AGENT FOR PARTICULARS OR WRITE TO

R. L. Thompson, District Passenger Agent, Toronto

Canadian Northern Steamships Limited



THE ROYAL LINE TRIPLE SCREW ROYAL EDWARD TURBINE STEAMERS ROYAL GEORGE

The New Fast Route between MONTREAL, QUEBEC and BRISTOL

Sailing from Bristol		Sailing from Montreal
May 12th	ROYAL EDWARD	May 26th.
May 26th.	ROYAL GEORGE	June 9th.
	and fortnightly thereafter	

Tickets and full information on application to any steamship agent or

H. C. BOURLIER, General Agent for Ontario Toronto, Ont. GUY TOMBS, G. F. and P. A., C. N. Q. R., Montreal, Que.

A May Sale of Lingerie Dresses Wonderful Value



We have just received a special shipment of lovely Lingerie Dresses for Summer wear, received from one of the foremost designers of the States---made of fine quality mull and batiste, handsomely embroidered and trimmed with fine Val. lace and insertions. All very dainty dresses that are sure to be popular; also some charming overskirt models---shades of sky, pink, heliotrope and white.

Prices from \$10.50, \$15, 18.50, up to \$75.00

W. A. Murray & Co. Limited.

17 to 31 King St. East, 10 to 20 Colborne St.,
Victoria St. King to Colborne St.
TORONTO



The Pioneer Route to MUSKOKA

AND THE ONLY LINE REACHING ALL THE PRINCIPAL TOURIST RESORTS OF ONTARIO.

For Descriptive and Fully Illustrated Literature Regarding:--- MUSKOKA, LAKE OF BAYS, TEMAGAMI, ALGONQUIN PARK, GEORGIAN BAY, KAWARTHA LAKES, ORILLIA AND LAKE COUCHICHING, LAKE HURON, Etc., address---

J. D. McDONALD, D.P.A. Toronto J. QUINLAN, D.P.A. Montreal

NATIONAL TRUST CO.

LIMITED

18-22 King Street East, Toronto

CAPITAL and RESERVE \$1,650,000

Funds received in trust for investment in first mortgages upon improved farm and city properties.

Correspondence and interviews solicited.

J. W. FLAVELLE, PRESIDENT.

W. T. WHITE, GENERAL MGR.

ARE YOU

on the list for a copy of

"Tours to Summer Haunts"

describing

Canadian Tours

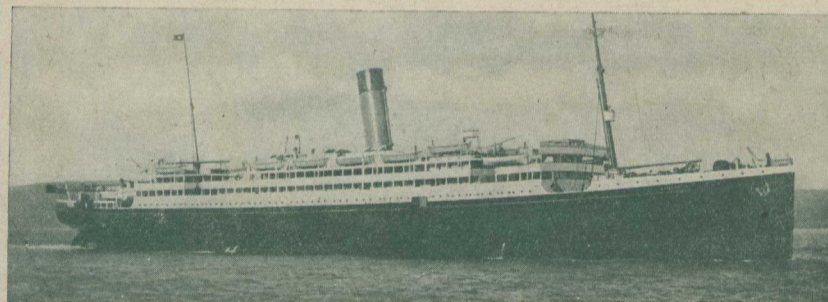
to

Canadian Resorts

BY THE SEA

In Quebec, New Brunswick, Nova Scotia, Prince Edward Island.

Write Advertising Dept Intercolonial Railway, Moncton, N. B.



WHITE - STAR DOMINION CANADIAN SERVICE ROYAL MAIL STEAMERS

1910 WEEKLY SAILINGS 1910

R. M. S. "LAURENTIC"	R. M. S. "MEGANTIC"
14,892 Tons Triple Screw	14,878 Tons Twin Screw

The largest and most modern Steamers on the St. Lawrence route

H. G. THORLEY, Passenger Agent - - 41 King Street East, TORONTO