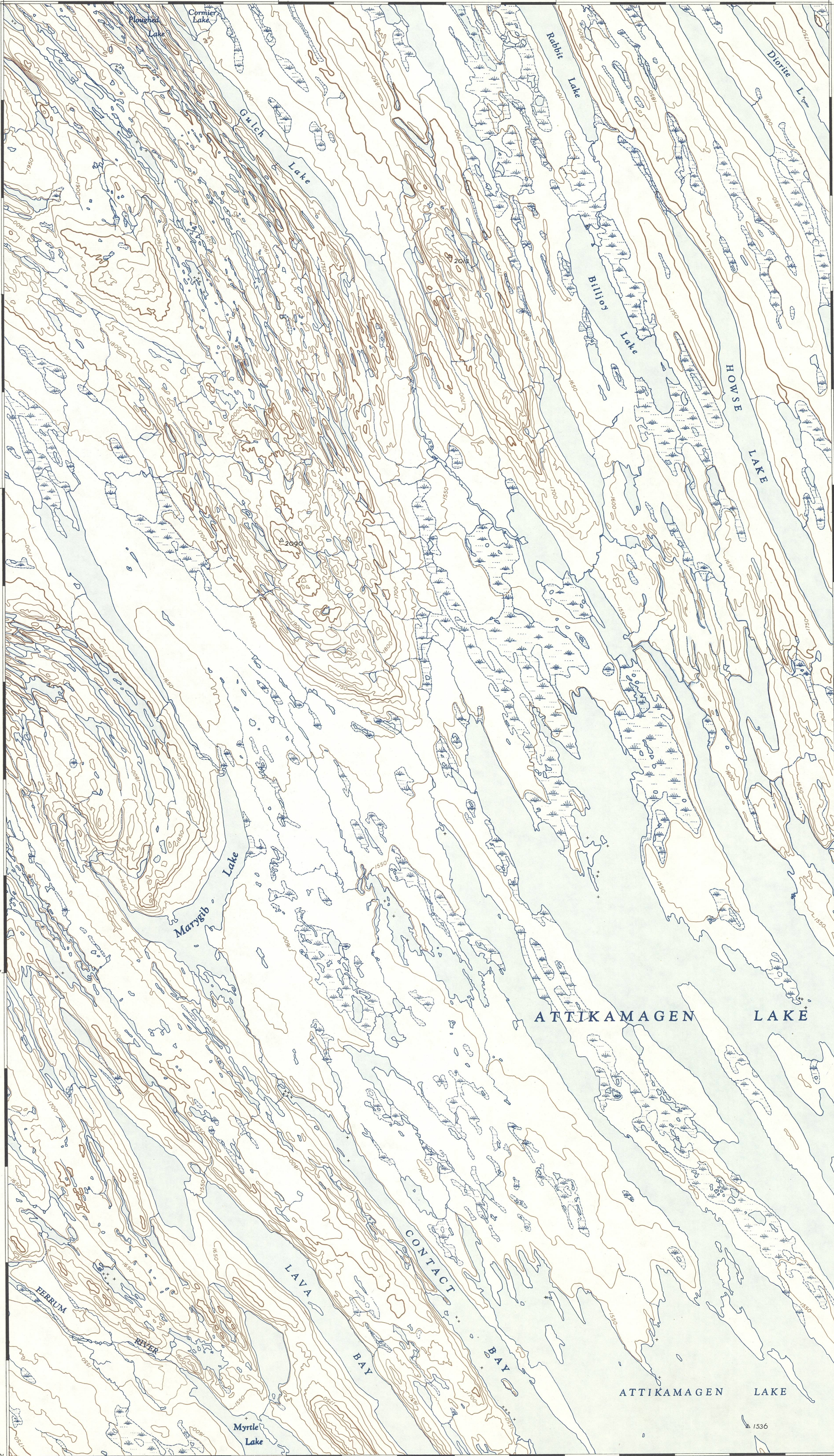


SUPERSEDED EDITION

55°15' 66°45' 40' 35' 66°30' 55°15'



CANADA

DEPARTMENT OF MINES AND TECHNICAL SURVEYS SURVEYS AND MAPPING BRANCH

REFERENCE

- Horizontal Control Point
Boundary Mon.
Spot Elevation, (in feet)
Building
Tank, Gas, Oil or Water
Church, Cemetery
School, Post Office
Mine or Open Cut
Sand Dunes
Lake, intermittent or Pond
Lake or Shoreline, indefinite
Stream, intermittent or dry
Marsh or Swamp
Inundated Land
Falls; Rapids
Foreshore Flats
Bluff, Cliff or Escarpment
Wharf or Pier
Reef; Rock or Small Island
Contours: elevation, depression, approximate

This map sheet area is open except for scattered woods in the gullies.

Index to adjoining sheets table with grid coordinates and sheet names like LAC LE FER, BACCHUS LAKE, THOMPSON LAKE, etc.

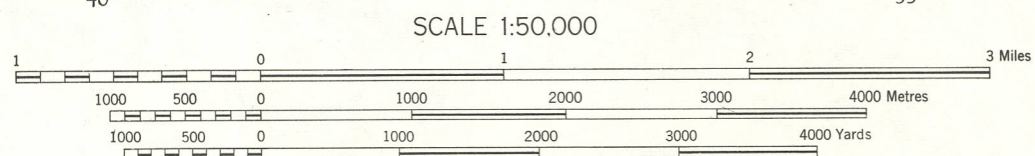
MAGNETIC DECLINATION 32°23' WEST, AT CENTRE OF SHEET 1954. Annual magnetic change 4' easterly.

SUPERSEDED EDITION

TAIT LAKE QUEBEC AND NEWFOUNDLAND

23 1/2 EAST HALF FIRST EDITION

Produced by the Surveys and Mapping Branch, Department of Mines and Technical Surveys, 1954, from air photographs taken in 1948. The Quebec-Newfoundland boundary has not been surveyed and monumented on the ground at date of publication. Printed by the Army Survey Establishment, R.C.E. Department of National Defence, 1953. The general public may obtain copies of the map from the Map Distribution Office, Dept. of Mines and Technical Surveys, Ottawa, at 25 cents per copy.



CONTOUR INTERVAL 50 FEET North American Datum 1927 Elevations, in feet, based on Geodetic Vertical Angulation referred to sea level

55°00' 66°45' 40' 35' 66°30' 55°00'