

THE EVENING TIMES-STAR, ST. JOHN, N.B., WEDNESDAY, DECEMBER 12, 1923

MUSEUM TO GET RARE SPECIMENS

Stuffed Animals From India Will Make Remarkable Collection

London, Nov. 20.—(By Mail)—The American Museum of Natural History will shortly become the possessor of an excellent collection of stuffed animals and zoological specimens from India, the fruits of the recent Verney-Panthe expedition. The expedition was undertaken by A. S. Verney, an Englishman, but for many years a resident of New York, and Colonel J. C. Panthe, with the object of forming a complete collection of animals from the plains of India. Later it was decided to present these to the American institution.

The collection is by far the most complete and varied that has ever been obtained. The hunting of the animals in this case was most exacting as only certain specimens were sought in order to mount the animals in groups in the American fashion. About 90 such groups of rare animals as tiger, spotted deer, rhinoceros, wild elephant, snakes and ants will be included in the presentation.

One of the most remarkable results of the expedition is a motion picture showing many rare pictures of the Indian animals in their native haunts and showing the progress and difficulties made in hunting them. The picture was made by an American photographer for use in connection with zoological classes of the museum.

CATHOLIC WOMEN'S LEAGUE MEETING

The members of the North End sub-division of the Catholic Women's League were the guests last night of the St. John sub-division at a general meeting held in the Knights of Columbus Hall with Mrs. John Owens, the president, in the chair. Miss M. H. McCloskey, president of the North End Society, was with Mrs. Owens on the platform. Rev. W. M. Duke gave the address of the evening and spoke of matters of vital importance to the C. W. L. His address was full of interest and was much appreciated. The reports of the standing committees for the months of October and November were given and were received with much satisfaction. During the evening two choruses were sung, "O Canada" and "Come Back to Erin." The meeting closed with the singing of a hymn.

HEAVY CHRISTMAS TRAIN IS ON WAY

Winnipeg, Dec. 12.—(Special)—One of the largest, if not the largest, special trains ever made up in Western Canada, left here yesterday for St. John with cabin and third class passengers for the Canadian Pacific steamships Montcalm and Melita. The train consisted of modern coaches, eight tourist cars, a standard sleeper and a compartment observation car, also a diner. The passengers comprise Old Country people, from the western provinces, who are returning to their former homes in time to spend Christmas with relatives and friends. They are all a fine type of people, who have settled in Canada and are prospering. The special train will run direct to the steamship lines' docks.

DEMANDS RELEASE OF MYSTERY SHIP

New York, Dec. 11.—The Dutch consul today demanded the release of the schooner Zeehond, of Dutch registry, which was seized last Friday by coast-guard off Fire Island Inlet with its cargo of \$250,000 worth of liquor. A legal representative of the consulate appeared before Henry H. Stewart, assistant collector of the port of New York, and declared that the Zeehond had not contemplated at attempt to clear the port. The liquor, he said, was consigned to Halifax.

KELLOGG TO GO TO COURT OF S. JAMES

Washington, Dec. 11.—After a contest in executive session, the nomination of Frank B. Kellogg, former United States Senator from Minnesota, to be ambassador to Great Britain was confirmed today by the Senate.

In Siam the eighth and fifteenth days of the moon are regarded as sacred, and devoted to worship and rest from ordinary labor.

The Star of Bethlehem

J. R. COLLINS
Formerly President, Astronomical Society of Canada.

Among Christian peoples having any astronomical knowledge, from the earliest times to the present day, the identity of the star in evidence at the nativity of Christ, has been a matter of much interesting speculation and controversy.

That secular contemporary history of the period fails to make any definite reference to it is not at all surprising when we remember that in our own day, when astronomical knowledge is so much more diffused among the people than it was two thousand years ago. The appearance of new stars and conspicuous conjunctions of the most brilliant planets and the appearing of many of the comets may be really seen and yet are totally ignored by most people, unless their attention is specially directed to them by some skilled observer who is sufficiently familiar with celestial objects to be able to recognize a new arrival or an unusual displacement.

Visit of the Magi.

That the Magi, the representative of the wisdom and learning of ancient Chaldea and Persia really appeared before the suspicious and jealous Herod, the Great—who is credited with having resorted to massacre and assassination to protect his interests, sparing not

even members of his own family—with the question "Where is He that is born King of the Jews? For we have seen His star in the East and have come to worship Him," and the subsequent result as related by St. Matthew, is attested by the historical fact of "The Day of Innocents," or "Christmas," a festival celebrated in the Latin Church on the 28th of December and the Greek Church on the 29th, in memory of the massacres of the children by Herod. The early church regarded these innocents as the first martyrs, as early as the second century of our era.

Some three centuries ago the celebrated astronomer Kepler, thought he could identify the star with a conjunction of the planets Jupiter and Saturn which astronomical reckoning indicated took place about the time of the birth of Christ.

New Stars.

At intervals "new stars" have been observed to blaze out suddenly with great light for a few days, and then for some as yet unknown reason rapidly disappear from ordinary vision. And again variable stars, some at short and some at long intervals of time, repeat the process of brightening up and fading. Many comets come and go unnoticed except by skilled observers, and

it has been suggested that some of these might answer for the star.

Points to Venus.

The planets Mercury, Jupiter, Saturn and Venus at times appear with extraordinary brilliance and impressiveness, Venus perhaps more so at times than any of the rest. Mercury is very brilliant but is only occasionally well seen on account of being so near the sun. Venus, sometimes as morning and again as evening star, often appears unusually bright but is never seen more than half way up to the zenith; when having attained that altitude and increasing her brightness, rapidly sinks

nearer the western horizon until she is lost in the glare of the sun's light. At the present time Venus is too near the sun to be readily observed, but a few weeks hence she will rise rapidly higher, and after a time recede.

If one takes pains to observe this beautiful sight, with the subject under discussion in mind, one can hardly refrain from wondering if this was not the star that may have guided the wise men of old towards Bethlehem. This will not seem so improbable when we remember that the Chaldean astronomers regarded a star, the moon or a comet as being "over" a place when it rose or set or passed the overhead

line, having a definite position in relation to the sun or the bright star Sirius, and being so determined for a local place somewhat resembling the manner of now determining the local time for any given place which we call "local time."

YARMOUTH MILLS IN COMBINATION

Boston, Dec. 11.—The stockholders of the International Cotton Mills today ratified the plan recently announced for merger of its mills at Lowell, Mass., Lisbon, Me., Yarmouth, N. S., and

Hamilton, Ont., with mills acquired by Lockwood, Green & Co., of this city, in Pelzer, S. C., Tuscan, S. C., Hogsheadville, Ga., and Lagrange, Ga. The combination will be called the New England Southern Mills.

A day in the planet Eros is five and one-half hours long.

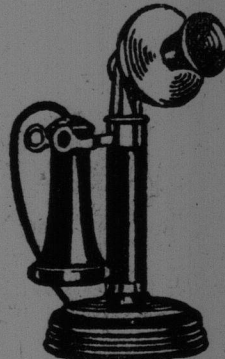
The Legacy "par excellence"

In addition to your insurance payable in a lump sum, you should own a Crown Life Monthly Income Policy, guaranteeing your Widow one certain cheque every month for as long as she lives. That is the legacy "par excellence." Telephone now M-839.

Branch Offices for Maritimes: Subway Block, Moncton N. A. Rogers, 5 First Street, St. John

C. P. Clark, Sussex J. B. Mullins, Bathurst
W. L. Wilson, Moncton B. R. Hooper (Sup't.) Moncton

CROWN LIFE
INSURANCE COMPANY



"SERVICE"

"Service is the bed-rock of business today—and service is personal. There is no way in which so much personal service can be rendered to so many people, as by Long Distance.

"The consumer and dealer look on advertising and Long Distance as the source of news of new styles and new prices. Long Distance ended the isolation of small towns. It enables them to keep the rapidly-growing small trade at home.

"The Smiths and Browns and Robinsons whose shipping trips to town were formerly planned weeks ahead, now buy advertised goods by Long Distance.

"It enables us to go after sales DIRECT. A letter is a good peddler or order-taker, but it rarely makes a sale. Only salesmen make sales, and they can make lots of them by Long Distance.

"Arrangements have been made to handle the extra Christmas traffic.

"We have the facilities to give you speedy and satisfactory service.

"Do not fail to take advantage of the use of Long Distance service for your Christmas business trade, your social calls and your Christmas greetings.

**The New Brunswick
Telephone Co., Ltd.**



Choose Your Phonograph

From the Largest Line
of Period Models

Made in Canada

JUST think of having no less than 25 different Period Models of the McLagan Phonograph from which to make your selection.

Everyone is a masterpiece—a representation of one of the famous Periods of furniture designing—such as Italian Renaissance, Louis XVI, Chippendale, Queen Anne, Sheraton, William and Mary, Adam, etc.

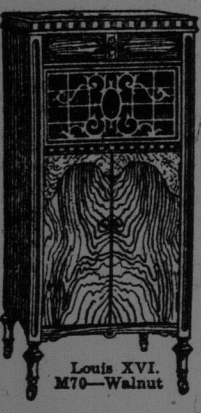
From this extensive line, you can readily select a model that will harmonize with the furnishings of your home, and which, at the same time, will be a beautiful decoration.

The McLagan is created to appeal both to the eye of the artist and the ear of the musician. It has the famous McLagan-Fletcher Reproducer and Tone Arm, the suspended wood Amplifier, and nine other distinctive features that make it a musical instrument of the highest class.

Ask the McLagan dealer about them. See the McLagan. Hear it play all makes of disc records.

The McLagan
"It Speaks for Itself" Phonograph

The McLagan Phonograph Corporation, Limited
Stratford - Canada

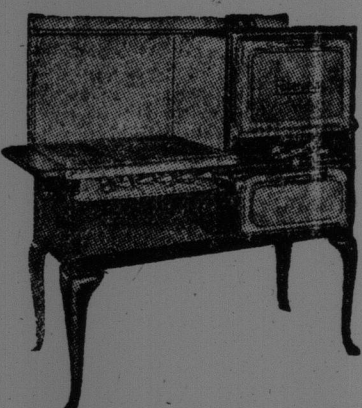


We Extend To All Our Our Patrons Our Heartiest Wishes
—for—
A Merry Xmas and a Happy and Prosperous New Year

In keeping with this Seasonal Holiday Spirit, we are happy to announce
A TEN PER CENT. REDUCTION IN THE PRICE OF GAS ON JANUARY 1st, 1924
THIS REDUCTION WILL BE WELCOMED BY ALL

The ECONOMY, EFFICIENCY and CONVENIENCE of GAS COOKING and HEATING are well known. No Kindling to prepare—No Ashes to clean out—A bright, hot flame instantly ready for use. We Invite the Public to visit our Showrooms, where we have on display a complete line of
GAS RANGES and GAS WATER HEATERS.

THE CHEAPEST
AND BEST

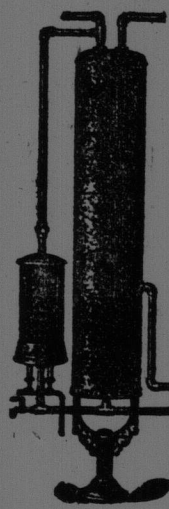


METHOD OF COOKING



HOT WATER QUICKLY AND
ECONOMICALLY

The Prices are Special, and Convenient terms can be arranged on small Monthly Payment basis.
A GAS RANGE OR HEATER IS THE IDEAL XMAS GIFT.
Take Advantage of the Reduced Rates and equip your Kitchen on our Special Monthly Terms.
We Welcome All Inquiries.



COSTS LESS
THAN ANY
OTHER
METHOD

'PHONE
M. 2430

NEW BRUNSWICK POWER COMPANY

Cor. Union and Dock Sts.