

1901

ers and timber limits. To get these will money, but it seems only common sense a government should know what it is selling away in a concession. Such expenses could form part of the price asked. Water powers as a rule require a large amount spent development, apart altogether from the mills. development of a power sometimes interferes with out, and transfer them to those who undertake in good faith to establish factories. In the case of water powers owned by the government, steps should be taken to settle the question of vested interests, right away, the going out of same also to form a charge on the property. A great many English firms considered properties in Canada, but when they make enquiries they invariably find that if they were to develop a power, they would flood the land; that if they were going to build a work suitable to that power, they find most

of the surrounding land held by different owners, who are simply waiting for the chance of exacting exorbitant prices for what has cost them with small invested interests, but it is unconceivable that these should be allowed seriously to retard the establishment of large industries! The Government should have power to buy these in little or nothing, and what is really of no value to them apart from the value given to it by other people. English paper makers have not time to spend in overcoming these difficulties; it simply makes purchase impossible. The Government should be in a position to say: Here is a water power; if you buy it we guarantee you all the land necessary for your works, free from claims from flooded land and other risks; our price is so much. This would prevent speculators dealing in properties and would encourage the legitimate capitalist to invest his money in the country, since he would start equipped with

the essentials necessary for success, namely, water power and timber, and a prospect of devoting his time and energy to the building up of a factory, and not, as has too often been the case hitherto, to counteracting the machinations of the crafty speculator or the wiles of the local landowners or option holder."

NEW PULP WOOD REGULATIONS.

It is announced that the Quebec Government has decided on a change in its stumpage dues on pulp wood. It will be remembered that last year the Government altered the rate. Up to that time it had been unconditionally 40 cents a cord. It was then changed to \$1.90 a cord, a condition of this rate being that \$1.50 per cord should be refunded on all pulp wood manufactured in the Province. The meaning of this was that pulp wood sent out of the province to be manufactured should bear an additional and discriminatory rate

JOSEPH H. WALLACE, C. E.
MILL AND HYDRAULIC ENGINEER
PULP AND PAPER MILLS.

WATER POWER DEVELOPMENTS

Plans, Examinations, Reports,
Preliminary Estimates, Plans,
Specifications, Consultation.

DREWSSEN COMPANY
CHEMISTS AND MILL EXPERTS
SULPHITE PULP MILLS.

Drewsen Acid System
Drewsen Reclaiming System
Richards-Drewsen Chip Separator
Herreshoff Pyrites Furnace

The above are associated in the furnishing of expert services for industrial development.

OFFICES: Temple Court Building, Beekman and Nassau Sts., NEW YORK. - WEBBWOOD, Ontario

HAS. H. VOGEL Mill Architect
and Engineer
THOROLD, ONT.
SPECIALTIES—PAPER, PULP AND SULPHITE PAPER
MILLS, ELECTRIC PLANTS, SURVEYS AND
IMPROVEMENTS OF WATER POWER.
Many years' practical experience. References on application.

DUNDAS AXES

made from the Best material by skilled workmen. Lumbermen can safely send them to the bush, knowing that they are finished to please the chopper and of a quality to stand the test in the severest weather.

DUNDAS AXE WORKS - DUNDAS, ONT.

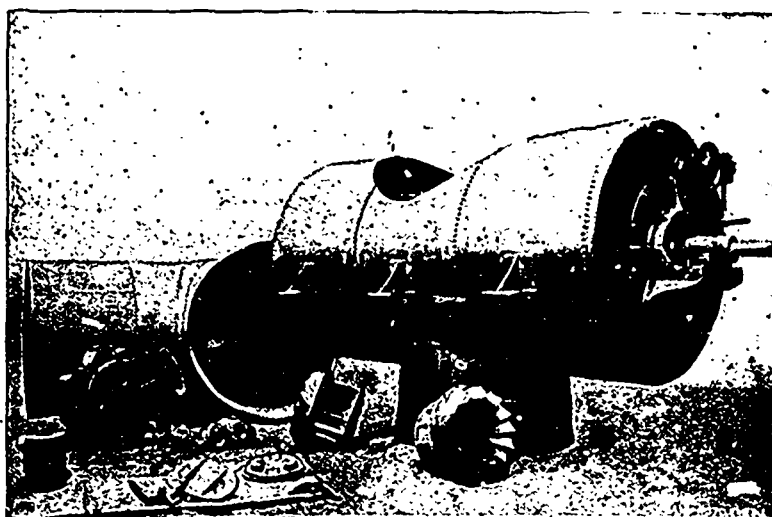
JOHN BERTRAM & SONS
DUNDAS, ONT.

MANUFACTURERS OF .

PAPER MACHINERY

Cylinder Moulds
Wet Machines

Cutters
Dryers



THE above view shows one of the many styles of setting and case to which our

CROCKER PATENT TURBINE

may be adapted This plant was built for direct connection to Wood Pulp Grinders.

We invite correspondence from those contemplating the erection of Ground Wood Mills. Estimates submitted for complete equipments.

Let us have your address and we will send you a copy of our new 1900 Turbine Catalogue, also circulars of the Port Henry Grinder, etc.

THE JENCKES MACHINE CO.

36-40 Lansdowne Street

SHERBROOKE, QUE

CORRESPONDENCE SOLICITED