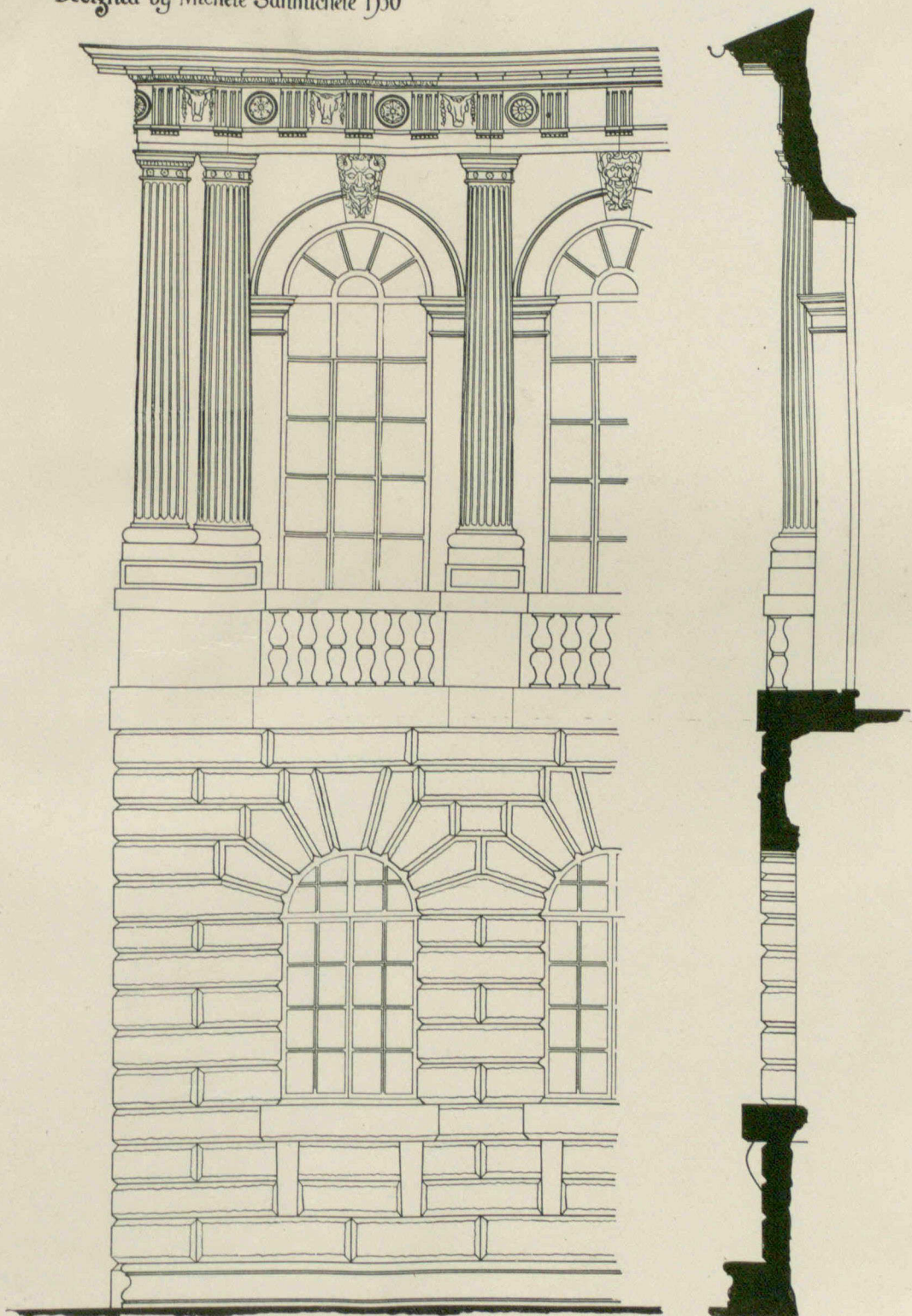


PALAZZO POMPEI, VERONA:  
Designed by Michele Sanmichele 1530



Elevation

Section

Scale 12 6 0 1 2 3 4 5 6 7 8 9 10 11 12 13 14 15 16 17 18 19 20 feet

Measured & Drawn  
Verona, October, 1900.  
Cecil S. Burgess.

PALACE POMPEII, VERONA.  
MEASURED AND DRAWN BY CECIL S. BURGESS.