

WHY THINK OF THE PAST?

BY A. MACFIE.

Why think of the past, and the many ways Pleasures enchanted my childhood days?

Why think of the past, and the many ways Pleasures enchanted my boyhood days?

Why think of the past, and the many ways Pleasures enchanted my youthful days?

Why think of the past, and the many ways Pleasures enchanted my manhood days?

Why think of the past with gladness or sighs, With a joyous heart or tears in my eyes?

OUR CHESS COLUMN.

Solutions to Problems sent in by Correspondents will be duly acknowledged.

TO CORRESPONDENTS.

J. W. S. Montreal.—Papers to hand. Many thanks. Student, Montreal.—Correct solution received of Problem No. 294.

CHESS NEWS

A congress of chessplayers was announced some time ago to be held at Graz at the beginning of September.

At the Brunswick Chess Congress the prize of the Problem Solution Tourney was won by the editor of the Leipzig Schachzeitung.

There appeared recently a long article in the Glasgow Weekly News on the laws regulating Tourney play.

We saw it stated, some weeks ago, that Mr. George Macfarlane had presented to the Glasgow Chess Club, of which he is President, a handsome set of ivory chessmen.

The Scottish chessplayers seem to be very liberal in providing valuable trophies to be contested for in their city clubs.

The Leipziger Illustrirte Zeitung, of Aug. 21, has a large full-page picture of the Wiesbaden Congress. It contains fifteen portraits, and is executed in the very best style.

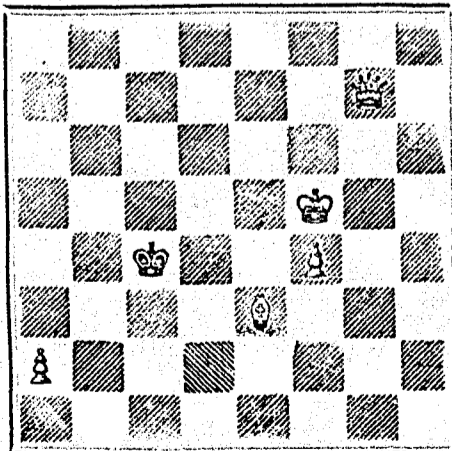
[An excellent copy of this picture appeared in the Canadian Illustrated News of Sept. 18, No. 12, vol. xxii. Editor C. C.]

From 3 to 4 o'clock in the afternoon each day M. Grécy, the President of the French Republic, faithful to an old habit, plays chess with a friend.

PROBLEM No. 296.

By G. H. Gwyn.

BLACK.



WHITE.

White to play and mate in three moves.

GAME 425TH.

Played in New York, some time ago, between Messrs. Mason and Barnes.

The termination is well worthy of notice.

Bishop's Gambit.

White.—(Mr. Mason.)

- 1. P to K 4
2. P to K B 4
3. B to B 4
4. K to B sq
5. Kt to Q B 3
6. P to Q 4
7. Kt to K B 3
8. P to K R 4
9. Kt to Q 5
10. K to Kt sq
11. Q to Q 3
12. P to R 5
13. Q to R 3
14. Q takes P (ch)
15. B to Q 2
16. K to R 2
17. Kt takes B
18. Q to R 3
19. P to Kt 3
20. K R to K sq
21. B to K 3
22. Q R to Q sq
23. R takes Q P

Black.—(Mr. Barnes.)

- 1. P to K 4
2. P takes P
3. Q to R 5 (ch)
4. P to K Kt 4
5. B to Kt 2
6. P to Q 3
7. Q to R 4
8. P to K R 3
9. K to Q sq
10. Q to Kt 3
11. P to Q B 3
12. Q to R 2
13. Q takes P
14. Kt to Q 2
15. B takes P (ch)
16. B to K 4
17. Q takes Kt
18. P to B 6 (dis. ch)
19. P takes Kt
20. Q to Q 5
21. Q takes K B
22. Q to K R 5
23. Kt to K B 3

and White mates in four moves.

SOLUTIONS.

Solution of Problem No. 294.

- White. 1. Kt to K B 5
2. B takes acc.
Black. 1. Any move

Solution of Problem for Young Players No. 292.

- WHITE. 1. Kt to Q Kt 4
2. P to Q R 4
3. K to Q B 2
4. K to Q B sq
5. Kt mates
BLACK. 1. P to Q Kt 4
2. P takes P
3. P to Q R 6
4. P to Q R 7

PROBLEM FOR YOUNG PLAYERS, No. 293.

- White. K at K R sq
Bat K 2
Kt at K 7
Kt at Q 8
Black. K at K 5
Pawns at K 4 and 6 and Q 4

White to play and mate in three moves.

BE YE LIKE FOOLISH.

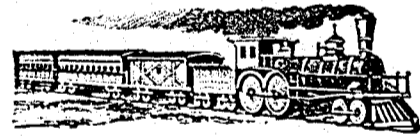
"For ten years my wife was confined to her bed with such a complication of ailments that no doctor could tell what was the matter or cure her, and I used up a small fortune in humbug stuff.

1000 AGENTS WANTED for Visiting Cards, Books, and Novelties. Outfit 3c. Big Profits. 50 gilt edge cards, in case, 35c. Detective's Club, 30c. Bird Call, 15c. A. W. KINNEY, Yarmouth, N.S.

\$5 to \$20 per day at home. Samples worth \$5 free. Address STINSON & Co., Portland, Maine.

\$66 a week in your own town. Terms and \$5 outfit free. Address H. HALLETT & Co., Portland, Maine.

\$72 A WEEK, \$12 a day at home easily made. Costly Outfit free. Address TRUE & Co., Augusta, Maine.



C. M. O. AND O. RAILWAY.

Change of Time.

COMMENCING ON

Wednesday, June 23, 1880.

Trains will run as follows:

Table with columns: MIXED, MAIL, EXPRESS. Rows include: Leave Hochelaga for Hull, Arrive at Hull, Leave Hull for Hochelaga, Leave Hochelaga for Quebec, Arrive at Quebec, Leave Quebec for Hochelaga, Arrive at Hochelaga, Leave Hochelaga for St. Jerome, Arrive at St. Jerome, Leave St. Jerome for Hochelaga, Arrive at Hochelaga.

(Local trains between Hull and Aylmer.) Trains leave Mile-End Station Seven Minutes Later. Magnificent Palace Cars on all Passenger Trains, and Elegant Sleeping Cars on Night Trains.

GENERAL OFFICE, 13 Place d'Armes Square. TICKET OFFICES, 13 Place D'Armes, and 202 St. James Street, Montreal. Opposite ST. LOUIS HOTEL, Quebec. L. A. SENEGAL, Gen'l Sup't.

LIEBIG COMPANY'S EXTRACT OF MEAT. FINEST AND CHEAPEST MEAT-FLAVOURING STOCK FOR SOUPS, MADE DISHES & SAUCES. Includes logo and descriptive text.

THE BEST REMEDY FOR INDIGESTION. NORTON'S PILLS. Includes logo of a pill bottle and text describing the medicine's benefits.

THE BURLAND LITHOGRAPHIC COMPANY (LIMITED). CAPITAL \$200,000. GENERAL Engravers, Lithographers, Printers AND PUBLISHERS, 3, 5, 7, 9 & 11 BLEURY STREET, MONTREAL.

THIS ESTABLISHMENT has a capital equal to all the other Lithographic firms in the country, and is the largest and most complete Establishment of the kind in the Dominion of Canada.

The Scientific Canadian MECHANICS' MAGAZINE AND PATENT OFFICE RECORD. A MONTHLY JOURNAL. Devoted to the advancement and diffusion of Practical Science, and the Education of Mechanics.

British American BANK NOTE COMPANY, MONTREAL. Capital \$100,000. General Engravers & Printers. Bank Notes, Bonds, Postage, Bill & Law Stamps, Revenue Stamps, Bills of Exchange, DRAFTS, DEPOSIT RECEIPTS, Promissory Notes, &c., &c., Executed in the Best Style of Steel Plate Engraving.

THE COOK'S FRIEND BAKING POWDER. Has become a HOUSEHOLD WORD in the land, and is a HOUSEHOLD NECESSITY. Includes logo and text about its benefits for baking.