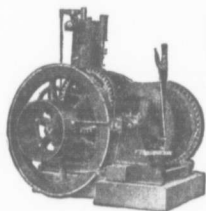


FAIRBANKS-MORSE Gasoline Hoisting Engines

THE IDEAL MINE HOIST

The Cheapest and
Most Satisfactory Power for
Mine Hoisting.
Can be started and stopped
instantly.



Consumes fuel in proportion to
the load, and only when it is in
operation. Engine can be de-
tached and used for many pur-
poses, such as sawing wood
pumping Water, etc.

WRITE FOR CATALOGUE.

The Canadian Fairbanks Co., Ltd.

MONTREAL.

TORONTO.

WINNIPEG

VANCOUVER.

CHAINS. CHAINS.

(All Sizes in Stock.)

"EDGES" BEST SPECIAL CRANE CHAINS.

Cannot be Excelled for **HIGH CLASS QUALITY** and **WORKMANSHIP**
They are made of the very best brands of English Bar Iron and by Selected Workmen.

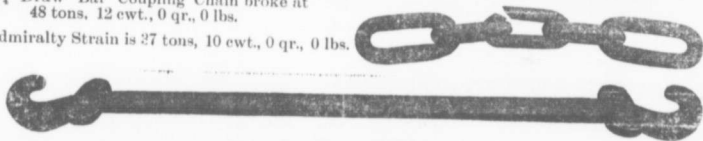
Makers of every description of Chains
for Mining and all Engineering Purposes.

Coupling Chains and Solid Forged Draw Bars

For Mine Cars, A SPECIALTY.

This 1 1/2" Draw Bar Coupling Chain broke at
48 tons, 12 cwt., 0 qr., 0 lbs.

The Admiralty Strain is 27 tons, 10 cwt., 0 qr., 0 lbs.



Draw Bar for Coal Car.

Edge & Sons, Limited,
SHIFNAL, England:

Tel. address "Edge" Shifnal.
"Codes" A. B. C. and Bedford McNeills"