

marks; wings hyaline with scanty brown spots including three along the costa; cross-vein *r* at the tip of *R*<sub>1</sub>.

*Male*.—Length about 6 mm.; wing, 7.1 mm.

Rostrum yellowish, the basal segments of the palpi light brown, the apical segments dark brown. Antennæ with the basal segment brown, the remainder of the antennæ dull yellow. Head brown with a thick light grey bloom.

Thoracic dorsum light yellow, the præscutum with four black marks, a pair on either side of the middle line about midlength of the sclerite, contiguous on their inner faces; a larger mark on the sides of the sclerite near the end of the suture; scutum with a very large rounded mark on each lobe; scutellum with the caudal margin narrowly brown; postnotum with two pale brown rounded markings behind, one on either side of the median line, but separated from one another. Pleuræ yellowish white. Halteres pale, knob a little darker. Legs with the coxæ and trochanters pale yellow,

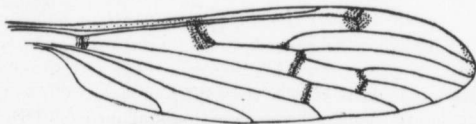


Fig. 10.—*Libnotes picta*.

femora light yellow, the tip narrowly dark brown; tibiæ dull yellow, the tip narrowly dark brown, tarsal segments 1 and 2 dull yellow, the tips narrowly darker, segments 3 to 5 brown. Wings hyaline with small brown marks as follows: a large rectangular blotch at the origin of *Rs*, a rounded stigmal spot, narrow seams along the cord and along the outer end of cell 1st *M*<sub>2</sub>, the tip of the wing is narrowly infuscated, base of the wing in the vicinity of the arculus clouded with brown; veins yellow, brown inside the markings on the membrane. Venation as in figure.

Abdomen dull light yellow.

*Habitat*.—Island of Guam, Ladrões.

*Holotype*, ♂, Guam, Ladrões, D. T. Fulloway, coll. No. 1226.

By means of Osten Sacken's key to the species of this genus (Berl. Ent. Zeit., Vol. XXXI, pt. 2, p. 182, 183), *L. picta* would