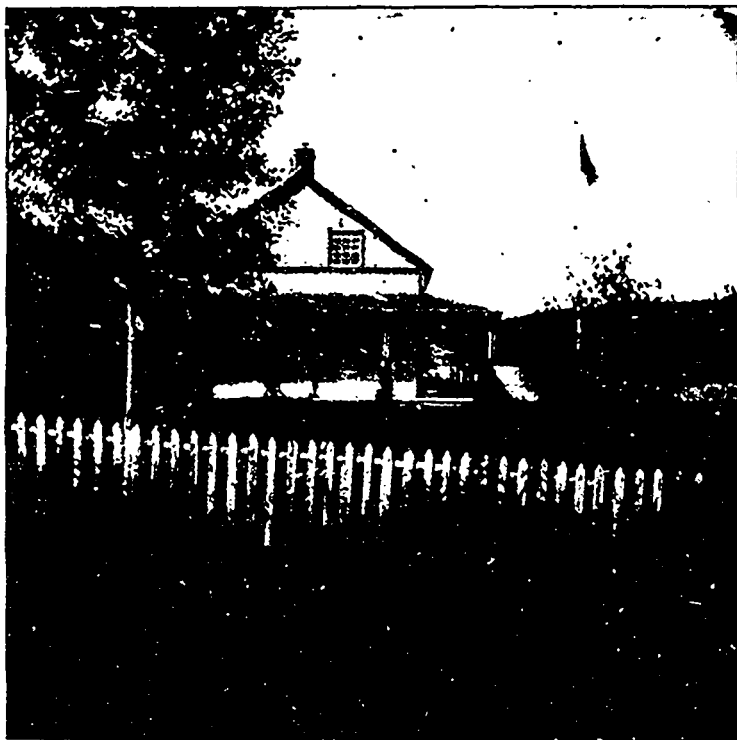


H. B. Company's Nepigon Post



This "fort" is on Nepigon Lake, about 60 miles from the mouth of the river.

Have you wet a fly in the Nepigon? If not, listen to what General McNulta, U.S.A., says: "Having tested, by practical experience, some one or more of the head waters of every principal stream on both the Atlantic and Pacific slopes, from the most northerly settled limits along the Canadian Pacific line, to the most southerly point in Mexico, where trout are found, together with a test of most of the principal streams in Scotland and Ireland, I am still of the opinion that the Nepigon, from the standpoint of the high-typed sports-man, is the finest trout stream in the world."

The Nepigon has long been termed "the king of trout streams," and as civilization advances, and the older trout streams are practically fished out, we find the Nepigon still holding its own, and producing fish which would make any angler envious of the fortunate one who had selected it for his outing. Five-pounders are common, and there is a record of one weighing eight pounds two ounces, caught by Eugene Stevenson, of Paterson, N. J., in August, '95; numbers of doubles are caught, the largest by E. P. Williams, of Cleveland, O., on August 28th, '95, with a six-ounce rod, one weighing 6½ pounds, the other 4¾ pounds, in the aggregate 11½ pounds. Many other records worthy of a first place, cannot, of course, be published here.

Lake Nepigon, the fountain-head, the producer of the brook trout for which this stream is justly famous, is also the home of the whitefish and lake trout, some of the latter having been caught with the rod weighing from 30 to 40 pounds. The lake is beautiful, being studded with numerous islands offering pleasant camping places, and many tourists who visit the Nepigon spend some time on the lake, which can be safely traversed in the large bark canoes used on the river. The climate here is particularly enjoyable: the delicious coolness of the air has wonderful recuperative powers, and refreshing sleep under warm blankets is the lot of all.

Nepigon station is on the main line of the CANADIAN PACIFIC RAILWAY, 65 miles east of Port Arthur and 929 miles west of Montreal.

Anglers may obtain all necessary information by applying to any officer or agent of the

CANADIAN PACIFIC RAILWAY

or to the General Passenger Department, Montreal, Que.