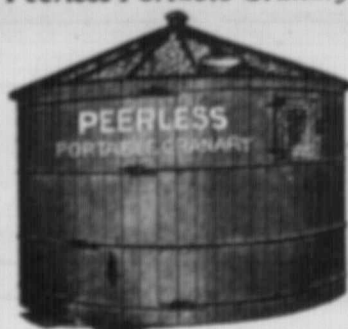


FOR REAL SERVICE CONSIGN YOUR  
**Wheat - Oats - Barley - Flax - Rye**  
 NOTIFY  
**James Richardson & Sons Limited**  
*The Old Reliable Grain Commission Merchants*  
 Established 1857. Write or wire nearest Western Office.  
**WINNIPEG CALGARY SASKATOON**

**Rye Growers!**  
 It will pay you  
 to ship to us.  
 GIVE US A TRIAL  
**B. B. Rye Flour Mills**  
 Winnipeg LIMITED  
 WHEN WRITING TO ADVERTISERS  
 PLEASE MENTION THE GUIDE

**Licensed and Bonded**  
 EACH of the grain companies whose  
 advertisement appears on this page  
 is licensed by the Canada Grain Com-  
 mission to handle consignments of  
 grain from farmers on commission.  
 Each company is also bonded in ac-  
 cordance with the terms of the Can-  
 ada Grain Act, to a sufficient amount  
 which, in the opinion of the Canada  
 Grain Commission, will ensure the full  
 and prompt payment for all grain  
 shipped to them by farmers. No grain  
 dealers' advertisements are published  
 in The Guide except those licensed and  
 bonded according to the above pro-  
 visions.  
**THE GRAIN GROWERS' GUIDE**

**Peerless Portable Granary**  
  
 BUILT like a water tank. Sides made of  
 2x8 tongue and groove staves, rabbeted  
 to fit. Bottom, which is 2 inches thick,  
 grooved and fitted with slip tongue  
 bolts on skids. Four half inch round  
 steel bands hold the body together.  
 Roof is made with angle steel rafters  
 entered with galvanized steel. Hole in  
 top to take mouth of threshing. Handy  
 door to get grain out. Built for service  
 throughout and guaranteed to please.  
 Shipped in the flat. Price \$160, including  
 skids, bottom and everything ready to  
 erect. Can be set up in a few hours.  
 Implement Dealers wanted as Agents.  
 Write  
**The Brett Manufacturing Co. Ltd.**  
 WINNIPEG MAN.

**Weekly War Summary**

THE fifth year of the war began  
 last Sunday. It found the Ger-  
 man armies that had been driving  
 back with such immense losses  
 of men, material and ground,  
 beginning to offer more effective re-  
 sistance to the further advance of  
 the Allies along the banks of the Aisne  
 and Vesle rivers, after the great Ger-  
 man attempt to rush down the valley  
 of the Marne upon Paris in overwhelm-  
 ing might had been beaten back so  
 effectually that the Germans found  
 themselves faced with the likelihood of  
 being driven back to the line held in  
 March last, before that offensive be-  
 gan, if not still further back. The  
 immense losses inflicted upon the Ger-  
 mans in the beating back of that ter-  
 rible offensive are of essential im-  
 portance and value when considered in  
 connection with the great increase of  
 men and material with which the Allies  
 enter upon the fifth year of the strug-  
 gle, by reason of the already very large  
 and constantly augmenting accession  
 of strength from the United States in  
 man-power as in other power for the  
 prosecution of the war. Since the first  
 great German defeat in the valley of  
 the Marne in September, 1914, the se-  
 cond month of the war, the Germans  
 have never massed such strength or  
 used it with such elaborateness of or-  
 ganization and such thoroughness of  
 preparation as in their offensive of  
 this year, which the strategy of the  
 Allied high command and the valor of  
 the Allied armies turned into a German  
 failure, whose magnitude is rightly to  
 be estimated by weighing the German  
 effectiveness in men and material as  
 they were when everything was ready  
 for the launching of that great drive  
 and as they are now, in comparison  
 with the constant and rapid increase of  
 the Allied strength. While such esti-  
 mating and such comparisons must, of  
 course, be in a considerable measure  
 conjectural, there is good ground for  
 firm belief that the scales are being  
 steadily weighted in favor of the  
 Allied strength, while at the same time  
 the result of the past five months' op-  
 erations on the West front has fur-  
 nished brilliant and convincing proof of  
 the superiority of the Allied general-  
 ship. In this respect the actual events  
 speak loudly for themselves; and in  
 striking addition, the labored attempts  
 from Berlin to explain away their sig-  
 nificance speak volumes. In conjunc-  
 tion with the hopes for success of the  
 great offensive along the Marne, it is  
 plain beyond doubt or question that  
 the strategy of the German high com-  
 mand had planned to launch another  
 great drive towards the channel ports.  
 This drive was to have been under the  
 direction of Crown Prince Rupprecht,  
 of Bavaria, who is in command of the  
 German line opposing the British under  
 Field-Marshal Sir Douglas Haig. Prince  
 Rupprecht, however, was compelled  
 during the early stages of the Allied  
 offensive on the Soissons-Rheims sec-  
 tor to send large numbers of his men  
 to the aid of his cousin, the German  
 Crown Prince; while there is every  
 reason for confidence that Field-Mar-  
 shal Haig's strength has not lessened.  
 On the whole, the fifth year of the  
 war began with affairs in such a po-  
 sition, not only on the west front but  
 on every other front, as to give ground  
 for increased determination in the re-  
 sponse of the world's free peoples to  
 the message from the British Premier  
 last Sunday: "Hold fast!"

Office of the  
 Editor  
 There is a  
 special expert without  
 agents routine ser-  
 vices improvements  
 superior for all  
 BURLY—There  
 offerings in this  
 American prices are  
 \$1.15 prices have  
 your demand for each  
**WINNIPEG**  
 July 31  
 1918  
 Oct. 322 82 532  
 Dec. 361 77 791  
 Feb. 400 68 844  
 Oct. 448 448 444

**THE CANADIAN MESSAGE**  
 CORN—Continued  
 the last few days. No  
 to \$1.57. No. 4 \$1.52 to  
 OATS—No. 4 \$1.05 to  
 sales were at 71, 71 1/2,  
 71 to 72. No. 4 white  
 RYE—Narrow and  
 closed at \$1.84 to \$1.86  
 BARLEY—Almond  
 \$1 to \$1.04 for new batch  
 closed at 92 to \$1.09  
 FLAX—No. 1—Only  
 buyers paid for over 40  
 at \$4.35 to \$4.38, on op-

**INTERIOR TERMINA**  
 Movement of grain in  
 for the week ending  
 as follows:

Ex- cise	Grain	Re- g'd dis- trib
Wheat	3,940	
Oats		
Barley		
Flax		

**NEW WHEAT**  
 Minneapolis, Aug. 3  
 one from Minnesota &  
 Dakota, were received.  
 A few movements of  
 in the near future. It  
 throughout southern M.  
 It is reasonable to believe  
 as rapidly as possible,  
 that is now being off  
 price.  
 For new spring whe-  
 and \$2.31, respectively  
 northern and southern.  
 In a day less for over  
 the government price  
 \$1.25 was bid.  
 One of the big mills

**FIXED**

	1'	2'	3'
Fixed	221	218	215
Year ago	240	237	232

**Cash**

Date	Wheat	Feed	2 C
July 30	185	96	
31	185	96	
Aug 1	185	96	
2	185	96	
3	185	96	
4	C	1	
Week ago	185	96	
Year ago	164	76	

**LIVESTOCK**

**Cattle**  
 Choice steers  
 Best butcher steers  
 Fair to good butcher  
 Good to choice fat cows  
 Medium to good cows  
 Canners  
 Good to choice heifers  
 Fair to good heifers  
 Best open  
 Best butcher bulls  
 Common to be-guns  
 Fair to good feeder  
 Fair to good stocker  
 Best milkers and spe-  
 cial  
 Fair milkers and spe-  
 cial

**Hogs**  
 Choice hogs, fed  
 Watered  
 Light hogs  
 Sows  
 Pigs  
**Sheep and Lambs**  
 Choice lambs  
 Best killing sheep

**WALLIS**  
**POWER--SPEED--DURABILITY**

A tractor should be judged not only by how many plows it pulls, but how fast it pulls them day after day. It is just as wasteful to plow too slowly and waste time as it is to plow too fast and rack the tractor and plows to pieces.  
 This new type Wallis pulls three 14-inch bottoms, six to eight inches deep at the rate of two and a half miles per hour.  
 This means 10 3/5 acres per ten-hour day, which is equal to the work of ten good horses. The average tractor is designed to pull the same load at the rate of 1 1/2 miles per hour, or 7 3/5 acres per day. Thus the Wallis does practically 50 per cent. more work in the same time. This is a factor of vital importance, especially when plowing season is cut short by weather conditions.

and strongest known to mechanics. It is typical of Wallis simplicity and strength. On pages 24 and 25 of our new catalog this advanced type of construction is clearly illustrated and explained. It will pay you well to read it.

**Multiplied Power**

The advanced type Wallis, because of a simplified design, weighs just a little more than 3,000 pounds. It saves, according to a recently published Tractor Directory, from 1,500 to 2,000 pounds of weight, as compared with other tractors designed to do the same work. Experts know that in the average tractor 40% to 50% of the power generated by the motor is required to propel its own weight. Plainly, every added pound of unnecessary weight is paid for in loss of draw-bar power. In the Wallis, due to its light weight, the power usually required by the average tractor to move this light weight, is turned into draw-bar pull, increased speed, and more work done. The Hyatt Roller Bearing Company's tests prove that the Wallis delivers to the draw-bar ready for work 74% of the power developed by the motor.

**Economy—Determined by Work Done**

The amount of work a tractor will do for you determines its economy. Purchase price alone bears no direct relation to the cost. True value can only be determined by work done over a period of years.  
 The Wallis Tractor will give you the greatest returns for your money because, with reasonable care, it will do the greatest amount of work in the shortest time, and will last the longest. This service comes from the advanced type of Wallis design, which combines power, speed, light weight and durability for the first time. This is one of the greatest accomplishments of the Wallis ideal.

This means that from every gallon of fuel the Wallis user gets practically 50% more power.

In the Wallis all gears are drop forged, cut and hardened. The materials are the finest. Besides being carefully finished, they are enclosed in dust-proof cases, and move in a continual bath of clean oil, furnished by our positive oiling system. Tough cast gears, according to experts, absorb 25% to 30% of the engine power.

**Rewards of Leadership**

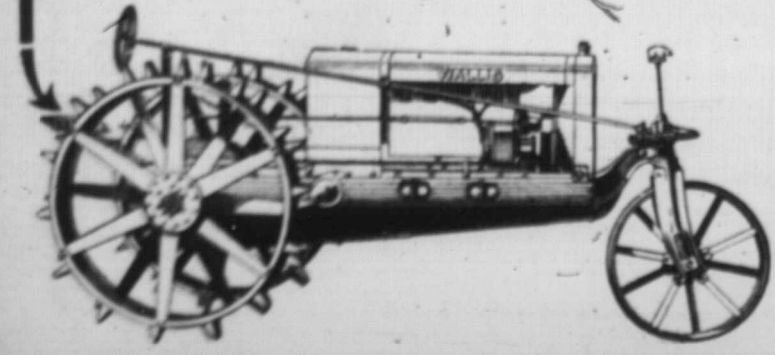
Today the Wallis Tractor is conceded by all to be the most advanced type of tractor. Efficiency of the excellent design and construction of this machine, has been proved by the service which Wallis Tractors are to-day giving their owners in the United States, England, France and Italy.  
 Years from now other Tractors will follow our lead, but right now Wallis owners are reaping wonderful rewards from this tractor years ahead of its time.

**Light Weight—A Vital Factor**

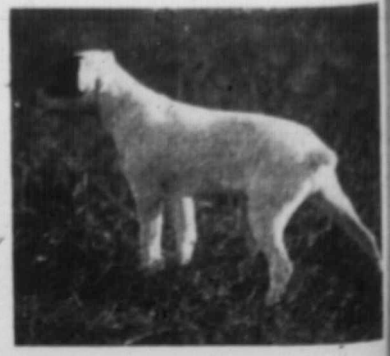
Simplified design, excellence of materials and most expert workmanship are responsible for this light weight which produces remarkable durability and power. As one indication of where a lot of unnecessary weight is saved look at the exclusive Wallis frame design.  
 This member is made of boiler plate, rolled into a "U" shape. It serves the four-fold purpose of frame, bottom of crank case, transmission case, and rear axle housing. This method of building eliminates all heavy "I" beams, braces and counter-braces and with them a tremendous lot of useless weight. This "U" shape construction is the lightest

**An Unusual Catalog**

Our catalog illustrates in detail every part of mechanism of this advanced type of machine. It will give you a standard by which to judge all tractors. We will send you a copy on request.



**The Canadian Fairbanks-Morse Co. LIMITED**  
 Saskatoon WINNIPEG Calgary



On the Watch.