

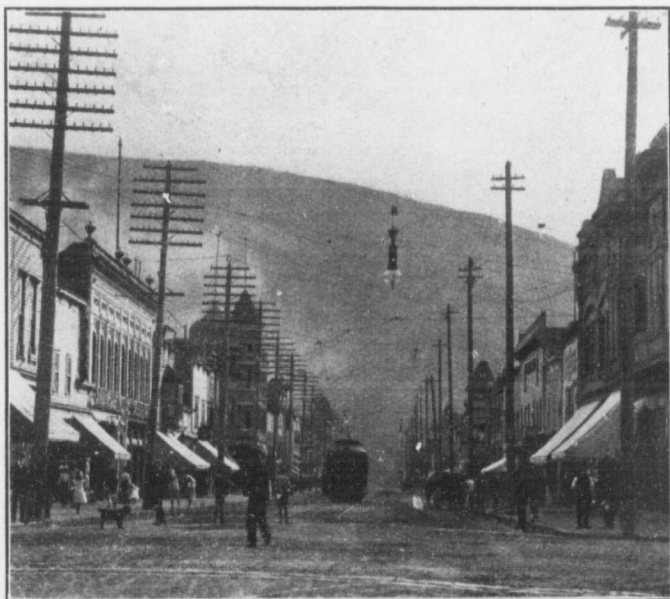
NWP
971.31
N 4329i

GLORIOUS KOOTENAY

LOCATION AND DESCRIPTION OF THE KOOTENAY



HE Kootenay District is the Southeastern portion of the Province of British Columbia, and is traversed by that portion of the Canadian Pacific Railway Company's system known as the "Crow's Nest Pass Route." This line of railway, which diverges from the main line of travel between Montreal and Vancouver at Medicine Hat, and rejoins it again at Revelstoke, forms a pleasing variation of route for those who are visiting the Pacific Coast. The Canadian Pacific Railway Company gives through travellers the privilege of going or returning by this route.



View of Baker St., Nelson