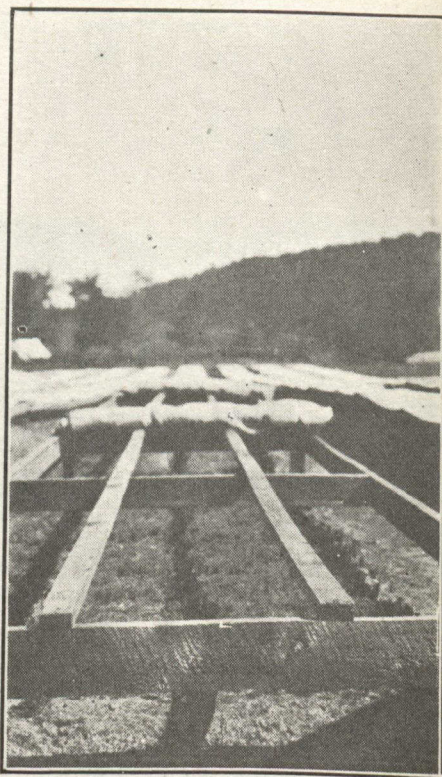


will be bundled and shipped to the plantation in lots of required quantity to keep a small reserve always ahead of the plantation crew. This will eliminate a prolonged "heeling in" period between the time the plants are removed from cellar and the time at which they are permanently planted. By means of the system of digging out two year seedlings and three year transplants in the Fall, the work will be distributed over the season, rather than being crowded into a short period in the spring.

The foregoing outlines the policy upon which the nursery is being developed. The result so far obtained includes a stock of about 2,000,000 one-year-old Norway spruce seedlings 800,000 one-year native white spruce seedlings, 200,000 one-year native white pine seedlings, 75,000 three-year Norway spruce transplants, 100,000 four-year Norway spruce transplants, 5,000 five-year twice transplanted white spruce and white pine, and about 5,000 two-year seedlings of bull pine, or a total of about 3,185,000 plants of all classes.



Showing Manner in Which the Shade Frames are Constructed and Used.

Exaggeration of Canada's Wood Supply

Mr. Phillip T. Dodge of the International Paper Company, is reported in the New York Times as saying: "Most serious is the matter of pulp wood, from which paper is made. The forests of the United States are in great measure exhausted but in Canada there is a vast supply, largely on Crown Lands. For years this came freely to the United States, being cut under extensive leases, but exportation from the important sections is now prohibited and the mills of this country are placed at a great disadvantage. If the wood supply for the making of paper is practically exhausted in the United States, how long does anyone think it will take to place Canada in the

same position if all the American mills are allowed free access to her supplies? The uses of wood pulp are rapidly increasing, the consumption of paper is not likely to diminish and while Canada has a large supply it is by no means 'vast'."

PLANTING ON THE PRAIRIES

Last year on the 160 acre forest tree nursery of the Dominion Forestry Branch at Sutherland, near Saskatoon, one half million trees were shipped to farmers in the province. Two years ago three million were shipped out. The trees are taken up in the fall and set out in the spring.