

CHIESS.

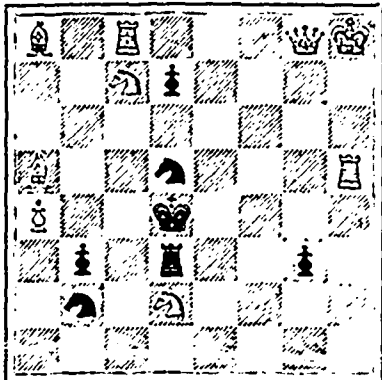
Solutions of Problems Nos. 36 and 37—B to R2 and K to B7. Solved by C. W. L.

PROBLEM No. 36.

By Max Frigl.

From Illustrated London News.

BLACK 7 pieces.



WHITE 9 pieces.

White to play and mate in 2 moves

BLACKBURNE—LEE MATCH.

GAME No. 39.

Tenth game of the match. played August 11th. 1890.

ZUKERTORT'S OPENING.

WHITE BLACK.

- | | |
|----------------|-----------------|
| Mr. Lee. | Mr. Blackburne. |
| 1 Kt to K B3 | P to Q4 |
| 2 P to Q4 | B to Kt5 |
| 3 Kt to K5 a | B to B4 |
| 4 P to Q B4 | P to K B3 |
| 5 Kt to K B3 b | P to B3 |
| 6 P takes P | P takes P |
| 7 Kt to B3 | P to K3 |
| 8 Q to Kt3 | Q to Q2 |
| 9 Kt to K R4 c | B to K Kt5 |
| 10 P to K3 | Kt to B3 |
| 11 P to Q R3 | R to B sq |
| 12 B to Q2 | B to Q3 |
| 13 Kt to R4 | K Kt to K2 |
| 14 P to R3 | B to R4 |
| 15 P to K4 | B to B2 |
| 16 Kt to KB3 | Castles |
| 17 Kt to B5 | B takes Kt |
| 18 P takes B c | P to K4 |
| 19 Q to R4 | B to K sq |
| 20 R to B sq | P to K5 |
| 21 Kt to Kt sq | P to B4 f |
| 22 B to K2 | Q to K3 |
| 23 P to Kt4 g | Kt to K4! h |
| 24 Q to Q sq | P takes P |
| 25 P takes P | Q takes P i |
| 26 B to QB3 | Q to Kt7 |
| 27 B takes Kt | Q takes R |
| 28 K to B sq | B to Q2 |
| 29 P to B3 | B to R6 ch |

Resigns. (2 hours) (1 hour 40 min.)

NOTES.

By Gunsberg.

- a A departure from the usual move adopted in another game.
- b It seems doubtful whether White has gained anything by this third move
- c Kt to R fourth is seldom good, generally speaking.
- d An advance under unfavourable auspices.
- e This works out unfavourably for White. Black obtains a strong centre.
- f The sudden way in which Blackburne will get up an attack forms the principal charm of his play.
- g Never remain in line of fire of a masked battery.
- h Carrying out a very fine idea conceived in his nineteenth move.
- i The climax! If 25 B takes Q, Black mates in two moves.—Gazette.

DRAUGHTS-CHECKERS

"AVARD," Chemogue, N.B.—Your favor of the 16th instant is received with thanks. We are happy to have you come into our band of checkerists. There are no conditions attached to joining. Mr. Hamilton, one of our best players, is not a "hook" player, so that you need not fear to enter on that score. Will give you in next week's issue a partial list of the latest and best checker books that we can recommend. Your solution to Problem 184 is excellent, and we produce it below.

MESSES. FORBES AND LYNCH St. John's. We would like you to play to draw in Game 69 by 17-13 instead of 17-11. Your criticism on Game 70, that at the 31st move, position being black men 3, 5, 9, 12, 13, 19; white men 14, 18, 21, 27, 28, 31; who to play, is quite correct. As you say the white moved 31-20 instead of 14-10 he would have captured a man and won quite easily. We would be pleased to see the next draw mentioned in your criticism of Problem 181.

SOLUTION.

PROBLEM 184, by "Avarl," Chemogue, N.B.—The position was:—black men 1, 6, 10, 12, 14, king 31; white men 11, 17, 19, 21, 24, 28; white to play and win:—
11-7 27-20 23-19 10-17
14-18 1-9 14-15-24 21-14
7-2 20-24 28-19 white
31-27 14-23 1-5 wins.
2-9 24-15 17-14

VAR. 1, by A. S. McKay.
9-6 6-15 17-11 15-18
18-22 20-16 16-23 w. wins.

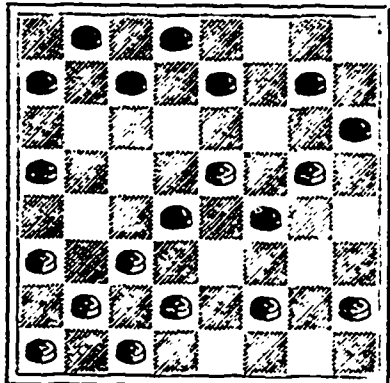
GAME No 72.—"Cross."

Bring the seventh game in the late match at Brisbane, Queensland, between champions Wylie and Marr.
11-15 14-23 9-13 4-8
23-18 19-10 24-20 20-16
8-11 7-14 16-19 *3-7
27-23 26-19 32-27
10-14 11-16 14-18
23-19 19-15 31-26

* This brings us to the following position which we present as

PROBLEM No. 186.

Black men (Wylie) 1, 2, 5, 6, 7, 8, 12, 13, 18, 19.



White men (Marr) 15, 16, 21, 22, 25, 26, 27, 28, 29, 30.

London Rubber Stamp Mfg Co.

Rubber and Metal Stamps, Notarial Seals, Hectograph Copying Pads, Stencil Cutters, &c. 223 HOLLIS ST., Halifax.

I took Cold,
I took Sick,
I took
SCOTT'S EMULSION
I take My Meals,
I take My Rest,
AND I AM ABLE TO ENJOY MYSELF IN ANYTHING I WANT TO TAKE ON; getting fat too, for Scott's Emulsion of Pure Cod Liver Oil and Hypophosphites of Lime and Soda has cured my Incurable Consumption and I can now breathe freely.

FLESH ON MY BONES

BRITISH AMERICAN HOTEL.

Within Two Minutes Walk of Post Office.
DUNCAN BROUSSARD, - Proprietor,
HALIFAX, N. S.

ICI ON PARLE FRANCAISE.
THE MOST CENTRAL HOTEL IN THE CITY

ALBION HOTEL
JAMES GRANT, Proprietor.
22 SACKVILLE ST., HALIFAX.

LYONS' HOTEL,

Opp. Railway Depot.
KENTVILLE, N. S.
DANIEL McLEOD, - Prop'r.

New Victoria Hotel,
248 to 252 Prince William St., St. John, N. B.
J. L. McCOSKERY, Proprietor.
One minute's walk from Steamboat Landing.
Street cars for and from all Railway Stations and Steamboat Landings pass this Hotel every five minutes.

For Coughs and Colds,
Catarrh, Influenza,
Bronchitis, Asthma,
Consumption, Scrofulous
and all Wasting Diseases,
USE
PUTTNER'S EMULSION
of COD LIVER OIL,
WITH
HYPOPHOSPHITES OF LIME AND SODA.

For all diseases of the NERVOUS SYSTEM, as MENTAL ANXIETY, GENERAL DEBILITY, IMPROVERISHED BLOOD, Etc., it is highly recommended by the Medical Profession.
St. Andrews, N. B., 4th Oct., 1889.
Messrs. Brown, Broon, & Co.
Being very much reduced by sickness and almost given up for a dead man, I commenced taking your PUTTNER'S EMULSION. After taking it a very short time my health began to improve, and the longer I used it the better my health became. After being laid aside for nearly a year, I last summer performed the hardest summer's work I ever did, having often to go with only one meal a day. I attribute the saving of my life to PUTTNER'S EMULSION.
EMER E. MURPHY,
Livery Stable Keeper

CONFEDERATION

LIFE

ASSOCIATION.

HEAD OFFICE, - TORONTO.

J. K. MACDONALD, Managing Director

January 1, 1890.

Assets,	\$2,894,502.41
Liabilities,	2,664,253.75
Surplus,	\$230,248.66
1889.	
New Assurance,	\$2,369,500
Total	17,711,404
Premium Income,	561,293
Total	721,973

RESULTS OF BUSINESS OF 1889.

Increase in Assurance,	\$948,467
" Assets	341,140
" Premiums,	51,190
" Surplus	51,664
Surplus Earned	\$115,689

RATES LOW. PROFITS UNEQUALLED

F. W. GREEN,
Manager for Maritime Provinces,
166 HOLLIS ST., HALIFAX.

Best and Safest!



is said by Government Analyst to be composed of ingredients the best and safest for manufacturing Baking Powder.

THE BRAS D'OR STEAM NAVIGATION COY., (LIMITED.)

SUMMER ARRANGEMENTS.

On and after JUNE 9th the large and well furnished STEAMER

MARION

will leave Port Mulgrave for Sydney and intermediate ports in the Bras D'or Lakes every TUESDAY, THURSDAY, and SATURDAY on arrival of I. C. R. train, due at 2 1/2, Railway time, RETURNING will leave Sydney on MONDAY, WEDNESDAY, and FRIDAY at 2 p.m., connecting with Express Train leaving Mulgrave for the West at 10.20 Railway time.

The well known favorite Steamer NEPTUNE will leave Mulgrave for Sydney via St. Peter's Canal and fast lay on arrival of the train, DAILY, RETURNING same night, in time for Morning Train.

The beautiful Steamer MAGNOLIA will run on the Lake between WHYCOCOMAGH & LITTLE BRAS D'OR, via HAUDECK, as usual.

Tickets can be purchased at the Ticket Office of the I. C. Railway, and all information given at office of

J. W. GORHAM & CO. Halifax, N. S. AGENTS.