

# TEA! TEA! TEA!

A Full Stock of Superior  
**SOUCHONG, CONGO, INDIA, PEKOE,**  
**AND OOLONG,**  
 AT 25c., 30c., and 40c.  
 Best in the City for Price.  
**OUR SPECIAL BLEND, 35 Cts.,**  
 Very Superior. Try it.

## JAMES SCOTT & CO.

### SUGAR! SUGAR! SUGAR!

200 Bags Choice Demerara, Crystal,  
 20 Hhds. Porto Rico,  
 30 Hhds. Cuba Sugar,  
 31 " Granulated,  
 Superior to Nova Scotia Sugar.

## JAMES SCOTT & CO.

### AARON SINFIELD, MASON AND BUILDER, HALIFAX.

**BOILERS, OVENS, and all kinds of FURNACE  
 WORK a Specialty.**

Jobbing promptly executed in best Mechanical  
 Style, in Country as well as City, at Lowest possi-  
 ble Rates. ADDRESS, 7 GOTTINGEN ST.

To Machinists,  
 Engineers, Plumbers,  
 Mill Owners & Miners.

Having made arrangements with a Promi-  
 nent Brass Manufacturing Firm to handle  
 their goods, we will carry a stock of Brass  
 Goods and Steam Fittings in all branches  
 and be able to fill orders promptly at factory  
 discounts. Cast and

### MALLEABLE IRON FITTINGS!

Of these we will handle only a first class  
 American make.

We have also in Stock:  
**WROUGHT IRON PIPE,**  
**MACHINISTS' & MINERS' TOOLS,**  
**LUBRICATING OILS,**  
**CRUCIBLES.**

Packings of all Descriptions.  
 WRITE FOR QUOTATIONS.

## Wm. Stairs, Son & Morrow

174 to 190 Lower Water St.  
 HALIFAX, N. S.

# Truro Foundry and Machine Co.

TRURO, N. S.

## ENGINEERS AND FOUNDERS.

Our Specialties are—

### GOLD MINING MACHINERY

Of every kind, with latest Western  
 Improvements.

### ROTARY SAW MILLS

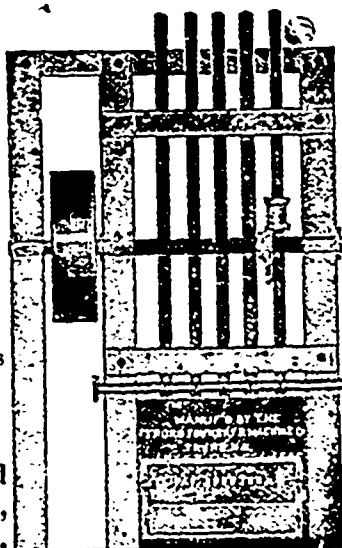
In Latest Styles, and

### HOT WATER BOILERS.

Estimates furnished for Heating Dwellings  
 Stores, Churches, &c., with Hot  
 Water or Steam.

—ALSO—

Manufacturers of Boilers and  
 Engines, Iron Bridges, Stoves,  
 Ship, Mill and General Castings.



### 1889 — GOLD MINING — 1889.

This year promises to be an active one in  
 our GOLD FIELDS. We are, in anticipa-  
 tion of this, directing our best efforts towards  
 meeting the enlarging demand for SUPPLIES  
 by special arrangements with leading manu-  
 facturers of the principal articles of consump-  
 tion. We will handle only the BEST  
 GOODS and SELL AT REASONABLE  
 PRICES, factors which have given us the  
 reputation for being

### The Best House in Nova Scotia FOR GOLD MINING SUPPLIES.

A visit or correspondence solicited.

### H. H. FULLER & CO.

41 TO 45 UPPER WATER ST., HALIFAX.

Metals, Mill, Mining and Fishing Supplies,  
 and General Hardware.

### FRED. A. BOWMAN, M.A., B.E.

#### Consulting Engineer.

DESIGNS & ESTIMATES FURNISHED FOR ALL  
 KINDS OF MACHINERY.

Mills Arranged to make the best use of the Power.

Water Powers and Mill Sites Surveyed.

All kinds of DRAUGHTING neatly executed.

3 Bedford Row, Halifax, N. S.

### CHARLES MYETT, CARPENTER & BUILDER.

Roofing & Jobbing promptly attended to.

6 ARGYLE ST., Halifax.

### F. W. CHRISTIE,

Member of the American Institute of Mining  
 Engineers.

Gold Mining Properties Examined,  
 Reported on, and Titles Searched

Information for Investors in Nova Scotia Gold  
 Mines. Estimates obtained for Air Drills and Air  
 Compressors for Mines and Quarries, and Steam  
 Drills for Railroad Contracts.  
 Reference—Commissioner of Mines for Nova Scotia  
 Address Letter or Telegram, BEDFORD STA-  
 TION, HALIFAX CO., NOVA SCOTIA.

### City Foundry & Machine Works,

#### W. & A. MOIR,

MECHANICAL ENGINEERS & MACHINISTS  
 Corner Hurd's Lane and Barrington St.

Manufacturers of Mill and Mining Machinery,  
 Marine and Stationery Engines, Shafting, Pulleys  
 and Hangers. Repair work promptly attended to.  
 ON HAND—Several New and Second-hand  
 Engines

### EXTRACTS FROM REPORT OF INSPECTOR OF MINES.

(Continued.)

**COPPER**—During the past season a good deal of interest has been shown  
 in the search for workable deposits of ores of this metal throughout the Pro-  
 vince. The increased value of the metal has stimulated the output of pro-  
 ducing mines all over the world, and as many were able to furnish the ore  
 or metal at remunerative rates, it has naturally followed that all deposits in  
 any respect promising have received much attention.

For a number of years past the demand for this metal has been to a cer-  
 tain extent defined. Now, however, the extension of its adaptability to  
 several important industrial developments, especially to that of electricity,  
 has brought out the fact that like tin, it must in the future be one of the  
 semi-royal metals.

In view of the fact that in this Province there are extensive areas of  
 Carboniferous and Laurentian rocks containing important indications of the  
 presence of this metal, it may not be amiss to refer to the attempt now made  
 to open copper-bearing strata on a working scale.

In a paper read by me some years ago before the Geological Society of  
 London, I gave a description of the then known deposits of Copper ore and  
 their Geological relations.

During the year 1888, the Copper ores of Tatamagouche were further  
 prospected and samples shipped. The Margaretsville, Annapolis County,  
 Copper Licenses were renewed. At this point the "Volcanic Ash," of Tri-  
 assic age as well as the overlying "traps" carry stringers and disseminated  
 grains of native Copper. The explorations hitherto made have given promise  
 of belts of cupriferous rock of workable value.

In Antigonish County, at several points, the Carboniferous Limestones  
 carry near their junction with Devonian strata, veins and masses of rich  
 Copper pyrites, and the dioritic dykes cutting the latter measures are fre-  
 quently Copper-bearing. As yet, however, explorations have been carried  
 far enough only to warrant expectations of future value.

In Cape Breton the Laurentian measures appear to show greater copper  
 values than the rocks of any other age. At Coxheath, near Sydney, vigorous  
 and successful developments have proved the fact that veins of Copper ore  
 of workable value do exist in Nova Scotia.

The Eastern Development Company, Limited, have secured two leases,  
 giving them a title to the copper and associated gold and silver over a tract  
 about three miles in length. Their property, situated about four miles from  
 the head of Sydney Harbor, lies along the northern side of the Coxheath  
 hills.

The easterly lease is known as the "Coxheath," and the westerly as the  
 "Argyle." On the Coxheath two shafts have been sunk, known as the East  
 and West shafts. When they reached the depth of about 175 feet and  
 machinery became needed, it was decided to push explorations in the west  
 shaft on account of the surface at this point being more favorable for the  
 convenient location of the necessary machinery, etc.

The western shaft is two hundred feet deep, from the bottom a cross cut  
 has been driven south 210 feet, which cuts at 67 feet a vein 5 feet wide,  
 showing copper ore. At the shaft bottom a level has been run east about  
 110 feet, and a cross cut made south to the five foot vein referred to. This  
 is a promising vein, averaging, as far as I could judge, 3 to 4 per cent  
 of copper in the lode. A cross cut going north from the face of this level, at  
 120 feet, cut a vein from 6 to 12 feet wide, and it was followed to the west  
 until opposite the shaft, when it was cut by a prolongation of the south cross  
 cut to the north, and the vein further driven on to the westward for 85 feet  
 This lode, where cut by the cross cut, should average 10 per cent. copper,  
 and I think that the vein, as opened for a distance of 200 feet, should aver-  
 age in the lode 6 per cent of copper. At the upper 120 feet level some  
 stoping has been done on a vein averaging 4 feet, lying in the shaft. This  
 has been driven in, and a considerable amount of ore taken out. This vein  
 holds in depth, as shown at the lowest level, is smaller, but holds purple ore  
 in quantity enough to keep its value. The stoped ore yielded 10 per cent.  
 copper.

A cross cut is now being driven from the 140 feet level to cut the ten  
 feet vein. This should open up a very large extent of good ground.

It is proposed to sink deeper and to cut these three veins again. This  
 will open up a large extent of stoping ground, and an output of 100 tons a  
 day should be easily maintained. There is already at hand about 100 tons  
 of 12 to 18 per cent. ore, and several hundred tons running from 3 to 8 per  
 cent., collected during the development work.

The surface work comprises five Rand duplex drills and compressor.  
 Hoisting engine having two cylinders, 8 by 8 inches, and a five feet drum  
 There is also an ample supply of pump power, but at present eight hours dis-  
 charge through a 2½ inch column keeps the mine dry. Steam is supplied  
 by three portable boilers aggregating about 125 horse power.

An engine with 10 by 20 inch cylinder drives the saw mill, lathe,  
 crusher, and screens. There are all necessary shops, magazines, and board-  
 ing houses for about 150 men.

At the time of my visit an ore dressing house 60 feet square was  
 being built, and arrangements were being made to add another compressor,  
 seven drills, and a 50 horse power boiler to the present plant.

A line of railway has been located and the right of way arranged for from  
 the mine to a loading and smelting ground on Sydney harbor, about 6 miles  
 from the mine. The work on the westerly or "Argyle" lease has so far  
 been confined to surface explorations, which have exposed the crop of two  
 very promising veins supposed to be the continuation of those now being  
 worked on the "Coxheath."

(To be Continued.)

fas  
rin  
joi

so  
lan  
hor  
If  
kni

If  
at  
con  
The  
it is

abo  
on  
of  
for  
to  
the  
so i  
with  
in  
and  
that  
cert  
esse  
fran  
part  
the  
dogg  
Algi  
and

worl

doll  
far t  
smul  
and  
profi  
pack  
Cane  
requ  
ship  
dists  
finde  
orch  
and  
also  
to th  
or in  
in N

I

them

V  
We l  
our  
(But  
annu  
mode

H  
gold  
of m

T  
wome  
suo l

S  
the st

N  
repeal

TC  
standi  
to Nicl