

McLEAN AND PEASLEE

526-7 Traders Bank Building - TORONTO
New and Used Electrical Apparatus.

Please note the following bargains in used motors and dynamos:

A.C. MOTORS.

3 H.P., 100 volt, 60-cycle, 1,800 R.P.M., single phase. Price, \$90.00
5 H.P., 220 volt, 60-cycle, 1,700 R.P.M., 3 phase, Westinghouse.
Price, \$75.00.
10 H.P., 550 volt, 60-cycle, 3 phase, 1,200 R.P.M., Bullock, with
starter. Price, \$150.00.
Other sizes on application.

D.C. MOTORS.

All sizes, $\frac{1}{2}$ to 50 H.P., 500 volts or 250 volts. Particulars on
request.

D.C. GENERATORS.

$\frac{1}{4}$ K.W., 110 volt, 2,100 R.P.M., Westinghouse. Price, \$25.00.
 $1\frac{1}{2}$ K.W., 110 volt, 1,400 R.P.M., Edison. Price, \$65.00.
7 K.W., 110 volt, Royal Electric. Price, \$100.00.

Immediate delivery of the above. Material thoroughly overhauled
and reliable.

THE CANADIAN ENGINEER
is the recognized engineering
authority in all parts of Canada.

Edited by technically trained men—
a complete weekly summary of
engineering news is given in each
issue—If you have a friend whom
you think would like a specimen
copy give us the name and address.

We will do the rest.

The Eastern Pipe and Construction Co., Ltd.

Water Works Contractors

MANUFACTURERS OF

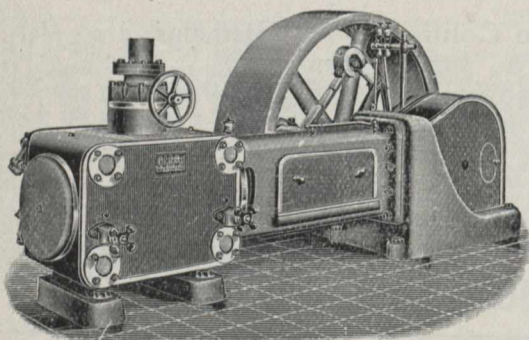
WOODEN WATER PIPE

For Water Works Systems,
Domestic Water Supply, Hydraulic Mining
Insulated Wire Conduits,
Steam Pipe Casings, Acid proof Pipe for
Mines, Tanneries and Pulp Mills
Sizes from 2 in. to 24 in.

WRITE FOR INFORMATION

Box 329, Alexandria
ONTARIO

ROBB CORLISS ENGINES



Have the Armstrong-Corliss valve gear, which will
operate at a higher speed than the ordinary
releasing gear.

This valve gear does not depend on springs or dash
pots for closing and runs without noise.

The wearing parts of the valve gear are enclosed
in a casing and run in oil so that friction is
reduced to a minimum.

Robb Engineering Co.

AMHERST, N.S.

LIMITED

DISTRICT OFFICES:

Canadian Express Building, Montreal, R. W. ROBB, Manager.
Traders Bank Building, Toronto, WM. McKAY, Manager.
Union Bank Building, Winnipeg, W. F. PORTER, Manager.
Grain Exchange Building, Calgary, J. F. PORTER, Manager.

Kindly mention The Canadian Engineer when corresponding with Advertisers.
You will confer a favor on both Advertiser and Publisher.