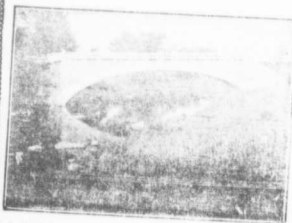


ROGERS' CEMENT



A Re-inforced Concrete Bridge on County Line Between Russell and Carleton—Permanent, Economical and Artistic.

STRENGTH

To Councillors and
Road Commissioners

Cements for

Sidewalks,

Sewers,

Bridges, Culverts,

Concrete Roads,

Waterworks, etc.

FOR MUNICIPAL WORKS
OF ALL KINDS.

If your municipality is planning permanent improvements with cement and concrete, make sure of securing quotations and full particulars from us on cement and concrete building materials at every kind.

Write, Phone or Wire

ALFRED ROGERS

LIMITED

28 WEST KING ST., TORONTO

"The kind you have
always found so satisfac-
tory"

Imitate Nature, Use
ROGERS' CEMENT

Our Motto:

"The Best"

Plant at
St. Marys, Ontario



A Glimpse of the Toronto-Hamilton Concrete Highway—Along Burlington Bay—"A Road for a Century."

PERMANENCY

To Farmers and Dairymen

Cement for

Foundations,

Stable Floors,

Root Houses, Cisterns,

Silos, Water-Troughs

Piggeries,

Poultry Houses,

Dairies, Cellars,

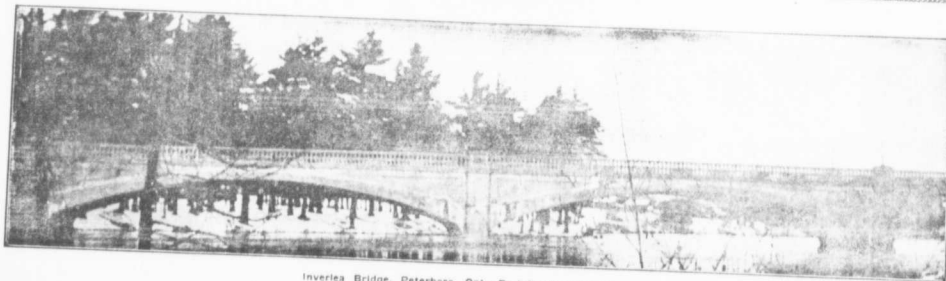
Fence Posts, etc.

Ask your dealer for Rogers' Cement. If you are planning to build, write us for our free booklet telling the proper proportions for mixing cement for the hundred and one uses on the farm.

ALFRED ROGERS

LIMITED

28 WEST KING ST., TORONTO



Inverlea Bridge, Peterboro, Ont.—Re-inforced Concrete.

W
V
M
5-4
sta
wir
rod
6-6
sta
wir
rod
7-4
In.
Har
3 1/2
rod
7-48
sta
wir
per r
8-
sta
spec
rod 1
8-
sta
wir
per r
9-18
sta
wir
per r
9-48
48 In
No. 2
6, 6, 6,
9-4
sta
spec
12 In.