

"OAKWOOD ON THE HILL"

What we consider the last good district on the hill overlooking the city is "Oakwood." There are building restrictions also that ensure a high-class home without any commercial environment. It is also our opinion that this property will advance in value at least 50 per cent. before the same date next year.

A new High School is being erected on the northern end of the property. Fall will see the building completed.

Somesplendid lots still left to tempt the investor or the Home-Builder. Get in now and secure a lot that will outstrip any bank interest you have ever heard of.

Phone us for terms and prices. They are both tempting.

Goulding & Hamilton

106 Victoria St., Toronto.

Phone Main 6510.

Branch Office—Weston.

PROPERTIES FOR SALE.

Waddington & Grundy's List.

SUMMER RESORTS for sale by Waddington & Grundy, 36 King East, Main 6296.

LAKE SIMCOE—"Lakecroft," close to Lake Simcoe; beautiful water front; lot 20 acres; shade and ornamental trees; good boating and bathing; price, \$60,000.

ORCHARD BEACH, Lake Simcoe—About one acre with furnished cottage, fruit trees, garden, cedar grove, etc.; fine trees; good sandy beach; safe for children; price, \$4000; would rent for \$50.

ROCHE'S POINT—Water front lot, with street in rear, about 500 feet, at \$15 per foot, or, on block, \$6000.

GRAVINGHURST—About five acres with large dwelling; good motor road; laid out; grand view of Muskoka Lake; suitable property for sanatorium, rest house or boarding house; price, \$9000.

LAKE SCUGOG—About thirty miles from Toronto; good motor road; four-roomed cottage, with about twenty acres; abundance of fruit, evergreen hedges; this property fronts on and has

Waddington & Grundy, Main 6296, Eglinton office, North 101.

Suburban Properties for Sale.

BY WADDINGTON & GRUNDY, Eglinton office, corner Yonge and Castlefield-avenue, Phone North 301.

Eglinton Houses.

\$2500—Six roomed house, furnace, bath, gas, water; lot 50 feet frontage; easy terms.

BRAR HILL—New bungalow, large living room, with open brick fireplace, five other rooms, with all conveniences; price, \$4500.

WOODWARD AVE.—Three modern houses, all with large lots, with fruit trees; price, \$5000, \$5500 and \$6000, respectively.

GLENVIEW AVE., near Yonge—New, nine-roomed house, with all conveniences; price, \$4500.

VICTORIA AVE.—New, ten-roomed house, modern in every respect; lot 20 x 40 feet; abundance of fruit; poultry house; for terms and permit to inspect apply at Eglinton office of Waddington & Grundy, Eglinton 101.

The McArthur-Smith Company List.

SOLID BRICK, six rooms, gas and water, good deep lot; price fifteen hundred dollars; accept three hundred cash down.

RIVERDALE DISTRICT, brick-clad, comparatively new, all conveniences; price twenty-five hundred dollars; terms arranged.

MANNING AVENUE, corner house, 8 rooms, conveniences; price, \$4500; arranged; price three thousand dollars.

SQUARE PLAN residence, York Loan District, detached, nine rooms, hot water heating. Terms arranged.

YONGE-BLOOR DISTRICT, detached brick house, eleven rooms, modern conveniences; garage or stable. Price right for immediate purchase; owner going west.

LISTS free at office. The McArthur-Smith Company, 24 Yonge.

IF YOU WISH to buy or sell real estate, house or lot, farm, hotel, boarding house, grocery or any other class of business, write or call on us, MacNurty-Brokers Company, 134 Bay-Street, 61669.

PROPERTIES FOR SALE.

The Union Trust Co.'s List.

Vacant Properties.

\$10 FOOT—Brownlow Ave., Davisville.

\$10 FOOT—Douglas-avenue, Davisville.

\$12 FOOT—Smith-ave., Eglinton.

\$14 FOOT—Glenview Ave., near golf course.

\$15 FOOT—Roehampton Ave., Eglinton.

\$15 FOOT—Bathurst St., Davisville.

\$15 FOOT—Stewart St., Davisville.

\$15 FOOT—Coxwell Ave.

\$17 FOOT—Oster Ave., 50 feet.

\$17 FOOT—Brar Hill Ave., Eglinton.

\$17 FOOT—Hawthorne Ave., Eglinton.

\$20 FOOT—Symington Ave., north of Royce.

\$25 FOOT—Broadway Ave., Eglinton.

\$27.50 FOOT—Glendale Ave., near Garden Ave.

\$30 FOOT—Glenview-avenue, near Yonge.

\$32.50 FOOT—Glen Grove Ave., near Yonge.

\$37.50 FOOT—Glen Grove Ave., near Yonge.

\$40 FOOT—Yonge St., Eglinton.

\$40 FOOT—Castle Frank Crescent, 30 feet.

\$47.50 FOOT—Castle Frank Crescent, 70 feet.

\$50 FOOT—Castle Frank Crescent, 50 feet.

\$1200—VILLA LOTS, Edgecombe Park; 150 feet frontage.

\$1400—THREE ACRES and small cottage, with stable, near Weston.

BLOCK OF LAND north of city for investment; call at office for particulars.

Houses for Sale.

\$300—THREE rooms, cottage, to be removed.

\$600—THREE-ROOMED cottage and small lot on Erskine avenue, Eglinton.

\$1250—SIX-ROOMED house, West Toronto, north of C.P. Ry.

\$2300—FIVE-ROOMED bungalow, overlooking a ravine; Eglinton.

\$2500—NEW brick house, 5 rooms, furnace, bath, gas, electric light; large verandah, good cellar, wide side entrance; nine hundred dollars down; balance easy.

\$2700—NEW brick house, six rooms, light, concrete cellar, good side entrance; easy terms.

\$2850—CAMPELL AVE., near Walbridge, six rooms and bath, finished in mission oak; hot water heating; 50 foot lot, well worth the money.

\$3000—DETACHED brick, six rooms, bath, furnace, Dugan-ave.

\$3600—EIGHT-ROOMED brick dwelling, August-ave.

\$4800—PAIR of houses, Lansdowne-ave., well rented.

\$5400—A PAIR of good solid brick houses just finished, six rooms, concrete floor, gas, electric light, furnace, large verandah, good side entrance, close to Bloor-street, on Symington-ave; well worth the money; would take a good lot in part payment.

\$5500—EIGHT large rooms, hardwood floors, hot water heating, on east side; terms to suit.

\$5500—EIGHT-ROOMED dwelling, every convenience and in first-class order; close to Avenue-road.

\$6000—GERRARD ST. EAST, near furnace, good rooming neighborhood.

\$6000—DETACHED residence, 8 large rooms, furnace, gas, fine lawn at side; West Marion street.

\$5500—SOLID BRICK residence, nine rooms, on choice residential street, of Avenue-road, concrete cellar, with separate toilet and porcelain wash; large kitchen and pantry convenient; arranged on ground floor; dining room, new parlor, and in first-class order; mantels in drawing, dining and sitting rooms; owner leaving city; must be sold immediately.

\$6800—ST. GEORGE ST., west side, 10 rooms.

\$8500—INDIAN GROVE, near Howard Park, choice.

\$7400—PAIR of new houses, Doves-avenue; would take vacant property in part payment.

\$8750—RUSHOLME ROAD, west side, fine location.

\$8800—BEVERLEY ST., west side, ten rooms, opposite Grange.

\$9000—KINGSTON ROAD, large lot, 9 rooms, east terms.

\$9750—FARNHAM AVE., 9x140, 9 rooms.

\$10000—GLENCAIRN AVE., 10 rooms, fine lot; new and improved.

\$12000—WALKER AVE., 12 rooms; 10x130.

\$13500—ROSEDALE ROAD, 6x100, 10 rooms, stable.

\$14500—SHERBOURNE, above Carlton, 12 rooms; good.

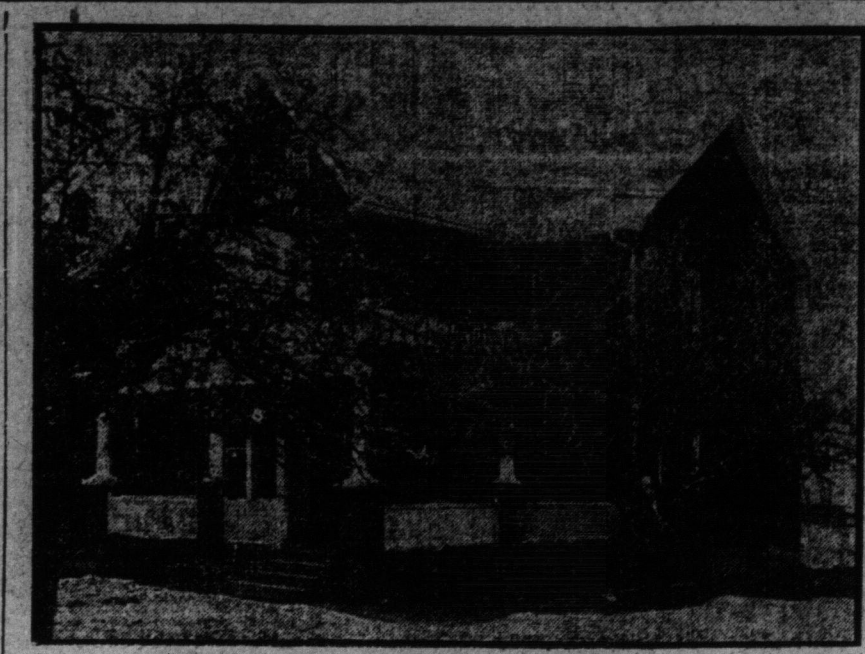
\$14000—ROXBOROUGH ST., 12 rooms, 2 baths; desirable.

\$16000—BEDFORD ROAD, 13 rooms, 4x120; reasonable.

\$33000—HILLSIDE residence, above Davenport road; very fine.

Outside Properties.

\$1200—BEAUTIFUL SPOT on the shore at Port Bowmanville, 60 acres; beach; several large apple trees; lawn, good fruit fence, building for motor or horse, good well and cistern; fine coal cellar; house in good repair; nine dal; an all-year round home at a quiet and convenient summer resort at a low price; half mile from G.T.R. station, about 20 yards from steamer wharf; good boating inside harbor, as well as lake; bus and provision store close by during summer season.



ON THE "BATHURST HILL."

\$2750 "Sacrifice for Cash." OWNER GOING WEST.

REAL ESTATE WAKEFIELD, Cor. St. Clair & Ossington Ave.

\$4500—SOLID BRICK, square plan, large, attractive rooms, each room with fireplace, 2 verandas, balcony, large hall, vestibule, up-to-date in every way; lot 10 x 10; attractive surrounding; \$1000 cash.

\$2200—SPLENDID frame house, seven rooms, large rooms, highly decorated, central heating, up-to-date in every way; lot 25 x 150; grand view of lake.

\$2350—NEAR ST. CLAIR, 8 rooms, 3-piece bath, furnace, verandah, electric, gas; cash, only \$150.

\$1800—COTTAGE, 6 rooms, cement cellar, large stable, coach house, beautiful locality; lot 55 x 120; cash, \$100.

\$650—CASH—Good opportunity for workingman to secure a home; 3-roomed cottage, passage entrance; lot 20 x 120.

\$10 UPWARDS—Lots for sale in this district. Call and see list.

REAL ESTATE WAKEFIELD

Corner St. Clair and Ossington Avenue

Take a Davenport Car

St. Clair Lots For Sale

\$33—Large corner lot, suitable for business; lot 50 x 150; cash, \$500.

\$35—Foot—North side St. Clair; 50 x 100.

\$30—Foot—Near Bathurst, 150 x 150.

FACTORY SITE on Davenport-road—Large corner lot.

FARMS FOR SALE.

W. A. Lawson's List.

3/4 ACRES—About three miles' walk from the Canada Cycle & Motor Works, on Weston road, over a hill, overlooking city and lake; no healthier or brighter spot can be found; lot 10 feet, and deep; terms arranged. Keys at office.

15 ACRES—On Kingston-road, about eight miles from City Hall; all nice level land; would make a lovely country home; 20 buildings, two hundred and twenty-five per acre.

26 ACRES—East York, ten miles from City Hall; rich and level; two hundred acres of land; ten acres of fruit trees, large stable, good-sized barn and stable. Forty-two hundred.

50 ACRES—Simcoe; one and half miles from depot; sandy loam; ten acres of bush, balance cultivated; balance frame house, stable, piggery and henery. Eight hundred.

50 ACRES—King, within twenty-seven miles of Toronto; free clay loam; thirty acres cultivated; balance pasture; frame house, barn, well and good windmill; easy price and easy terms, as owner must use it at present. Fifteen hundred.

50 ACRES—Scarboro, on Kingston-road; nice garden soil, orchard, one hundred and ninety cherry trees, two hundred apple trees, pear trees, plum trees, three acres raspberries, three acres strawberries, two hundred black currants; all at fruit in bearing; well watered; strawberries; ten-roomed brick house, bank barn, good stables, driveway and hay barn; a paying property. Eighty-five hundred.

100 ACRES—King, Toronto twenty-eight miles; clay loam, real good land, good orchard of two acres, ten-roomed brick house, good stables, buildings; worth the money. Fifty-three hundred.

150 ACRES—Dufferin, in the splendid right hand side of Grand Valley; one hundred acres to school, telephone, phone and all conveniences; clay loam, level land, all cultivated; seven-roomed frame house, large barn, stable and henery; thirty head; a good farm, cheap. Seventy-five hundred.

2500 ACRES—Choice wheat land, ad-seventy miles from C.P.R. line; twenty miles from postoffice; store and mill in this district at from eighteen to twenty miles; per acre; owner must have the money at once and will sacrifice for cash sale. Twelve-fifty per acre.

W. A. LAWSON, Ontario's Farm-Selling Specialist, 102 Church-street, Toronto.

140 ACRES—South Grimsby, 15 miles from Hamilton; good buildings, school, church, postoffice; store and mill; convenient; good stock and grain farm; under cultivation; 20 bush (reduced) \$200 for bush; never-failing stream; no waste land; 25 acres dark loam; excellent for small fruit; 3 acres stone foundation; suitable for 6 horses and 20 cattle; good well; \$1200, half down.

240 ACRES—Township of Uxbridge; 2 miles from postoffice, store and mill; C.P.R. station; 1/4 mile from church; 1/2 mile from school; 3 miles from Toronto; clay loam; rolling; about 100 acres free from stumps, 180 acres under cultivation; 28 acres of timber, worth about \$1000; good fences, wells and cisterns; good rough-hewn house of 6 rooms, stone foundation, cellar; bank barn, 40 x 60, stone foundation; suitable for 6 horses and 20 cattle; roof cellar, etc.; good orchard; \$2200; \$1500 down.

PHILIP & BEATON, Whitevale, Ont.

FARMS FOR SALE by Philip & Beaton, Real Estate Brokers, Whitevale, Ont.

50 ACRES—Township of Uxbridge; 2 miles from Goodwood, G.T.R.; 1/4 mile from school; 1/2 mile from church; 1/2 mile from Toronto; sandy loam, part rolling; comfortable rough-hewn house of 6 rooms, stone foundation, cellar; bank barn, 20 x 20, stone foundation, with stable for 4 horses and 10 cattle; small orchard; good well; \$1200, half down.

240 ACRES—Township of Uxbridge; 2 miles from postoffice, store and mill; C.P.R. station; 1/4 mile from church; 1/2 mile from school; 3 miles from Toronto; clay loam; rolling; about 100 acres free from stumps, 180 acres under cultivation; 28 acres of timber, worth about \$1000; good fences, wells and cisterns; good rough-hewn house of 6 rooms, stone foundation, cellar; bank barn, 40 x 60, stone foundation; suitable for 6 horses and 20 cattle; roof cellar, etc.; good orchard; \$2200; \$1500 down.

PHILIP & BEATON, Whitevale, Ont.

FARMS FOR SALE by Philip & Beaton, Real Estate Brokers, Whitevale, Ont.

50 ACRES—Township of Uxbridge; 2 miles from Goodwood, G.T.R.; 1/4 mile from school; 1/2 mile from church; 1/2 mile from Toronto; sandy loam, part rolling; comfortable rough-hewn house of 6 rooms, stone foundation, cellar; bank barn, 20 x 20, stone foundation, with stable for 4 horses and 10 cattle; small orchard; good well; \$1200, half down.

240 ACRES—Township of Uxbridge; 2 miles from postoffice, store and mill; C.P.R. station; 1/4 mile from church; 1/2 mile from school; 3 miles from Toronto; clay loam; rolling; about 100 acres free from stumps, 180 acres under cultivation; 28 acres of timber, worth about \$1000; good fences, wells and cisterns; good rough-hewn house of 6 rooms, stone foundation, cellar; bank barn, 40 x 60, stone foundation; suitable for 6 horses and 20 cattle; roof cellar, etc.; good orchard; \$2200; \$1500 down.

PHILIP & BEATON, Whitevale, Ont.

FARMS FOR SALE by Philip & Beaton, Real Estate Brokers, Whitevale, Ont.

50 ACRES—Township of Uxbridge; 2 miles from Goodwood, G.T.R.; 1/4 mile from school; 1/2 mile from church; 1/2 mile from Toronto; sandy loam, part rolling; comfortable rough-hewn house of 6 rooms, stone foundation, cellar; bank barn, 20 x 20, stone foundation, with stable for 4 horses and 10 cattle; small orchard; good well; \$1200, half down.

240 ACRES—Township of Uxbridge; 2 miles from postoffice, store and mill; C.P.R. station; 1/4 mile from church; 1/2 mile from school; 3 miles from Toronto; clay loam; rolling; about 100 acres free from stumps, 180 acres under cultivation; 28 acres of timber, worth about \$1000; good fences, wells and cisterns; good rough-hewn house of 6 rooms, stone foundation, cellar; bank barn, 40 x 60, stone foundation; suitable for 6 horses and 20 cattle; roof cellar, etc.; good orchard; \$2200; \$1500 down.

PHILIP & BEATON, Whitevale, Ont.

FARMS FOR SALE by Philip & Beaton, Real Estate Brokers, Whitevale, Ont.

50 ACRES—Township of Uxbridge; 2 miles from Goodwood, G.T.R.; 1/4 mile from school; 1/2 mile from church; 1/2 mile from Toronto; sandy loam, part rolling; comfortable rough-hewn house of 6 rooms, stone foundation, cellar; bank barn, 20 x 20, stone foundation, with stable for 4 horses and 10 cattle; small orchard; good well; \$1200, half down.

240 ACRES—Township of Uxbridge; 2 miles from postoffice, store and mill; C.P.R. station; 1/4 mile from church; 1/2 mile from school; 3 miles from Toronto; clay loam; rolling; about 100 acres free from stumps, 180 acres under cultivation; 28 acres of timber, worth about \$1000; good fences, wells and cisterns; good rough-hewn house of 6 rooms, stone foundation, cellar; bank barn, 40 x 60, stone foundation; suitable for 6 horses and 20 cattle; roof cellar, etc.; good orchard; \$2200; \$1500 down.

PHILIP & BEATON, Whitevale, Ont.

FARMS FOR SALE by Philip & Beaton, Real Estate Brokers, Whitevale, Ont.

50 ACRES—Township of Uxbridge; 2 miles from Goodwood, G.T.R.; 1/4 mile from school; 1/2 mile from church; 1/2 mile from Toronto; sandy loam, part rolling; comfortable rough-hewn house of 6 rooms, stone foundation, cellar; bank barn, 20 x 20, stone foundation, with stable for 4 horses and 10 cattle; small orchard; good well; \$1200, half down.

240 ACRES—Township of Uxbridge; 2 miles from postoffice, store and mill; C.P.R. station; 1/4 mile from church; 1/2 mile from school; 3 miles from Toronto; clay loam; rolling; about 100 acres free from stumps, 180 acres under cultivation; 28 acres of timber, worth about \$1000; good fences, wells and cisterns; good rough-hewn house of 6 rooms, stone foundation, cellar; bank barn, 40 x 60, stone foundation; suitable for 6 horses and 20 cattle; roof cellar, etc.; good orchard; \$2200; \$1500 down.

PHILIP & BEATON, Whitevale, Ont.

FARMS FOR SALE by Philip & Beaton, Real Estate Brokers, Whitevale, Ont.

50 ACRES—Township of Uxbridge; 2 miles from Goodwood, G.T.R.; 1/4 mile from school; 1/2 mile from church; 1/2 mile from Toronto; sandy loam, part rolling; comfortable rough-hewn house of 6 rooms, stone foundation, cellar; bank barn, 20 x 20, stone foundation, with stable for 4 horses and 10 cattle; small orchard; good well; \$1200, half down.

240 ACRES—Township of Uxbridge; 2 miles from postoffice, store and mill; C.P.R. station; 1/4 mile from church; 1/2 mile from school; 3 miles from Toronto; clay loam; rolling; about 100 acres free from stumps, 180 acres under cultivation; 28 acres of timber, worth about \$1000; good fences, wells and cisterns; good rough-hewn house of 6 rooms, stone foundation, cellar; bank barn, 40 x 60, stone foundation; suitable for 6 horses and 20 cattle; roof cellar, etc.; good orchard; \$2200; \$1500 down.

PHILIP & BEATON, Whitevale, Ont.

FARMS FOR SALE by Philip & Beaton, Real Estate Brokers, Whitevale, Ont.

50 ACRES—Township of Uxbridge; 2 miles from Goodwood, G.T.R.; 1/4 mile from school; 1/2 mile from church; 1/2 mile from Toronto; sandy loam, part rolling; comfortable rough-hewn house of 6 rooms, stone foundation, cellar; bank barn, 20 x 20, stone foundation, with stable for 4 horses and 10 cattle; small orchard; good well; \$1200, half down.

240 ACRES—Township of Uxbridge; 2 miles from postoffice, store and mill; C.P.R. station; 1/4 mile from church; 1/2 mile from school; 3 miles from Toronto; clay loam; rolling; about 100 acres free from stumps, 180 acres under cultivation; 28 acres of timber, worth about \$1000; good fences, wells and cisterns; good rough-hewn house of 6 rooms, stone foundation, cellar; bank barn, 40 x 60, stone foundation; suitable for 6 horses and 20 cattle; roof cellar, etc.; good orchard; \$2200; \$1500 down.

PHILIP & BEATON, Whitevale, Ont.

FARMS FOR SALE by Philip & Beaton, Real Estate Brokers, Whitevale, Ont.

50 ACRES—Township of Uxbridge; 2 miles from Goodwood, G.T.R.; 1/4 mile from school; 1/2 mile from church; 1/2 mile from Toronto; sandy loam, part rolling; comfortable rough-hewn house of 6 rooms, stone foundation, cellar; bank barn, 20 x 20, stone foundation, with stable for 4 horses and 10 cattle; small orchard; good well; \$1200, half down.

240 ACRES—Township of Uxbridge; 2 miles from postoffice, store and mill; C.P.R. station; 1/4 mile from church; 1/2 mile from school; 3 miles from Toronto; clay loam; rolling; about 100 acres free from stumps, 180 acres under cultivation; 28 acres of timber, worth about \$1000; good fences, wells and cisterns; good rough-hewn house of 6 rooms, stone foundation, cellar; bank barn, 40 x 60, stone foundation; suitable for 6 horses and 20 cattle; roof cellar, etc.; good orchard; \$2200; \$1500 down.

PHILIP & BEATON, Whitevale, Ont.

FARMS FOR SALE by Philip & Beaton, Real Estate Brokers, Whitevale, Ont.

50 ACRES—Township of Uxbridge; 2 miles from Goodwood, G.T.R.; 1/4 mile from school; 1/2 mile from church; 1/2 mile from Toronto; sandy loam, part rolling; comfortable rough-hewn house of 6 rooms, stone foundation, cellar; bank barn, 20 x 20, stone foundation, with stable for 4 horses and 10 cattle; small orchard; good well; \$1200, half down.

240 ACRES—Township of Uxbridge; 2 miles from postoffice, store and mill; C.P.R. station; 1/4 mile from church; 1/2 mile from school; 3 miles from Toronto; clay loam; rolling; about 100 acres free from stumps, 180 acres under cultivation; 28 acres of timber, worth about \$1000; good fences, wells and cisterns; good rough-hewn house of 6 rooms, stone foundation, cellar; bank barn, 40 x 60, stone foundation; suitable for 6 horses and 20 cattle; roof cellar, etc.; good orchard; \$2200; \$1500 down.

PHILIP & BEATON, Whitevale, Ont.

FARMS FOR SALE by Philip & Beaton,