

Store Opens Promptly at 8.30 a.m.

The Robert Simpson Company, Limited

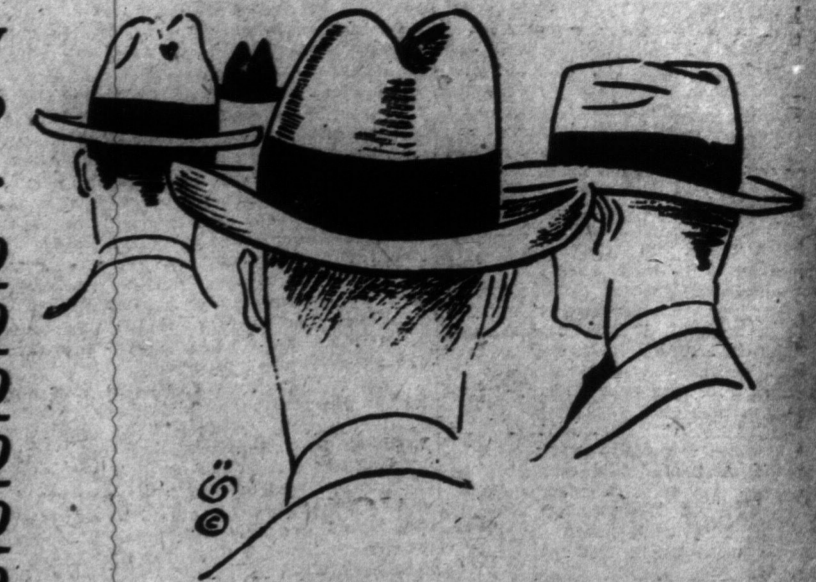
Store Closes Exactly at 5.30 p.m.



A Snappy, Stylish Hat Tends to Make Your Appearance ---Particular Men Wear Simpson Hats Because of Their Refinement---Instant Style and Perfect Fit

Simpson Hats have the snap and go that attracts discriminating dressers. They are admittedly style leaders---they gain in popularity every time one is sold.

Especially in these times when every man's money ought to command full value, these hats come strongly into the foreground as offering the utmost in genuine value-giving.



- THE VANITY HATS of New York**—Soft Felt Styles in Many Distinctive Shades . . . \$6.50
- JOHN B. STETSON HATS**—Soft Felt and Stiff Models, in the Newest Shades . . . \$6.00
- THE LINCOLN SOFT FELT HATS**—in Splendid Variety of Smart Fall Styles . . . \$5.00
- THE BURTON BLACK STIFF HATS**—in Big Variety of Shapes and Sizes . . . \$4.00
- THE FAMOUS CHRISTY HATS**—in Soft Felt Models for Fall and Winter . . . \$5.00
- LEEDS**—Are Exceptionally Nobby Soft Felt Hats and Priced at Only . . . \$4.00

Also a wonderfully complete variety of new Fall and Winter Caps, in smart stylish shapes for men and young men. Choose them in one, four or eight-piece tops. Moderately priced at 75c, 95c, \$1.50, \$2.00 and \$2.50. The Men's Hat and Cap Department is just inside the Yonge St. entrance, near Richmond.

The Simpson Boys' Clothing Department is Wonderfully Busy Outfitting Young Toronto With Suits and Overcoats of Style, Durability and Economy

Our Boys' Clothing is dependable, and that is of first importance these days when dependability means so much. Furthermore, Simpson Quality Clothing costs no more than other kinds not so superior, a fact which is apparent to those who have compared values before purchasing. Boys and mothers, too, are equally advocates of Simpson Boys' Clothes.



Breakfast?

That Means Simpson's Palm Room--6th Floor

Because here you find just the right environment, just the right sort of wholesome food, and just the right service. And what is equally important, the prices are just right.

Canada Food Board License No. 10-4322.

BREAKFAST, 8.30 to 10.00 a.m.
DINNER, 11.30 a.m. to 2.00 p.m.
AFTERNOON TEA, 3.00 to 5.30 p.m.
A LA CARTE LUNCHEONS all hours.

Boys' Homespun Suits

\$10.50 \$11.50 \$12.00

Grey and Green Homespun Suits in trench model, three-button, single-breasted style with vertical pockets; all around loose belt at waist. Full fitting bloomers with belt loops and governor fasteners.

Sizes 27 to 30, \$10.50; 31 to 34, \$11.50; 35 and 36, \$12.00.

Boys' Tweed Suits

\$13.50 \$15.00 \$16.00

Grey and Brown Mixed Tweed in two-button, single-breasted model; knife pleats extending from shoulder seams to pockets, inverted pleat in back; all around three-piece disappearing belt at waist. Full fitting bloomers with belt loops and governor fasteners.

Sizes 27 to 30, \$13.50; 31 to 34, \$15.00; 35 and 36, \$16.00.

Boys' Cheviot Suits

\$11.50 and \$12.50

Dark Grey Cheviot in three-button, single-breasted model; yoke back and front, with pinch pleats extending to waist; all around three-piece detachable belt, patch pockets. Full fitting bloomers and governor fasteners.

Sizes 27 to 30, \$11.50; 31 to 34, \$12.50.

Big Variety of Fall and Winter Overcoats for Boys

Boys' Blue Chinchilla Reefers, \$11.00

Blue Chinchilla Reefer, buttoned up close to neck—turn down velvet collar. Double-breasted model with G. R. brass buttons, half belt at back. Sizes 3 to 8 years, \$11.00.

Boys' Tweed Overcoats, \$13.50 to \$16.00

Grey Firm Finish Tweed, with invisible diagonal pattern, double-breasted model with convertible collar. Regular pockets with top flaps, half belt at back. Sizes 28 to 30, 40 to 42 years, \$13.50; sizes 31 to 34, 13 to 16 years, \$15.00; sizes 35 and 36, 17 and 18 years, \$16.00.

Boys' Raglan Overcoats, \$10.00

Brown and Fawn Fancy Check Tweed, Raglan shoulder, double-breasted model, convertible collar, all-round loose belt with buckle at waist; 3 to 8 years, \$10.00.

Boys' Trench Overcoats, \$17.00 to \$20.00

Brown Frieze Trench Model Overcoats, double-breasted model, slash vertical pockets, all-round-loose belt with buckle at waist. Sizes 28 to 30, 10 to 12 years, \$17.00; sizes 31 to 34, \$19.50; sizes 35 and 36, \$20.00.

Boys' Cheviot Suits \$13.50, \$15.00, \$16.00

Dark Green Cheviot in three-button, single-breasted trench model; slash vertical pockets and all around loose belt at waist, fastened with buckle. Full fitting bloomers with belt loops and governor fasteners.

Sizes 27 to 30, \$13.50; 31 to 34, \$15.00; 35 and 36, \$16.00.

Junior Norfolk Suits \$6.00

Sizes 2 1-2 to 8 Years

Junior Norfolk Suits, made in three shades of corduroy—tan, green and brown—Norfolk style with all around belt at waist. Sizes 2 1/2 to 8 years, \$6.00.

Little Boys' Suits \$7.00

Sizes 2 1-2 to 8 Years

Grey Tweed with black invisible stripe patterns, yoke front, plain back; coat buttons up close to neck; turn-down collar with extra white pique (detachable) collar, fastens at throat with silk cord and tassel. Sizes 2 1/2 to 8 years, \$7.00.

Black and Green Velvet Suits in Russian models; coat buttons up close to neck, with deep turn-down collar; white Bengaline tie; all around belt at waist. Coat is finished with white pearl buttons. Sizes 2 1/2 to 6 years, \$9.50.

NAVY BLUE VELVET CORDUROY SUITS in junior military model; military stand collar, with detachable white pique collar and cuffs; slash pockets; all around belt at waist. Coat is finished with white pearl buttons. Sizes 2 1/2 to 6 years, \$9.00.

The Robert SIMPSON Company Limited

British, Am
and Am

WITH the
dawn of
British
ing thru the
ized Germans.
In some
fallen to the
German lines
advancing.
Premont,
is more than
Robala.

This was the
alled armies to
Early in the de
carried the Br
deep into the p
the enemy.

The battle is
ous, as well a
point of the
wheel to wheel,
crashing on to
with wind, barr
part of the nig
The very air
racked with th
the explosion
throbbed vivid
which rain pos
visible for man
Small
Two British
converging ope
ly direction: T
which the Ame
line attacked at
denburg system
sides, while th
action up to C
the continuing
Mansfield line
in a turning m
appear that the
the Hindenburg
a broad front
be carried out.

High
The first pha
about 2 o'clock
the infantry, w
intense barrag
ground immedi
where the Can
runs along. S
given to other
southern outsi
town is know
by the enemy.

Already Briti
town have gone
so that success
undoubtedly re
into British ha
now pushing fo
court, Mallico
Sicilian, Fremo
dian, and town
Cateau road. I
will further ins
Cambrai.

As a matter
towns have pre
captured, but
meagre so soon
such great pro
British s

While this ha
in the northern
monstrations wh
there something
Bitter fighting
south of Camb
Americans and
miles to the sou
A cold rain ha
sight and cont
their faces. Mi
attack in some
was not thick
mixed with the
advance.

The enemy co
appears to have
for the German
peratness
moved their su
British barrage
among the ranks
The principal
the machine
pockets and nee
At this hour,
Proceeding with

Stin