

OUR CHECKER DEPARTMENT.

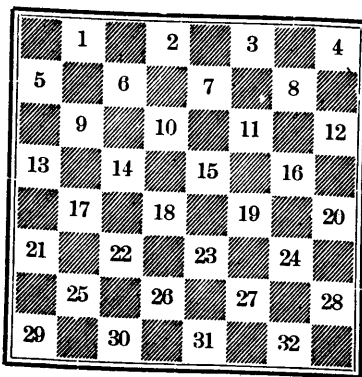
CONDUCTED BY ED. KELLY

[All Communications for this Department should be addressed to Ed. Kelly, 454 Main Street, Winnipeg.]

Games and positions from any grades of players are respectfully solicited for this department. If the checker players will interest themselves by forwarding a few original games and positions for publication we will be able to make this department better than any other published in Canada.

Reference Board for Beginners,

BLACK



WHITE

At the commencement of a game the black men occupy the squares numbered from 1 to 12, and the white men those numbering from 21 to 32. Place the men on the board and play over the games in this department, and in a short time you will consider yourself a first-class player. Black always moves first.

SOLUTION TO POSITION.

Black on 1, 5, 11, 14, 18, 20 King 30.

White on 13, 21, 24, 27, 28, 32, King 7.

Black to play and win as follows :

30-26	32-23	12-16	19-16	
7-16	26-12	9-5	14-18	7-11
18-23	A-23-24	16-11	21-17	17-14
27-9	5-14	24-19	18-23	23-27
20-27	13-9	11-7	16-12	B wins.

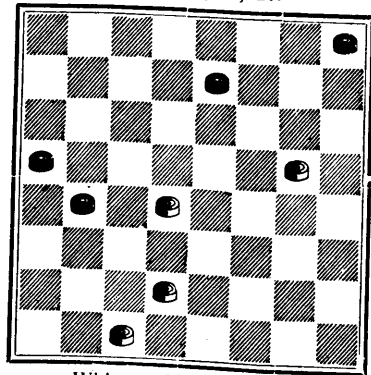
A

9-6	28-24	17-10	6-12
1-10	16-11	11-15	24-19
21-17	24-19	10-6	2-6
12-16	10-14	15-24	19-15
			B. wins

PROBLEM No. 8.

An end game from the second double corner, played between E. Kelly and Harry Norman.

Black on 4, 7, 13, 17.



White on 16, 18, 26, 30.

Black to play and white to win.

GAME No. 18. Irregular.

Played in a recent match between E. Kelly and Mr. Muirhead.

KELLY'S MOVE.

11-15	26-23	8-11	19-16	9-18
23-19	9-18	26-23	22-18	27-32
8-11	23-14	11-16	23-19	18-27
22-17	2-6	23-19	11-7	32-7
9-14	31-26	16-23	3-10	21-17
25-22	6-9	25-21	12-8	7-10
14-18	17-13	18-25	14-18	8-3
29-25	9-18	27-11	9-6	5-9
11-16	21-17	20-27	23-27	17-13
26-23	12-16	32-23	16-11	10-6
16-20	19-12	25-30	+10-14	3-8
23-16	10-14	28-24	6-2	9-14
4-8	17-10	30-26	1-6	8-11
30-26	7-14	24-19	2-9	14-18
6-9	13-9	26-22	18-23	Drawn.

GAME No. 19. Centre.

By the late Mr John Swan, Leslie.

11-15	24-8	16-20	23-19	3-8	14-10
23-19	4-11	30-23	10-17	16-7	12-16
8-11	17-14	9-13(1)	23-14	2-11	21-14
22-17	11-15	32-28	1-6	23-18	11-15
15-18	28-24	+6-10	26-23	8-12	
19-15	12-16	24-19	7-11	27-23	
10-19	26-23	15-24	19-16	6-9	Drawn.

(1).

21-14	22-6	23-18	19-16	12-8
(a) 2-6	1-17	7-10	3-8	11-15
26-22	25-21	21-17	16-12	18-11
6-10	17-22	5-9	8-11	9-14
				Drawn.

(a) The following also appears to be a draw:—

20-24	31-24	6-10	25-21	6-10
27-20	1-6	29-25	2-6	
18-27	25-22	10-17	21-14	Drawn.