

THE RICHMONDT CONDUIT & MFG. CO., LIMITED
SOLE MANUFACTURERS OF
RICHMONDT ELECTRO-GALVANIZED CONDUIT TUBING AND FITTINGS

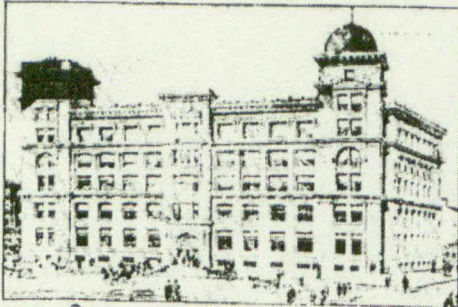


Contractors use it because—It Saves Time and Money.

Supply Dealers carry it because—It Sells Itself.

Architects specify it because—It fills the Underwriters' requirements.

FACTORY AND OFFICE: 15, 17 and 19 Jarvis Street, TORONTO, CANADA.



GRAND TRUNK OFFICE BUILDING.

The largest and most modern Office Buildings, Hotels and Factories are equipped with the

Webster System. of Steam Circulation

Our 1902 Illustrated Catalogue gives a full description of this System, and will be mailed on application.

DARLING BROS.

"Reliance Works,"

Montreal.

Cable Address:
GILMOUR, TRENTON

Established 1820

MAIN OFFICES:

TRENTON, ONTARIO

CODES (A B C
LUMBERMAN'S
ZEBRA)

Established 1820

GILMOUR & CO., LTD.

TRENTON CANADA



BRANCH OFFICES IN

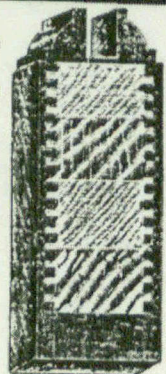
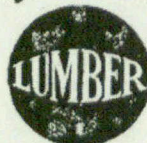
London, Eng.

New York

Chicago

Glasgow

PATENT
LUMBER



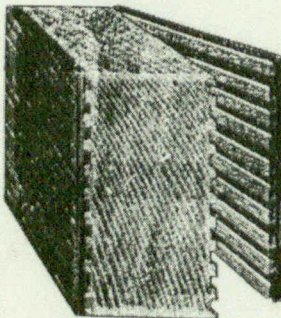
STILE SECTION

CAPACITY OF MILLS & FACTORIES

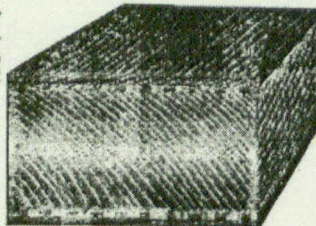
25,000,000 FEET
PER YEAR

OUTPUT;

300,000 DOORS
PER YEAR



SECTION SHOWING PROCESS



SECTION PATENT LUMBER

SAW MILLS, PATENT LUMBER, DOOR, SASH, BOX AND VENEER FACTORIES

MANUFACTURERS OF
SASH, DOOR AND BOX FACTORY GOODS, LATH, SHINGLES, RAILROAD TIES, TELEGRAPH POLES AND POSTS,
JOINERY, FINE INTERIOR FINISH, HARDWOOD FLOORING, ETC. EGG CASES, EGG FILLERS

WRITE OR WIRE FOR SAMPLES AND PRICE LISTS

Responsible Agents Wanted in
All Parts of the World

Gilmour & Company, Limited

TRENTON, CANADA

ORDERS PROMPTLY FILLED