

OUR CHESS COLUMN.

Solutions to Problems sent in by Correspondents will be duly acknowledged.

All communications intended for this department to be addressed Chess Editor, Office of CANADIAN ILLUSTRATED NEWS, Montreal.

TO CORRESPONDENTS

Student, Montreal. — Correct solution of Problem No. 96 received. M. J. M., Quebec. — Correct solution of Problem No. 94 received. The dual exists in this fine Problem as you point out. J. W. S., Windsor street, Montreal. — Correct solutions of Problems No. 91 and 93 received. F. N. L., Ottawa. — Correct solution of Problem No. 95 received.

We have not yet learned the result of the New York Centennial Chess Tourney. It appears however, that the following players out of the twenty-one competitors have been hitherto the most successful in scoring games: — Bird, Dehnar, Ensor and Mason.

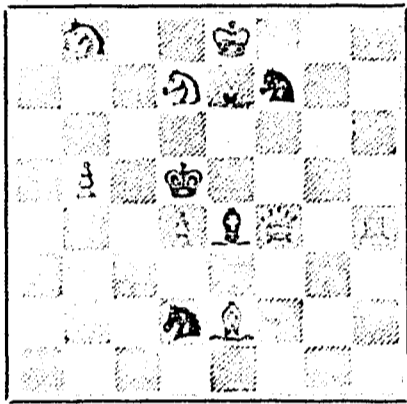
Theodore Brown, the celebrated American Problem composer, is dead. This is a great loss to Chess on this continent.

A notice appeared, a short time ago, in the American papers, that a boy of thirteen had taken the first prize in the Problem Tourney of the Detroit Free Press. We trust to see him the Morphy of future Chess celebrities. Since writing the above we have seen the final results of the New York Centennial Tourney. They are as follows: — Mason takes the first prize, Dehnar second, and Bird third. The position of Mr. Bird at the close of the Tourney, after defeating in it, Mason, Dehnar, and Ensor, his strongest opponents, requires some explanation, which we will endeavor to give in our next column.

PROBLEM No. 97.

By J. STONEHOUSE.

BLACK



WHITE

White to play and mate in two moves.

CHESS IN AMERICA. GAME 1491H.

The American Centennial Game between Mr. Barbour, Philadelphia, and Mr. Judd, St. Louis.

WHITE.—(Mr. Barbour) BLACK.—(Mr. Judd)

- 1. P to K 3 P to Q B 4
2. P to Q K 3 P to K 3
3. B to K 2 Q K to B 3
4. K K to B 3 K K to B 3
5. B to K 2 P to Q 4
6. P to K R 3 B to K 2
7. P to Q 4 Castles
8. K to Q 2 B to Q 2
9. P to Q B 3 B to Q B sq
10. Q to B 2 B to K sq
11. K to K 5 P takes P
12. K P takes P K takes Q P
13. Q to Q 3 K takes B
14. Q takes K B to Q 3
15. K takes B K takes K
16. Castles (K R) P to K 4
17. Q R to Q sq B to Q K sq
18. P to K B 3 Q to B 2
19. K R to K sq P to K 5
20. K to B sq K to K B 3
21. P to Q B 4 K P takes P
22. Q takes P R takes R
23. R takes R Q to R 3 (ch)
24. K to R sq P to Q 3 (ch)
25. Q to Q 3 R to Q 4
26. K to Q 2 B to B 3
27. K to B sq Q to R 4
28. R to R sq Q to K R 4
29. R to K sq Q to B 5
30. Q to Q sq K to R 4 (ch)
31. Q takes P (ch) P to K R 3
32. Q to K 4 Q to B 7
33. B to B sq B takes B
34. R takes B Q takes K (ch) (ch)
35. R takes Q K to K 6 (ch)

And Black wins.

NOTES.

- (a) A good move. This passed Pawn at once becomes useful to Black.
(b) This move of the Kt makes Black's attack very formidable.
(c) The young player will at once perceive that Black could not take the Q without being mated next move.
(d) Winning a piece and the game. The last moves of Black are worthy of the attention of the student.

SOLUTIONS.

Solution of Problem No. 95.

- WHITE. BLACK.
1. K to B 7 1. K moves
2. B to K B 8 2. K moves
3. B checks 3. K moves
4. P mates.

Solution of Problem for Young Players, No. 93.

- WHITE. BLACK.
1. K to K K 6 1. P moves
2. K to K B 7 2. K to K B 4
3. R mates.

PROBLEMS FOR YOUNG PLAYERS NO. 94.

- WHITE. BLACK.
K at Q B 3 K at K 6
R at K B 8 R at K R 2
B at K R 5 Pawns at Q 3 and Q B 4.
K at K 2
K at Q K 2
Pawns at K K 4, and K R 4.
White to play and mate in three moves.



FIRST PREMIUM Fur Establishment, CORNER NOTRE DAME & ST. LAMBERT STS.

LADIES' & GENTLEMEN'S CHOICE FURS in great variety, of the latest and leading styles, can be obtained at the above establishment.

Prices Reduced to Suit the Times. BANK OF MONTREAL.

NOTICE IS HEREBY GIVEN THAT A DIVIDEND OF SEVEN PER CENT.

upon the Paid up Capital Stock of this Institution has been declared for the current half-year, and that the same will be payable at its Banking House, in this City, on and after

FRIDAY, the FIRST DAY of DECEMBER NEXT.

The Transfer Books will be closed from the 16th to the 30th November next, both days inclusive.

By order of the Board, R. B. ANGUS, General Manager. Montreal, 12th October, 1876.

HOPKINS & WILY, ARCHITECTS AND VALUERS, 14-9-52-88 253 ST. JAMES STREET, MONTREAL.

LAWLOR'S CELEBRATED SEWING MACHINES, 365 Notre Dame Street, MONTREAL.

Montreal Business College.

Corner NOTRE DAME AND PLACE D'ARMES. Imparts a thoroughly commercial education, and offers superior advantages for preparing young men for business pursuits.

PATENT VENTILATOR BY GEO. YON, TINSMITH AND PLUMBER. Approved by scientists and artists, and within the means of all.

PRICE LIST Stove Pipe Exhauster, sufficient to aerate rooms wherein the pipes pass, \$1.50 Exhauster for Cooking Stoves, \$4.00 Hall, \$3.00 Complete apparatus of ventilation, consisting in metallic tubes affixed to the ceiling, for dwellings of 4 or 5 rooms in ordinary houses in Montreal, \$50 to \$75 FOR SALE at No. 241, St. LAWRENCE STREET, MONTREAL. LIBERAL DISCOUNT TO THE TRADE. 14-9-13-152

In consequence of spurious imitations of LEA AND PERRINS' SAUCE, which are calculated to deceive the Public, Lea and Perrins have adopted A NEW LABEL, bearing their Signature, thus, Lea Perrins which is placed on every bottle of WORCESTERSHIRE SAUCE, and without which none is genuine. Ask for LEA & PERRINS' Sauce, and see Name on Wrapper, Label, Bottle and Stopper. Wholesale and for Export by the Proprietors, Worcester; Crosse and Blackwell, London, &c., &c.; and by Grocers and Oilmen throughout the World. To be obtained of MESSRS. J. M. DOUGLASS & CO., MONTREAL; MESSRS. URQUHART & CO., MONTREAL. 14-14-52-165

HUTCHISON & STEEL, ARCHITECTS, Valuers of Real Estate, Buildings, &c., 121 ST. James St. A. C. HUTCHISON. A. D. STEEL. 13-9-52-87

DR. A. PROUDFOOT, OCUList & AURIST. Special attention given to DISEASES OF THE EYE AND EAR. Artificial Eyes inserted 37 Beaver Hall. Office hours before 10.30 a.m., 3 to 5 and 7 to 9 p.m. 13-7-52-77

THE CANADA SELF-ACTING BRICK MACHINES! Descriptive Circulars sent on application. Also HAND LEVER BRICK MACHINES. 244 Parthenais St., Montreal. 13-12-52-98 BULMER & SHEPPARD.

50 Bristol Visiting Cards, with your name finely printed, sent for 25c. 9 samples of CHROMO, Snowflake, Damask, Glass, etc., with prices, sent for 5c. stamp. We have over 200 styles. Agents wanted. A. H. Fuller & Co., Brockton, Mass. 14-6-52-143

CHROMOS LARGE AND SMALL—FOR DEALERS, AGENTS AND TEA STORES. The largest and finest assortment in North America, Twenty 9 x 11 Chromos for \$1.00. Address W. H. HOPE, 26 Beury St., Montreal. Headquarters for Foreign and American Chromos. Send for Superbly Illustrated Catalogue. 14-1-26-134

DR. WILLIAM GRAY'S SPECIFIC MEDICINE The Great English Remedy is an unobtainable cure for Seminal Weakness, Spermatorrhea, Impotency, and all diseases that follow as a consequence of Self Abuse, as Loss of Memory, Universal Lassitude, After-Pain in the Back, Dimness of Vision, Premature Old Age, and many other diseases that lead to Insanity or Consumption and a Premature Grave, all of which as a rule are first caused by deviating from the path of nature and over-indulgence. The Specific Medicine is the result of a life study and many years of experience in treating these special diseases. Pamphlet free by mail. The Specific Medicine is sold by all Druggists at \$1 per package, or six packages for \$5, or will be sent by mail on receipt of the money, by addressing WILLIAM GRAY & CO., Windsor, Ont. Sold in Montreal by R. S. LATHAM, J. A. HARTE, JAS. HAWKES, PICAULT & CO., and all responsible Druggists everywhere. 14-2-52-136

THE COOK'S FRIEND BAKING POWDER Has become a HOUSEHOLD WORD in the land, and is a HOUSEHOLD NECESSITY in every family where Economy and Health are studied. It is used for raising all kinds of Bread, Rolls, Pan cakes, Griddle Cakes, &c., &c., and a small quantity used in Pie Crust, Puddings, or other Pastry, will save half the usual shortening, and make the food more digestible. THE COOK'S FRIEND SAVES TIME, IT SAVES TEMPER, IT SAVES MONEY. For sale by storekeepers throughout the Dominion and wholesale by the manufacturer. W. D. McLAREN, UNION MILLS. 13-17-52-110 55 College Street.

DOMINION PLATE GLASS INSURANCE OFFICE ALEXANDER RAMSAY, 37, 39 and 41 RECOLLET STREET, MONTREAL. Reference: Citizens' Insurance Co. 13-1-47

E. N. FRESHMAN & BROS. ADVERTISING AGENTS, 186 W. FOURTH ST. CINCINNATI O. ESTIMATES FURNISHED FREE SEND FOR OUR MANUAL.

ARCH. McINTYRE, CARPENTER and JOINER. BANKS, OFFICES and STORES fitted up in the best and most economical style. JOBING of all kinds promptly attended to. 1078 ST. CATHERINE STREET, CORNER DRUMMOND. 13-1-52-294

WANTED! SALESMEN at a salary of \$1200 a year to travel and sell goods to Dealers. NO PEDDLING. Hotel and traveling expenses paid. Address, MONITOR MANUFACTURING CO., Cincinnati, Ohio.

CHEAPEST AND BEST. DAILY WITNESS, MONTREAL WITNESS, WEEKLY WITNESS, CANADIAN MESSENGER, NEW DOMINION, MONTHLY.

JOHN DOUGALL & SON, 218 and 220, St. James Street, Montreal. Electrotyping and Job Printing, Chromatic and Plain cheaply and neatly done.

\$54.50 Can be made in one week at home. Samples free. ADDRESS: MONTREAL NOVELTY CO. 14-14-52-161 236 St. James Street, MONTREAL, P.Q.

APPROVED BY THE MEDICAL FACULTY. DEVIN'S WORM PASTILLES. The most effectual Remedy for Worms in Children or Adults. Le meilleur remede contre les vers chez les enfants ou adults. PASTILLES DE DEVINS CONTRE LES VERS. APPROUVEES PAR LA FACULTE MEDICALE.

A Box will be sent to any address in Canada (post paid) on receipt of 25 cents. DEVINS & BOLTON, Druggists, Montreal.

ACME CLUB SKATE. (FORBES' PATENT.) Used extensively in Europe and America, and acknowledged to be the leading self-fastening Skate in point of quality, finish and convenience. For sale by all respectable dealers. Wholesale orders solicited by THE STARR MANUFACTURING COMPANY, MANUFACTURERS, HALIFAX, N. S. Patent rights secured. 14-12-13-159

Painting & Decorating. In first-class style. J. MURPHY, 706, Craig St., Montreal. 14-1-52-135.

\$225! PIANO-FORTES. \$225! New—fully warranted, 7 octave—all modern improvements—tone full, rich and pathetic—exquisite combination, producing a most beautiful orchestral effect. The most thorough test and examination desired. \$25 dollars each. Repairing done in all its branches at moderate prices and warranted.—LEICESTER, BUSSETT & CO., Piano Manufacturers, 270 Mountain St. 13-4-52-67