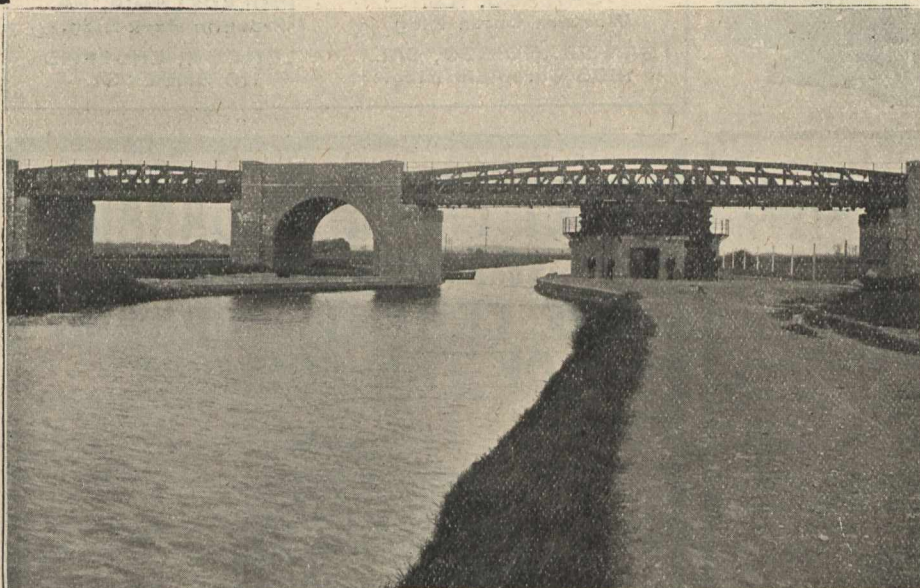


# VULCAN PORTLAND CEMENT

WILLIAM G. HARTRANFT CEMENT CO., LIMITED  
Sole Selling Agents, MONTREAL

## The Cleveland Bridge and Engineering Company, Limited

GENERAL ENGINEERS and CONTRACTORS  
DARLINGTON, ENGLAND



IRON AND STEEL ROOFS, PIERS,  
CYLINDERS, RIVETTED GIRDERS  
FOR WAREHOUSES, LANDING  
STAGES, JETTIES, CAISSONS, FLOORING  
PLATES, COLLIERY PLANT and all Con-  
structional Iron and Steel Work

JAMES THOMSON,  
Pres. & Man. Director.

J. G. ALLAN,  
Vice-President.

JAMES A. THOMSON,  
Secretary.

ALEX. L. GARTSHORE  
Treasurer.

**The Gartshore-Thomson Pipe & Foundry Co., Limited.**  
MANUFACTURERS OF

## CAST IRON PIPE

For WATER, GAS, CULVERT and SEWER. FLANGE and FLEXIBLE PIPE and SPECIAL CASTINGS. Also all kinds of Water Works Supplies.

**HAMILTON. - - Ont.**

CURTIS ENGINEERING SPECIALTIES

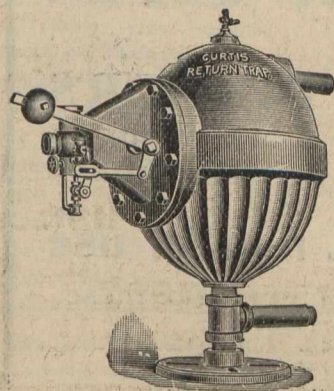
## RETURN STEAM TRAP

For automatically returning  
condensed water (at any  
temperature) to the boiler,  
without loss of heat. . . .

Send for Catalogue

**JULIAN D'ESTE COMPANY,**

24 Canal Street, BOSTON, Mass.



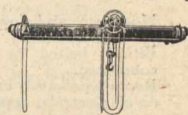
## THE CANADIAN ENGINEER

is read all over Canada

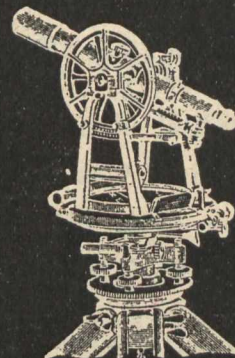
## Electric & Hand Cranes

**NORTHERN CRANES**

NORTHERN ENGINEERING WORKS  
DETROIT MICHIGAN ~ U.S.A. The Newton Cupola



## C. L. BERGER & SONS



Established 1871

## Precise Mining and Engineering Transits AND Levels

Patent Interchangeable Auxiliary Telescope for use on top or side in vertical sighting

Send for Illustrated Catalogue and Manual  
Boston, Mass.

## WORLD'S LARGEST DREDGER.

Description of the Leviathan, Building For the Mersey.

The giant dredger of the Mersey Docks and Harbor Board is now nearing completion at the Tranmere Bay Development Company. The dredger ship was begun a little over twelve months ago and launched in October. Her construction embodies the greatest improvement in maritime engineering. Great progress has been made in the installation of the propelling machinery, hydraulic machinery and pumps, and it is hoped that her trials will take place early in the new year.

Designed by the engineer-in-chief to the Mersey Docks and Harbor Board (Mr. A. G. Lyster), the Leviathan is to be placed at the Mersey Bar for the further improvement necessary to main-

(Continued on page 48.)