

FLOODS CAUSE GREAT DAMAGE

Thrilling Rescue of Farmer and His Wife—Marooned on Roof Eight Hours

ICE JAM 30 FEET HIGH

Despatches report serious damage from floods in Western Ontario. In the London district ice jams and resulting rapid rise of the Thames drove people to the upper stories or even the roofs of their dwellings, some not being safe even there, but having to be rescued by firemen. In the Grand Valley, too, there was considerable loss, though Newport yesterday afternoon averted the threatened submergence of low-lying lands. In many places cellars of houses, stores and factories contained two feet or more of water, and manufacturing plants in some places were prevented from operating.

A Thrilling Rescue.—The thrilling rescue of Herbert Hotham, a Delaware farmer, and his wife, after they had remained marooned on the roof of their home from 6 o'clock this morning until 2 o'clock in the afternoon, marked a day of wild anxiety for the rural populace of the district bordering the Thames River between Kilworth and Komoka.

A heavy rainstorm last night flooded the river rapidly, and at an early hour a huge ice jam formed, 30 feet high, near Komoka Bridge. Within a short time many farmers were driven from their homes and hundreds of acres with farm buildings, were inundated. Many are reported to have lost cattle and other live stock.

Driven to Their Roof.—Hotham awakened at 6 o'clock this morning to find his house filling with water, and the whole of his property under a flood, through which raced great ice floes in a strong current. Unable to escape by other means he climbed with his wife into the attic, but the waters followed them up in an incredibly short time, and to avoid death, with bare hands they smashed a hole and escaped on to the roof.

There they signalled for help across more than half a mile of turbulent waters, but farmers attracted by their plight could render no assistance. The mercury fell to close to the zero mark, and Hotham and his wife suffered intensely.

London Sends Firemen.—No boats were available in the district, and when hope of accomplishing their rescue by other means was abandoned, an appeal was sent to London. The Mayor at once ordered a special train and directed a party of city firemen to proceed with boats to Komoka. The train was made in record time, but the inundated area was more than a mile from the railway line. Meanwhile a number of farmers worked feverishly in the construction of a small flat-bottomed boat, but Hotham, fearing that his wife could not withstand the rigors of exposure, determined to make an attempt to reach land over the thin coating of ice just forming. Tearing a board from the roof, he started, but four times in his tortuous half-hour journey the ice broke beneath them and they were precipitated into the water, at places ten feet deep.

TOO LATE TO CLASSIFY

FOR SALE—At 19 Palmerston Ave. private sale of new household furniture etc. A40

LOST—Between 126 Spring street and Wilson Coal Office, black purse containing sum of money and car tickets, reward at 126 Spring street. L36

FOR SALE—Kitchen range, high-shelf reservoir also new electric hot plate. Apply 148 Alice. A40

WANTED—Bright girl handy with needle, soon become tailress, good salary to start with. Apply now 57 1-2 Colborne street opposite King. F40

WANTED—Bookkeeper for ready-to-wear store, one with clerical experience, preferred. References. Box 141 Courier. F40

WANTED—Ladies, order your spring suits now, before the Spring rush and higher prices. 57 1-2 Colborne opposite King, Height of Fashion. F40

REID & BROWN Undertakers
814-816 Colborne St.
Phone 459. Residence 44

H. B. BECKETT Funeral Director and Embalmer
158 DALHOUSIE STREET.
Both Phones 23.

H. S. PERCE & CO. Funeral Directors and Embalmers
Successors to H. S. Perce
75 Colborne Street
Prompt and courteous service day and night. Both phones 200.
W. A. Thorpe. O. J. Thorpe.

UPHOLSTERING
All kinds of Upholstering
William & Hollinrake
Phone 187. 2 & 4 Darling St.
Opera House Block.

Farmer and Boy Effect Rescue
A strong current bordered the land from which a little group of helpless farmers watched them, and into this the improvised boat was at length launched. Robert and Clarence Maier, two young boys, aided by John McEwen, a farmer, cast out in it, and at great hazard took Mr. and Mrs. Hotham off the ice and rowed them ashore.

Mrs. Hotham was taken to the McEwen home, where she is reported in a serious condition as a result of her sufferings. She is a sister of Edward Flood, of 1,084 Mabel St., who was recently killed at the G. T. R. coal chutes.

Will Dynamite Jam To-day
Unless the jam moves out during the night, which seems unlikely, County Engineer Talbot will arrange to have it dynamited to-day. An appeal is to be made to the Canadian Engineers in London Camp to undertake the work.

Stream May Cut New Channel
A turbulent stream is racing down the Delaware-Komoka highway, which parallels the river. The stream is now a mile wide, and fear is expressed by Engineer Talbot that the new channel now being cut will become the regular stream. Should this develop, as seems probable, there will be a serious loss to both the county and the farmers whose properties are affected.

Port Stanley Again Flooded
The main street of Port Stanley was flooded yesterday for the second time within a week, when Kettle Creek rose fourteen feet. Thirty families were driven from their homes but the water later receded. Scores of cattle have been drowned in fields and barns.

Zero and Bitter North Wind
Tuesday night the temperature was 50 degrees above zero, but all day yesterday it has been at zero, and with a biting north wind, the suffering of the flood victims became worse. Last night the water had gone down four feet, and is still slowly subsiding. Those driven from their homes are being cared for by neighbors. At many points in the river the ice is piled 20 feet high.

The London firemen did splendid work in rescuing people from their homes.

Menace to Fishing Fleet.
If the weather turns mild again, and the ice jam moves out, the whole fleet of fishing tugs at Port Stanley is in danger of being carried into the lake with it.

30-ft. Rise Sends Komokans to Roof
London, Ont., Feb. 20.—A party of firemen with boats left London this afternoon at 1.30 for Komoka, ten miles west of London, where several families, who reside on farms along the Thames River, were marooned.

Some families were on the roofs of their dwellings waiting the arrival of help. An ice-jam in the river caused the trouble. The water in some places rose thirty feet in a short time.

Thousands of Dollars' Damage.
Galt, Feb. 20.—Following the recent mild weather and a terrific rain storm last night, the ice on the main here broke at 5.50 this morning, and Galt experienced its annual flood. The Grand River overflowed its banks, and many cellars in the valley were flooded, causing several



THE BLIND BEAR
Where are you leading me? —From Le Journal of Paris

thousand dollars' loss to merchants, manufacturers and householders, who had made no preparation by way of moving goods from the basement, as the ice was not expected to break up for some time. The ice was from two and a half to three feet thick, and it piled onto the Main and Concession street bridges, tearing up the flooring and doing some damage to the ironwork.

Water mains going over the bridges were loosened at the joints, and when the resulting spray froze a Niagara-like effect was produced. Gas mains going under the bridge, were broken. Traffic had to be stopped on both bridges, and that on Main street was resumed this afternoon. The Fire Department was called out several times to help

remove goods from flooded cellars. Three factories Unable to Open. Woodstock, Feb. 20.—The Canadian Furniture Manufacturers, Ltd., factories, Hay and Co.'s and the Woodstock Wagon Company were unable to open this morning owing to the floods. The water got into the boiler rooms and factories to a depth of two feet.

The flats in the surrounding country are veritable lakes, many bridges being almost submerged. Many accidents occurred here on account of the slippery condition of the sidewalks. Wm. Bryce of the fire department slipped on the ice and broke his leg above the ankle. James Hornby received severe gashes in his head, which necessitated several stitches.

Cold Turn Saves Guelph
Guelph, Feb. 20.—The timely arrival of cold weather prevented serious flood damage in this city, but for a time it looked like a repetition of the floods of 1912-1913. As it is, much low-lying land near the river is under water, the river rising three feet in a few hours. Owing to thaw and rain, probably more cellars in this city have been flooded than ever before. The sewers and storm drains could not take care of the water.

Industries Affected Somewhat
At the carpet mills men were watching the greater part of the night, and precautions were taken to remove valuable goods to safety. The cellars of the spinning mills contained water, but this came from the overflowing creeks and drains in the neighborhood. At the Fried-Grills hat factory, on Suffolk street, the fires were put out and the factory closed down to-day. Water in the basement also interfered with the work at the Libby, McNeill & Libby factory.

TO-MORROW NIGHT.
For extraordinary value and money money saving read the advertisement at bottom of page six in to-morrow's Courier.

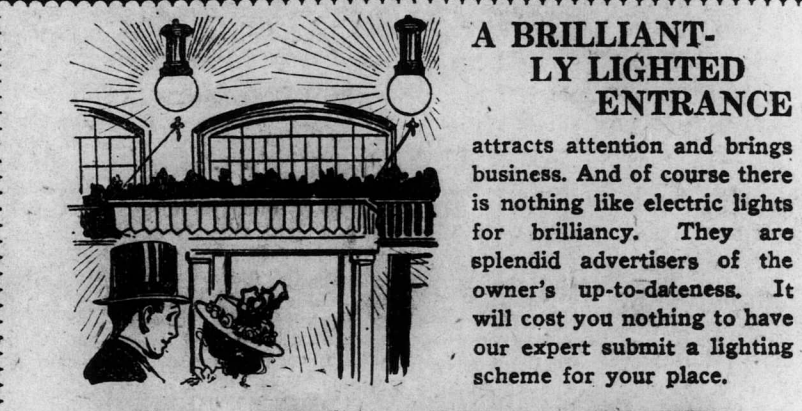
The Edison Diamond Disc Phonograph "Official Laboratory Model" price now \$350.00. The most marvelous musical instrument of the age. Come in and hear it any time you have some leisure at H. J. Smith and Co.'s Edison Shop, Brantford.

Children Cry FOR FLETCHER'S CASTOR OIL

OF COURSE YOU'LL TAKE FLOWERS

when you attend that next function. It is most decidedly the correct thing to do. Come in then and order a bunch of Sweet Peas, Violets or other dainty blooms. We will make it up for you in any size and charge so little that you will not regret the expense in any way. We also have a large assortment of plants and put up funeral designs.

W. Butler
322 Colborne St. The Veteran Flower Store.
Bell 1589. Auto 402. All orders given prompt attention.



A BRILLIANTLY LIGHTED ENTRANCE
attracts attention and brings business. And of course there is nothing like electric lights for brilliancy. They are splendid advertisers of the owner's up-to-dateness. It will cost you nothing to have our expert submit a lighting scheme for your place.

W. BUTLER
322 Colborne St. Electric Contractor—The Veteran Electric Store.
Bell 1589. Automatic 402. Repair work given prompt attention.

Girls Wanted
Girls for various departments of knitting mill, good wages, light work. Previous experience not necessary. The Watson Manufacturing Co., Ltd., Holmdale.

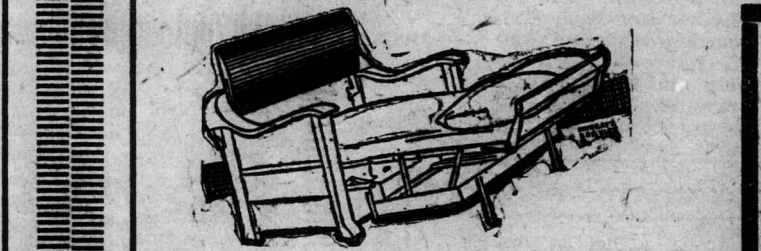
T. J. MINNES
PLUMBING AND ELECTRIC
Phone 301. 9 King St.



FURNITURE SALE

EIGHT DAYS MORE OF OUR BIG FURNITURE SALE

If you have not purchased yet, take advantage of these wonderful values now. The prices quoted below represent extraordinary value and you have a large range from which to choose. We must have room for our Spring stock that is coming in daily, therefore, reduced prices. "Everything for the Home."



Davenettes

In fumed oak, covered with imitation leather. Takes up very little room and makes an ideal piece of furniture. When extended makes a most comfortable bed; reg. \$46.00; Sale price...

\$37

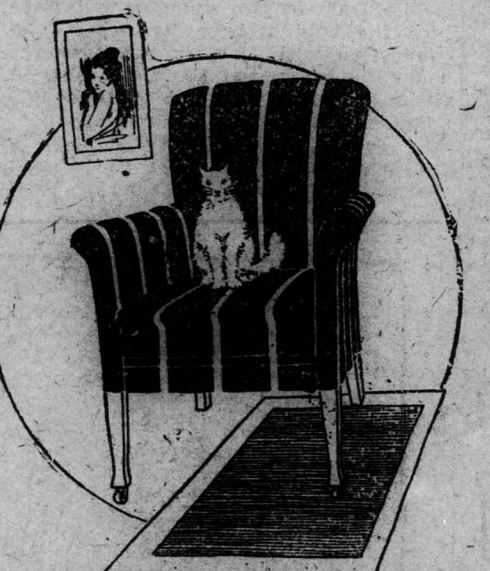
Kitchen Chairs
100 extra well built Kitchen Chairs, to clear at, each ... 85c

NOTICE
If you are thinking of purchasing before Spring be sure and get our prices. We save you money
J. W. Burgess

Bedroom Suites

A beautiful bedroom Suite, consisting of dresser, triple mirrors, dressing table and wooden bed to match; Sale—

\$58
Others in White Enamel and Mahogany



EASY CHAIRS

COVERED IN IMITATION LEATHER AND TAPESTRIES AT PRICES THAT YOU CAN AFFORD. SPECIAL LINE REDUCED TO—

\$9.50

Diningroom Suites

Beautiful dining room suites of American black Walnut, William and Mary design; consisting of 1 Buffet, 1 China Cabinet, 1 Extension Table and six Slip-Seat Chairs. Regular price \$219.00, Sale price—

\$165

Beautiful Mission, Quartered Oak, Dining Room Suite, consisting of 1 Buffet, 1 China Cabinet, Extension Table and six chairs. Regular price \$138.00; Sale price—

\$98

J. W. BURGESS

Our Store Hours: 9 a.m. to 5.30 p.m. Saturday's From 9 a.m. to 9 p.m.

44 COLBORNE STREET. OPEN EVENINGS.



Sullivan John

John L. Sullivan, the greatest fighter of the era, was born in 1868 in Waterbury, Conn. He fought his first professional fight in 1890, and won the world championship in 1892. He was known for his power and speed, and was a favorite of the American public. He died in 1914.

GO RUB

GO BO

This rough demands footwear. Changes in are to be most daily less your protected, sickness.

Better Rubbers

more

Shoe 122 COL Both Ph

Pa now