

FARM AND DAIRY

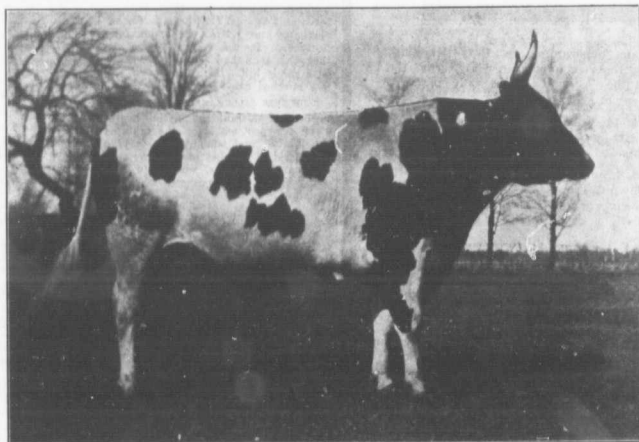
RURAL HOME

Printed at Farm & Dairy Co. Ltd. 515 King St. W. Toronto, Ont. Dec. 15, 1913

PETERBORO, ONT.

JUNE 13

1913.



WHAT IS THE VALUE OF A SIRE SUCH AS THIS?

The type of the Ayrshire bull here illustrated is worthy of study. Notice his fine masculine bearing, his great length, the deep full middle, the straight lines and generally attractive appearance. And then compare him with the average cheap sire so common throughout the country. What a marvellous difference a sire such as this would make in the dairy stock of a district! Such a bull would be cheap at almost any price. As we dairy farmers come to appreciate the value of sires of choice, milky breeding the prices that breeders of pure bred stock will pay for select animals such as this one, which heads the herd of A. S. Turner & Sons, Ryckman's Corners, Ont., and the prices dairymen with grade herds will pay for their herd headers, will make the prices now paid look meagre indeed. A good bull is the best investment a dairyman can make.

DEVOTED TO
BETTER FARMING AND
 CANADIAN COUNTRY LIFE