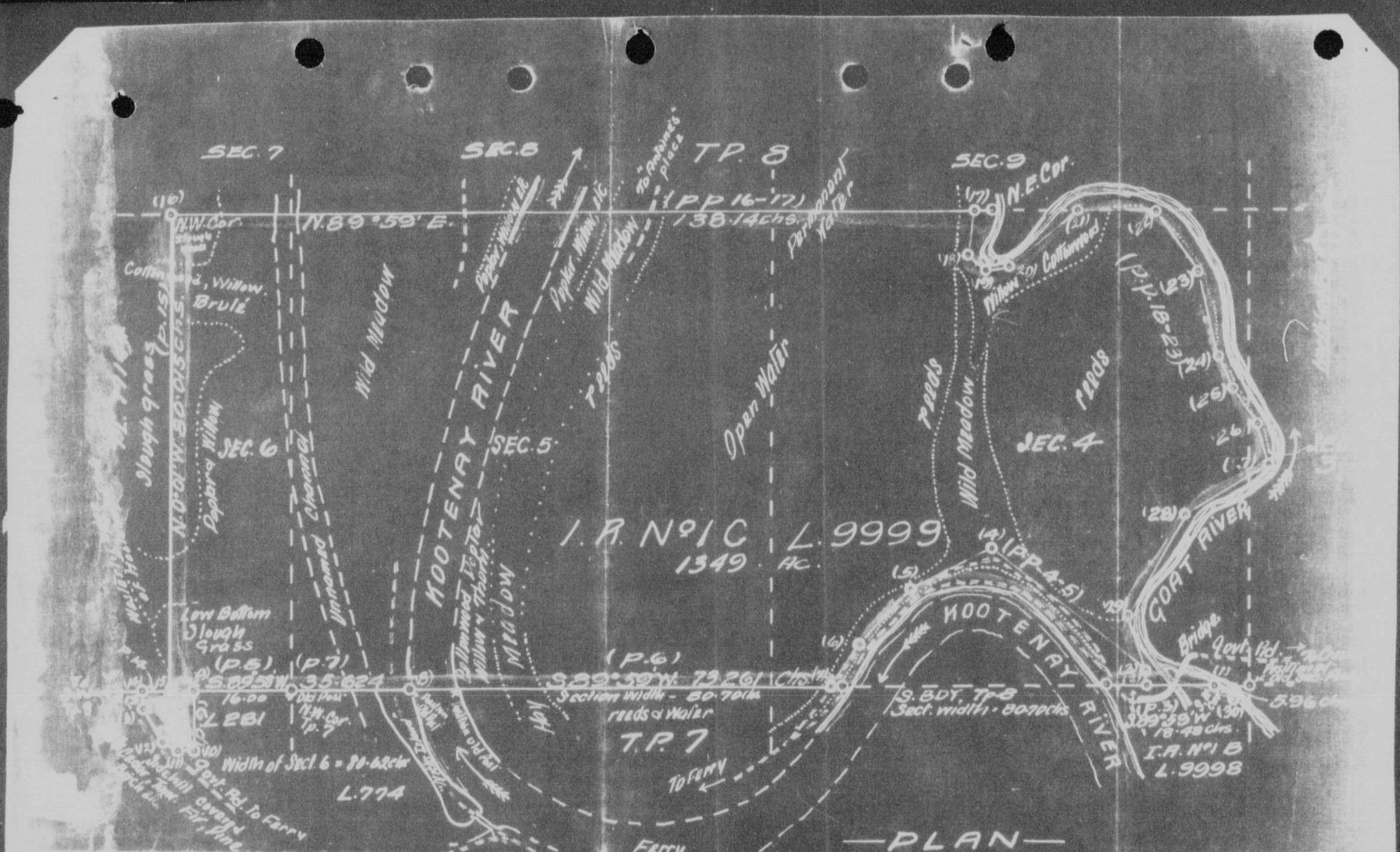


001874



STA.	COURSE	DIST.	STA.	COURSE	DIST.
1-2	S 89° 59' W	11.026	17-18	S 9° 23' W	7.749
2-3	S 89° 59' W	11.026	18-19	S 35° 20' E	3.963
3-4	S 89° 59' W	11.026	19-20	N 80° 13' E	3.771
4-5	S 89° 59' W	11.026	20-21	N 80° 13' E	15.180
5-6	S 89° 59' W	11.026	21-22	N 80° 13' E	12.619
6-7	S 89° 59' W	11.026	22-23	N 80° 13' E	15.163
7-8	S 89° 59' W	11.026	23-24	N 80° 13' E	7.769
8-9	S 89° 59' W	11.026	24-25	N 80° 13' E	6.660
9-10	S 89° 59' W	11.026	25-26	N 80° 13' E	16.427
10-11	S 89° 59' W	11.026	26-27	N 80° 13' E	19.351
11-12	S 89° 59' W	11.026	27-28	N 80° 13' E	19.420
12-13	S 89° 59' W	11.026	28-29	N 80° 13' E	15.063
13-14	S 89° 59' W	11.026	29-30	N 80° 13' E	3.722
14-15	S 89° 59' W	11.026	30-31	N 80° 13' E	
15-16	S 89° 59' W	11.026			
16-17	S 89° 59' W	11.026			

PLAN OF LOWER KOOTENAY INDIAN RESERVE NO. 1C L. 9999 G. 1. WEST KOOTENAY B.C.

Scale - 20 chs. = 1 in. Surveyed for Ind. Dept. of Canada. 1926 J.G. Cummings B.C.L.S.

B.C. 500

REPEAT REPETITION

INDIAN RESERVE APPAISE IN 1926  
 National Archives of Canada  
 Archives nationales du Canada