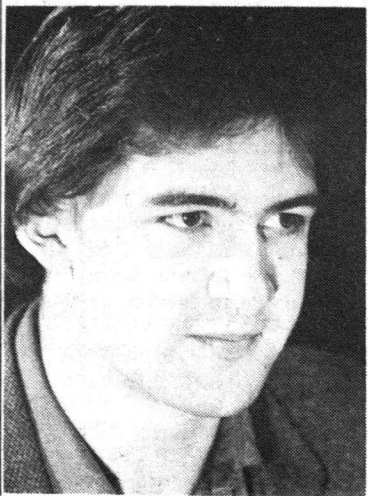


# Candidates: for better or worse

## The Soper Slate

### Phil Soper

Presidential Candidate - Soper Slate



A University's primary purpose is to educate, and the quality of education provided is the standard by which the University's success is measured. While there are many competent individuals on the decision-making bodies of the University and government, the perspective from which these administrators view overcrowded classrooms, deteriorating libraries and escalating student living costs, is much different from that of the students themselves. The

members of the Soper Slate will ensure that students have strong representatives on the University boards and provincial committees, which have such important influence on the quality of education we receive.

In order to provide quality representation and beneficial services, it is imperative that the SU have a stable organizational base from which to operate. The Students' Union owned retail outlets that are draining student fee revenue will be evaluated; comparing the benefit such areas provide with the cost to students. Management will be given clear performance guidelines and if these businesses are unable to meet such, we will consider the replacement of management or the business itself.

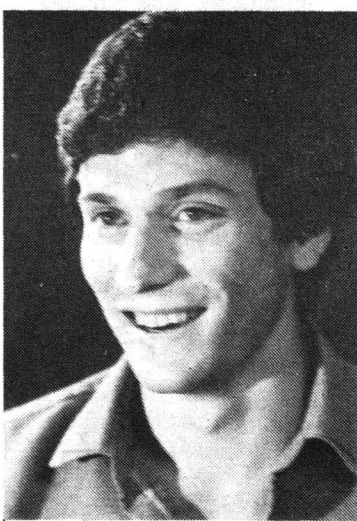
The individuals on the Soper Slate have qualifications, enthusiasm and ideas necessary to finally make your Students' Union work for you.

### Elise Gaudet, Vice-President Finance & Administration Candidate - Soper Slate

Deficit problems stem from student business ventures such as SU Box Office and the Art Gallery which are expected to contribute net profits but in recent years have required subsidization. To main-

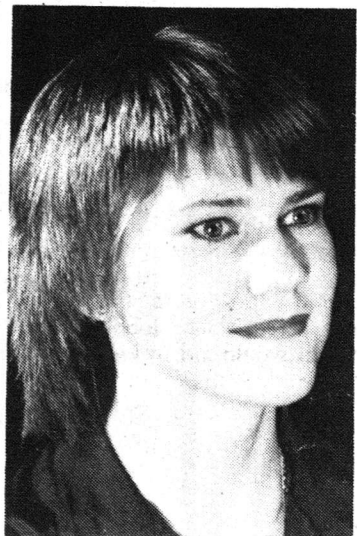
### Brian Bechtel,

Vice-President Internal Candidate - Soper Slate



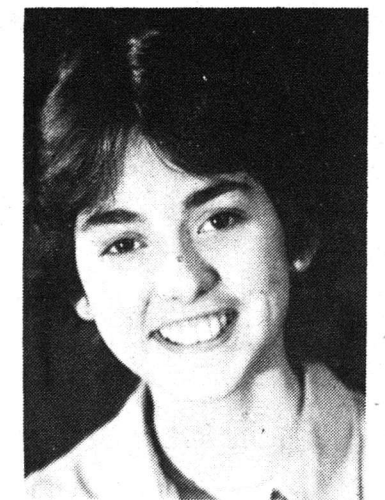
At a time when Students' Union Finances are in a decidedly difficult situation, the policy of the Vice-President Internal must necessarily be one of improvement and consolidation of existing business and services rather than expansion into new, and potentially expensive areas. Renovations that would make Friday's and the other food service areas into a paying proposition must be considered. While the addition of any major service is out of the question until the financial situation improves, there are changes that would be desirable and relatively low-cost. The establishment of a separate information service need not be expensive but would greatly improve the profile of the Students' Union services and provide a valuable information center for students. A greater liaison with clubs could be achieved by providing better access to information and assistance in terms of funding, accounting and, if possible, space. A consistent Dinwoodie booking policy with greater information available for interested groups would go a long way to alleviate problems experienced in the past.

While the Soper Slate is dedicated to the efficiency and profitability of student owned businesses, we intend to continue and improve popular services.



### Elizabeth Lunney, Vice-President Academic Candidate - Soper Slate

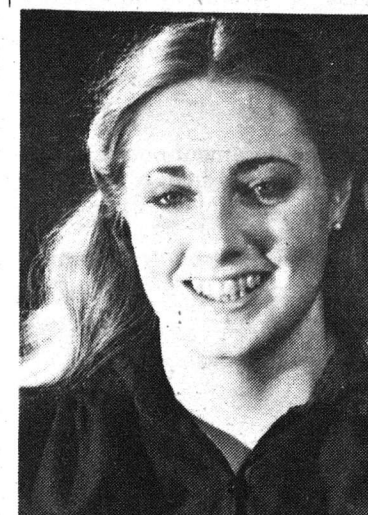
The role of the Students' Union will necessarily become increasingly important in the coming year. The importance of strong student representation from the smallest Faculty Council to the General Faculties Council plenary cannot be over emphasized.



My point is easily illustrated given the current budgetary restraint facing the University. For example, total library funding for text and periodical purchases in real dollar terms has declined by approximately 50% over the past decade. Academic positions have been lost, and sufficient and

### Lisa Walter,

VP External - Soper Slate



The VP External can accomplish needed changes to governmental policy, only with the support of students. Cutbacks in university funding, deficiencies in the Student Loan Program, and tuition fee increases, for example are issues on cutbacks in the faculties, and organize informal information sessions, and structured forums. We can provide students the needed background and organization to enable them to become involved.

The Minister of Advanced Education has indicated his preference to deal with the provincial student federation, instead of individual campus student groups. Additionally, their record of successful lobby and data resources merit our support and cooperation in lobbying the provincial government. I hope to discuss specific policy considerations with students personally and encourage attendance at the Forum on Wednesday.

It is time for the VP External to make this campus, and the needs of students here, the first priority.

adequate study space has become a concern for all students. The Soper Slate is committed to active participation at all levels of University government ensuring that student concerns are voiced and student needs are met. A continued decline in the quality of our education is intolerable.

A strong student voice, however, must be developed at all levels. For this reason the Soper Slate is dedicated to the support of strong Departmental Clubs and Faculty Associations. Closer communication and cooperation with the SU will aid each group in best serving student interests.

At this point an important distinction must be made. We are committed to bringing the SU to the students and not pushing the students thru the doors of the SU Building.

### Bob

Presid Kirk S



I de Union P saw a potential of its abil social ne terms of role in th It is my c encourag among tl that mak will be b with prc face us, ir financial

My over the university Faculties Council, Space C President Committe develop tl necessary president. dent gove floor coor MLA Lob ding, as Students' Academic helped me be firm as representi

Wher please giv considerat the good p on the Kit

### Dariel

Vice-Pres. Candidate



In view financial pos Union it is develop and services anc ideas and inn

### DO YOU WANT?

- A Challenge
- Management/Leadership
- New Skills/Techniques
- Part-time Employment
- 12 Weeks Guaranteed Summer Employment

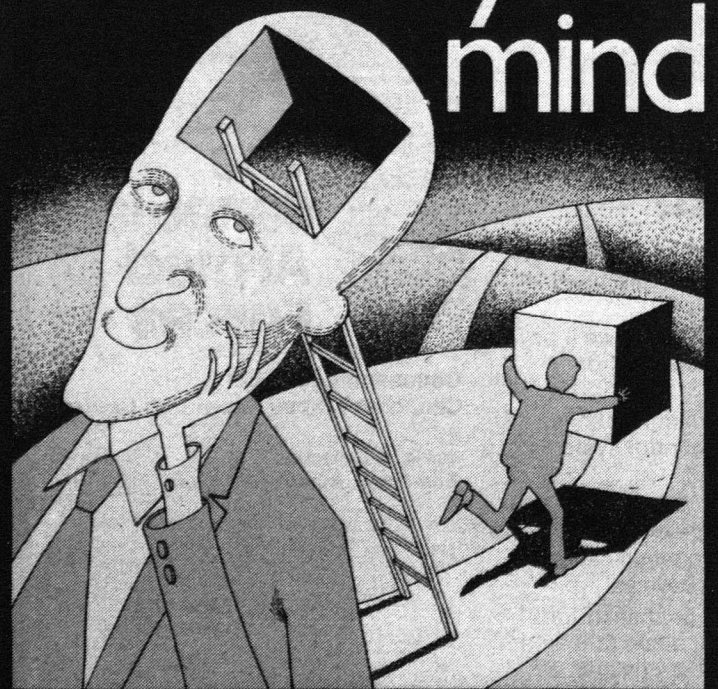
### CONSIDER

The Canadian Armed Forces Primary Reserve Reserve Entry Scheme Officers in Engineering, Artillery, Armoured and Infantry Classifications

### FOR FURTHER INFORMATION CONTACT

Northern Alberta Militia District HQ  
Telephone 456-2450 (Ext 432)

# Get it off your mind



CUT LOOSE with recording artists  
**FOOTLOOSE**

Dinwoodie Cabaret Fri. Feb. 6  
\$4.00 HUB Box Office

## We sell pictures

Seen yourself in the Gateway lately? For a small fee our Photo Department will make prints of our photographers' pictures. For more information drop by the Gateway office.

## We sell pictures