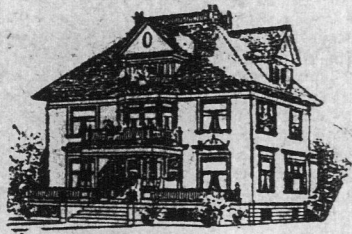


McAvity's Messenger

In the Spring, when the trees start to bud and Nature begins to display her most radiant colors the necessity of paint is shown on every hand by force of contrast, and man feels he must do his part in making everything bright, clean, fresh and in harmony with nature by the liberal use of paint. But there is another and far more important reason for the use of paint, particularly to those of a practical nature, and that is the fact that paint not only beautifies but preserves and protects the surface it covers, thus prolonging its life. In fact painting is as essential as fire insurance. A house, barn or fence that is left to suffer at the will of the elements will rapidly decay and depreciate in value, to say nothing of the loss of appearance. Decay is slow burning—and to keep your buildings well painted insures them against decay. Taking for granted, then, that painting is an absolute necessity, it then becomes a question of the right paint to use, and we take pride in offering to the public paint which, if properly applied when used, is guaranteed to give satisfaction.

Hand and Ring Pure Prepared Paints



The materials of these convenient and easily applied paints are mixed in the exact proportions and combined in the right way to make the paint give good service, and the shades are true, permanent and uniform.

If the householder, the farmer, or the mechanic wishes to "touch up" for Spring himself, he cannot procure a more satisfactory liquid paint for inside or outside use than Hand and Ring Pure Prepared Paint. From the standpoint of economy, ease of spreading, covering power and durability there are few just as good—none any better—and none to equal them at the price.

Furnished in thirty attractive popular shades, put up in easy-to-open cans. We have one uniform price except for Window Blind Green and certain Reds on which there is a moderate advance.

Upon request we will mail you color card showing shades with suitable trimmers kept in stock.

HAND AND RING HOUSE PAINTS



ORDINARY COLORS
Prices on all colors, including Outside and Inside White, except Vermilion, Permanent Red and Window Blind Green.

Size Cans . . . 1 lb. 2 lb. qt. 1 gal. 1 gal.
Each . . . 13c. 26c. 60c. \$1.05 \$2.00

SPECIAL COLORS

Prices on Vermilion, Permanent Red and Window Blind Green.

Size Cans . . . 1 lb. 2 lb. qt. 1 gal. 1 gal.
Each . . . 17c. 34c. 65c. \$1.20 \$2.30

HAND AND RING FLOOR PAINTS

Floor Paints must have materials which resist the constant wear to which they are subjected. In Hand and Ring Floor Paints are combined the most durable, wear-resisting pigments known, ground in tough elastic oils. This insures a hard and durable paint that will stand foot friction and may be scrubbed or washed without injury, and that dries over night with a hard, smooth, glossy surface. These Floor Paints may also be used on outside floors such as verandahs, steps, porches, board walks, etc. Their application preserves the wood and saves many a repair bill.

Made in seven selected shades and sold at a uniform price. See color card.

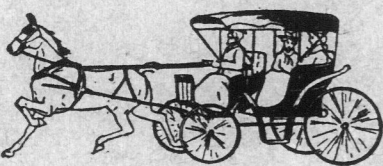
Size Cans 1 lb. 2 lb. qt. 1 gal. 1 gal.
Each 60c. \$1.05

FLOOR ENAMEL

This Enamel will give a finish to your floor which cannot be obtained in any other way. It dries hard over night with a mirror gloss, is not affected by washing, never sticks, wears like iron, and is guaranteed a superior Floor Enamel in every respect.

Quart Cans, Each 55c.

"ANCHOR" CARRIAGE GLOSS

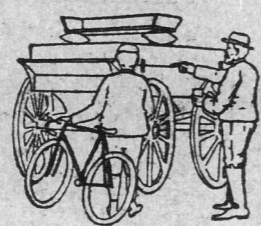


This is a tip-top ready-to-use paint for refinishing and renovating carriages, buggies and vehicles of all sorts in an easy and economical manner. It gives a strong, durable elastic coating of a high lustre that dries in a short time—you can paint one day and drive out the next.

These paints are also admirably adapted for touching up porch and lawn furniture, farm implements, etc. The colors are Vermilion, Coach Green, Carmine Red, Wine color and Jet Black. See color card.

Size Cans 1 pt. 1 pt. qt. qt.
Ordinary Shades 20c. 35c. 60c.
Verm. and Carmine Red 25c. 40c. 70c.

Farmers' Wagon Paint



This paint is especially prepared for the protection and decorating of wagons, carts, plows, mowers, reapers and all kinds of farm implements and tools.

Color and gloss is produced in one operation and it gives a brilliant and pleasing effect not obtainable with ordinary paint.

Furnished in the following shades—Dark Green, Vermilion, Jet Black, Wine Color, Yellow and Blue.

Prices on all above shades except Dark Green and Vermilion.

Size Cans 1 pt. 1 pt. qt. qt.
Each 15c. 25c. 45c.
Size Cans 1 pt. 1 pt. qt. qt.
Vermilion and Dark Green 20c. 35c. 60c.

MASURY'S PAINTS

In Oil, Japan and Distemper

These celebrated paints are the recognized standard and unexcelled for their different uses. They are backed by a worldwide reputation for strictly high-class paints brought to a point of perfection by nearly one hundred years' experience in paint making and an intimate association with the business of painting. Price lists on request.

"ANCHOR" COLORS IN OIL

These colors for tinting white lead have been long and favorably known and are good reliable colors for ordinary work.

Size Cans . . . 1 lb. 2 lb. 5 lb. 12 1/2 lbs. 25 lbs.
Black . . . \$.09 \$.18 \$.40 \$.75 \$ 1.34
Yellow 11 .22 .50 .89 1.63
Venetian Red . . . 11 .22 .50 .89 1.63
Blue 11 .22 .50 .89 1.63
Green 11 .22 .50 .89 1.63
Indian Red . . . 13 .26 .60 1.02 1.95
Chrome Yellow . . 13 .26 .60 1.02 1.95
Red Oxide 13 .26 .60 1.02 1.95
Golden Ochre . . 12 .24 .55 1.06 2.04

DRY COLORS

Per Pound
Vermilionette . . . 20c. Burnt Sienna . . . 15c.
Zinc White . . . 10c. Burnt Umber . . . 10c.
Ultramarine . . . 10c. Raw Sienna . . . 15c.
Blue 30c. Raw Umber . . . 10c.
Chrome Yellow . . 20c. Vandyke Brown . . 15c.
Venetian Red . . . 6c. Brunswick Green . . . 10c.
Rose Pink . . . 20c. Chrome Green . . . 15c.

Dry White Lead
Size Cans 1 lb. 2 lbs. 5 lbs.
Each 12c. 20c. 50c.

ZINC WHITE IN OIL

Size 1 lb. 2 lbs. 5 lbs. 12 1/2 lbs. 25 lbs.
Each 12c. 24c. 55c. \$1.13 \$2.13

White Lead

The quality of the paint depends upon the quality of the lead and if you want the best work—or if you want to start right with such good old-fashioned materials as the best painters use—Pure White Lead and Linseed Oil. To insure getting Pure White Lead ask for either of the following brands:

McAVITY'S GENUINE B.B. WHITE LEAD

BRANDAM'S GENUINE B.B. WHITE LEAD

McAvity's Genuine B. B. White Lead

In tins, 1 1/2 and 5 lb. 10c. per lb.

In tins, 12 1/2 lb. \$1.75; 25 lb. \$7.25 per 100 lbs.

Brandam's Genuine B. B. White Lead

In tins, 12 1/2 lb. \$8.90; 25 lb. \$35.35 per 100 lbs.

Brandam's No. 1 White Lead

In tins, 12 1/2 lb. \$7.50; 25 lb. \$7.00 per 100 lbs.

DOMESTIC VARNISHES

We have handled these varnishes for the past fifteen years and can recommend them to give satisfaction.

Size 1/2 pt. 1 pt. qt. 1/2 gal. gal.
Brown Japan \$.08 \$.14 \$.35 \$.65 \$ 1.10
White Shellac 20 .32 .70 1.25 2.30
Orange Shellac 17 .30 .65 1.15 2.15
Lt. Oil Finish 15 .25 .50 .85 1.75
Batavian Damar 16 .30 .65 1.15 2.15
Elastic Oak 15 .25 .50 .85 1.75
No. 1 Furniture 10 .17 .40 .75 1.30
Lightning Dryer 18 .36 .80 1.40 2.50
Gold Size Japan 15 .27 .55 1.05 2.00
Bronzing Liquid 15 .25 .50 .85 1.75
Best Rubbing Body 25 .45 .70 1.30 2.50
Everlast Floor 25 .45 .85 1.60 3.00
Stove Pipe 15 .25 .45 .80 1.40
Banana Oil 23 .40 .90 1.40 3.25

Nobles & Hoare's Varnishes



We carry a full line of these celebrated varnishes and our stock includes:

Yacht Varnishes.
Carriage Varnishes.
Outside and Inside House Varnishes.
Floor Varnishes.
Best Brunswick Black.

Sizes 1/2 pt., pt., qt., 1/2 gal., gal.

Price list on request.

VARNISH STAINS

A combined stain and varnish for use over old or new floors, woodwork or furniture. They dry quickly with a high finish and are easily applied.

They are furnished in Cherry, Light Oak, Mahogany, Dark Oak, Walnut and Rosewood and imitate the natural woods named.

Size Cans 1 pt. 1 pt. qt. qt.
Each 15c. 25c.

OIL STAINS

For staining new interior woodwork or any work not finished. They dry without a gloss and are used when a "flat" or dull finish is desired.

Size Cans 1 pt. 1 pt. qt. qt.
Each 12c. 20c.

CHINA-LAC

China-Lac is a stain, a varnish and an enamel—all combined. Being transparent it preserves the grain and beauty of the natural wood, at the same time giving splendid color effects.

China-Lac dries with a hard, tough, brilliant and lasting finish and is especially adapted for finishing furniture, floors, scratched woodwork, oilcloth, linoleum, etc. In fact anything about the house that can be finished in either paint or varnish can be made to look bright, fresh and attractive as new through its use.

One point about China-Lac that any woman will appreciate is that it is unaffected by soap and water, and may be washed when necessary without turning white or getting dull.

Furnished in sixteen (16) brilliant, durable colors. See color card.

Gold, No. 5 . . . 25c. Aluminum, No. 5 . . . 15c.
1 Pint—Covers 9 sq. feet, two coats . . . 25c.
1 Pint—Covers 18 sq. feet, two coats . . . 25c.
1 Pint—Covers 38 sq. feet, two coats . . . 40c.
Quarts—Covers 75 sq. feet, two coats . . . 75c.

JAPANESE ENAMEL

Extra High Grade

For Ship, Yacht, House, Hospital and General Painting

Japanese Enamel gives a smooth, china-like surface on woodwork, plastered and board walls, metal, stone, cement, brickwork, etc. It is elastic, sanitary, durable, damp-resisting, non-fading, and rust-preventing; does not crack, chip, peel or blister off, and will resist the action of the sun, frost, heat, cold, sea and water, gases, acids, weather and wind—even under the most exposed conditions.

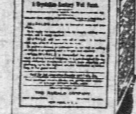
One gallon covers between 70 and 80 square yards on properly prepared work.

Furnished in thirty-four beautiful shades and white at one uniform price. Ask for color card.

Size . . . Tins 1/2 pt. 1 pt. qt. 1/2 gal. gal.
Each . . . 15c. 30c. 50c. 95c. 1.75 3.25 5.00

MURALO, THE PIONEER WALL COATING

Clean, Healthy, Artistic, Durable, Inexpensive and Easily Applied. Does Not Show Laps.



Muralo is prepared in dry powder form and is ready for use as soon as mixed with cold water. It is nature of Kalsomine, but unlike ordinary Kalsomine, it will not rub off, scale or fade. Age improves and hardens it. It can be applied in pure white or in plain tints, and can be stencilled, frescoed, stippled or embossed in relief. A five pound package will cover 40 to 50 square yards of average wall surface, two coats.

We can furnish Muralo in eighteen harmonious tints and white. See color card.

Size package 2 1/2 lbs. 5 lbs.
Each 20c. 40c.

Johnson's Wood Finishes



We carry a very complete stock of these widely advertised and noted Finishes for finishing new or refinished old wood, furniture and floors in the latest and most artistic way.

By the use of Johnson's Wood Dye and other Johnson's Wood Finishes you can make old furniture look like new, rejuvenate shabby floors, and refinish the woodwork to suit your individual taste. It requires no experience whatever to use any of these wood finishing preparations. Anyone can apply them and produce satisfactory results.

In every home there is something continually getting scratched or worn and that needs attention. Suppose you take an inventory of the things Johnson's Wood Finishes could restore to new life and usefulness—and at slight expense—the marred table and ancient looking chair, desk or bookcase, picture frames—moulding—the old refrigerator, the sideboard and what-not.

JOHNSON'S WOOD DYE

For the artistic coloring of all woodwork, furniture and floors, giving the popular shades and effects so much in vogue.

Johnson's Wood Dyes are not a mere stain, but a deep-seated dye that penetrates the wood and brings out the grain.

Put up in wide mouth jars and supplied in the following shades: Light Oak, Dark Oak, Brown Weathered Oak, Green Weathered Oak, Moss Green, Flemish Oak and Brown Flemish Oak. All shades of Johnson's Wood Dye may be lightened by adding alcohol and darkened by adding Flemish Oak Dye, and two or three shades may be mixed together, in this way any desired effect may be procured.

Size 1/2 pt. 1 pt. qt. qt. 1/2 gal. gal.
Each 30c. 50c. 85c.

1/2 gallon of dye covers 350 square feet upon hardwood and 200 square feet on soft wood.

JOHNSON'S PREPARED WAX

In paste form—for polishing all woodwork, floors and furniture, including pianos. May also be used for polishing leather surfaces, such as hand-bags, leather cushions, shoes, etc.

It will not show scratches and heel-marks and produces a beautiful, artistic polish to which dust and dirt will not adhere. One pound is sufficient for 250 square feet.

In Cans 1 lb. 2 lb. 5 lb. 12 1/2 lbs. 25 lbs.
Each 50c.

JOHNSON'S UNDER-LAC

This is a liquid preparation to be applied over Paste Wood Filler or Dye when a higher gloss than a waxed finish is desired. It brightens up old furniture and is particularly good for linoleum and oilcloth, bringing out the pattern and giving a finish as glossy as new.

One gallon is sufficient to cover 500 square feet.
Size 1/2 pt. 1 pt. qt. 1/2 gal. gal.
Each 25c. 40c. 70c. \$1.35 \$2.50

JOHNSON'S FLOOR FINISH, NO. 1

For floors which receive hard treatment and must be frequently scrubbed with soap and water—such as kitchen, pantry, bathroom, store, office and school-room floors.

It penetrates the wood, preserving it and preventing it from becoming soft and grey under constant action of soap and water. It also prevents dirt and grease from being absorbed by the floor.

One gallon covers 600 square feet.

Quart Cans 1 lb. 2 lb. 5 lb. 12 1/2 lbs. 25 lbs.
Each 60c.

JOHNSON'S KLEEN FLOOR

For removing spots, stains, discolorations, water-marks, etc. from all polished floors, stairs and finished surfaces, keeping them in perfect condition.

One-half gallon cleans 350 square feet.

Size 1/2 pt. 1 pt. qt. 1/2 gal. gal.
Each 50c. 90c.

JOHNSON'S ELECTRIC SOLVO

A semi-paste preparation for softening paint, varnish, shellac and other finishes from wood, glass, marble or any surface, so that it may be instantly removed. It is quick and effective in its action and entirely free from any offensive odor. Will not injure the hands or the finest fabrics.

One gallon softens 300 square feet of old finish.
Size Cans 1 lb. 2 lb. 5 lb. 12 1/2 lbs. 25 lbs.
Each 40c. 60c. \$1.20 \$2.10 \$3.75

JOHNSON'S PASTE WOOD FILLER

For filling the grain and pores of all wood, soft and hard. Where a grain filled effect is desired, the dye is applied directly upon the wood and then the Paste Wood Filler over the dye, after which the finish.

This Filler when sent out in paste form should be thinned, with benzine or turpentine before being used and applied with a varnish brush.

Furnished in Natural, Golden Oak, Dark Oak and Antwerp Green. One pound fills 40 square feet.

Size Cans 1 lb. 2 lb. 5 lb. 12 1/2 lbs. 25 lbs.
Each 18c. 36c.

JOHNSON'S CRACK FILLER

In paste form, for filling cracks and crevices in floors. It is much superior to putty for the purpose, as it will not shrink, crack or come out of place.

A pound is ordinarily sufficient for 30 square feet of flooring.

Size Cans 1 lb. 2 lb. 5 lb. 12 1/2 lbs. 25 lbs.
Each 25c. 50c. 90c.

JOHNSON'S POWDERED WAX

For all dancing floors. It is entirely free from dust; will not cake or harden, and gives a perfect dancing surface.

Gold Enamel



For all decorative and gilding purposes.

Can be washed with soap and water.

Per Package . . . 15c. and 20c.

Silver Bronze

Per Package 25c.



GILT EDGE METAL POLISH

For cleaning and polishing brass, copper, tin, zinc, nickel and all kinds of metal.

Will clean quicker, last longer, polish easier than any metal polish on the market.

Size 1/2 pt. 1 pt. qt. 1/2 gal. gal.
Each 25c. 35c. 55c. \$1.00 \$1.75



SILVA PUTZ

Specially prepared for solid and plated silver or gold and fine glassware.

Gives a brilliant lustre quickly—and without scratching.

Glass Jars 8 oz. 16 oz.
Each 25c. 40c.

LIQUID VENEER

Liquid Veneer is undoubtedly the best brightener for furniture that has been brought out. It is simply wonderful how it removes scratches, stains, dirt and dullness from chairs, leather seats, tables, pianos, hardwood floors, metal work, silver and plated ware, picture frames, etc. There is no surface too fine or too costly and no article too cheap to be beautified through its use.

Size Bottles 4 oz. 12 oz. qt.
Each 25c. 50c. \$1.00

Paint, Varnish, Kalsomine and Whitewash Brushes

All our brushes are made by the best manufacturers. Nothing superior made or offered at the price.

Gloss Paint Brushes, White Bristles, Wire Bound.

No. 1-0 2-0
Diameter 1 1/2 1 1/2
Length of Bristles, inches 2 3 3 1/2
Each 30c. 40c.

Oval Chisel Varnish Brushes, White Bristles.

No. 5 10 15 20
Diameter 1 1/2 2 1/2 3 1/2 4 1/2
Length of Bristles, inches 3 4 5 6
Each 60c.

Ivory Chiselled Sash Tools, best French Bristles, Nickel-plated Ferrules. A very handy brush around the house or farm where a small brush is wanted.

Each 10c. 15c. 20c.

Wall or Flat Brushes. A good brush for outside painting, barns, fences, or walls of any kind.

Width, inches 2 1/2 3 3 1/2 4
White Bristles, each 25c. 35c. 45c.
Grey Bristles, each 25c. 30c. 40c. 50c.
Black Bristles, each 55c. 75c.

Kalsomine Brushes, a good brush for Kalsomining fences, basements, buildings, etc.

Width, inches 7 7 1/2 8
Bristles, inches 4 4 1/2 5
Each \$2.15

Whitewash Brushes, made of all white stock, eased with white bristles and metal bound.

Width, inches 7 7 1/2 8
Bristles, inches 2 1/2 3 1/2 4
Each 30c. 35c. 40c.

ABSOLUTE

PROOF SA

DET

Wm. J. Burns Th
Never Had a Stro
Case

SHARP ANSWER
TO G

Talk of Frame-Up and