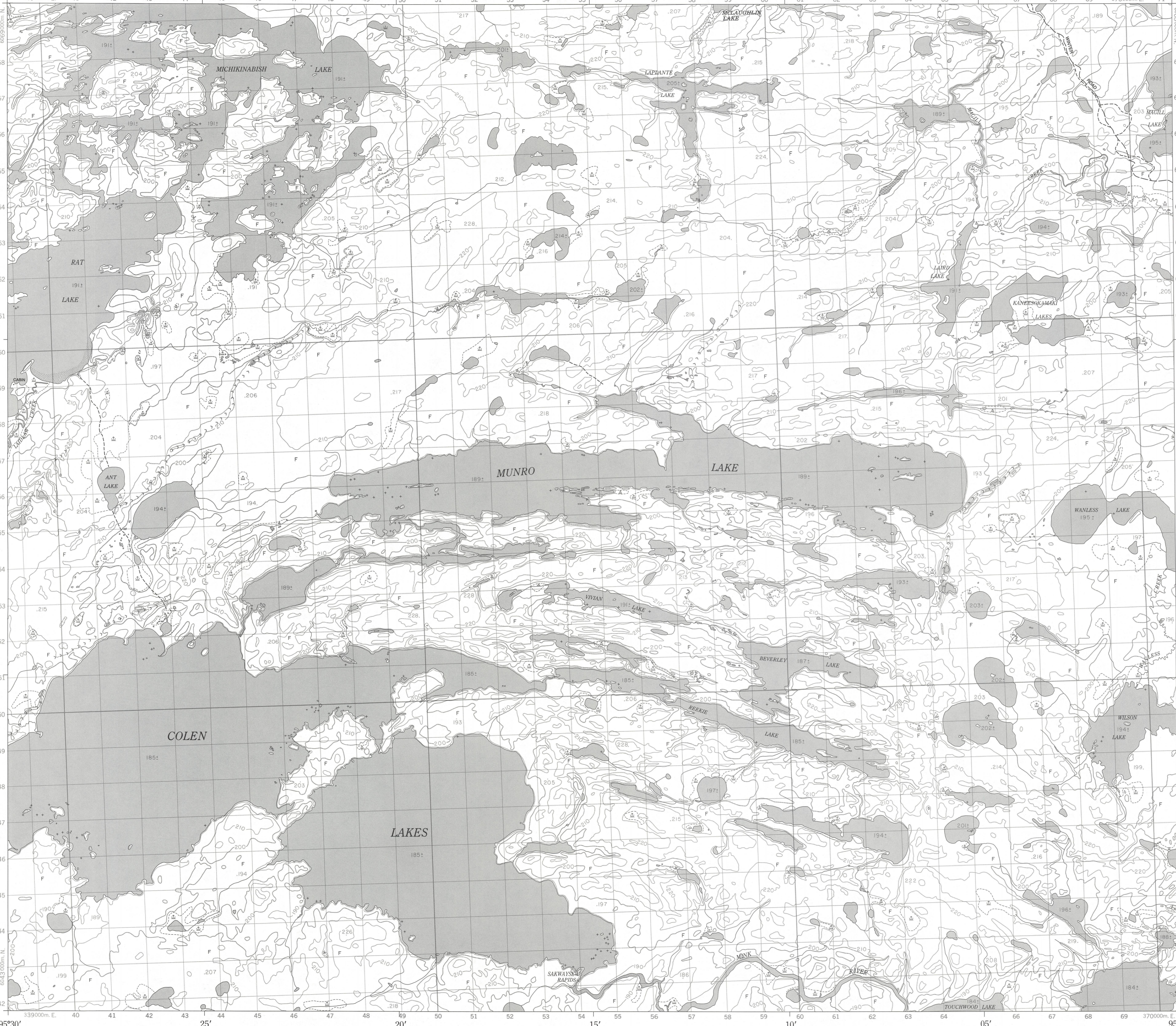


Military users, refer to this map as: Références de cette carte pour usage militaire. SERIES 4701 SÉRIE MAP 53 L/11 CARTE EDITION 1 MCE ÉDITION

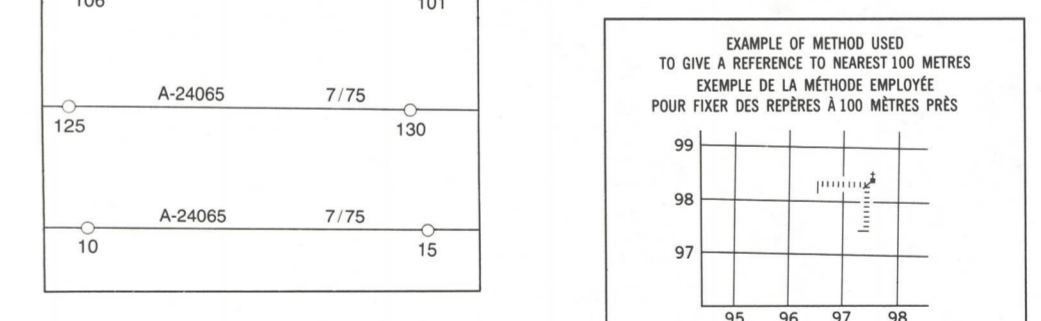
MUNRO LAKE 53 L/11 ÉDITION 1



LEGEND - LÉGENDE table listing symbols for roads, railways, water features, and boundaries.

GLOSSARY - GLOSSAIRE table listing symbols for cabin, marsh, and other features.

PHOTOGRAPHY PHOTOGRAPHIE table with grid coordinates and identification numbers.



REVISION table with columns for CHURCH - ÉGLISE and other reference points.

INDEX TO ADJOINING MAPS table showing adjacent map sheets like 53 L/13, 53 L/14, etc.

CONVERSION SCALE FOR ELEVATIONS table with scales in feet and metres.

PRODUCED BY THE SURVEYS AND MAPPING BRANCH DEPARTMENT OF ENERGY, MINES AND RESOURCES. OTTAWA, PUBLISHED IN 1985.

ELEVATIONS IN METRES ABOVE MEAN SEA LEVEL. CONTOUR INTERVAL... 10 METRES. NORTH AMERICAN DATUM 1927.

MUNRO LAKE MANITOBA. EAST OF PRINCIPAL MERIDIAN EST DU MÉRIDIEN PRINCIPAL. Scale 1:50 000 Échelle.

ALTITUDES EN MÈTRES. ÉQUIDISTANCE DES COURBES... 10 MÈTRES. PROJECTION TRANSVERSE DE MERCATOR.

ÉTABLI PAR LA DIRECTION DES LEVÉS ET DE LA CARTOGRAPHIE, MINISTÈRE DE L'ÉNERGIE, DES MINES ET DES RESSOURCES. OTTAWA, PUBLIÉ EN 1985.