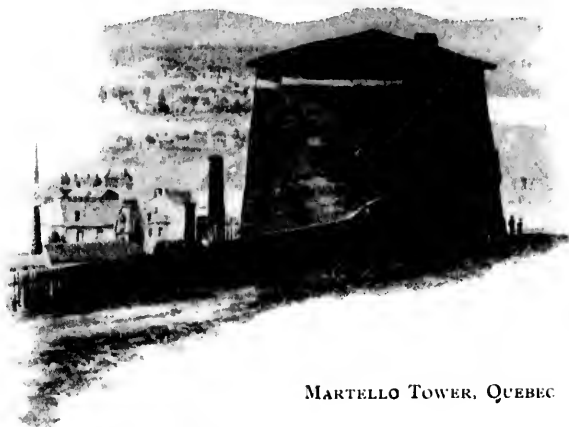


interest to tourists. They stand out boldly on Parliament Hill, overlooking the Ottawa, in all the beauty of seemingly varied architecture. They were erected at a cost of about \$5,000,000. The octagonal-shaped library in rear of the Houses of Parliament is one of the most complete in America. Other objects of interest are Rideau Hall the home of the Governor-General of Canada, Rideau Canal, built in 1827 for military purposes, Major Hill Park, the city buildings, extensive saw-mills, and the timber slides by which the square timber from the Upper Ottawa passes down without damage into the navigable waters below. To go down these slides, as nearly every visitor does, is an exciting and exhilarating experience. Opposite Ottawa is the French city of Hull, and combined they have a population of about 70,000.

Ottawa is reached from Montreal by the Canadian Pacific Railway, whose tracks parallel both banks of the Ottawa River, or by steamer in summer, the railway run being less than three hours by the fast Short Line express.



MARTELLI TOWER, QUEBEC

9555/18^c

799