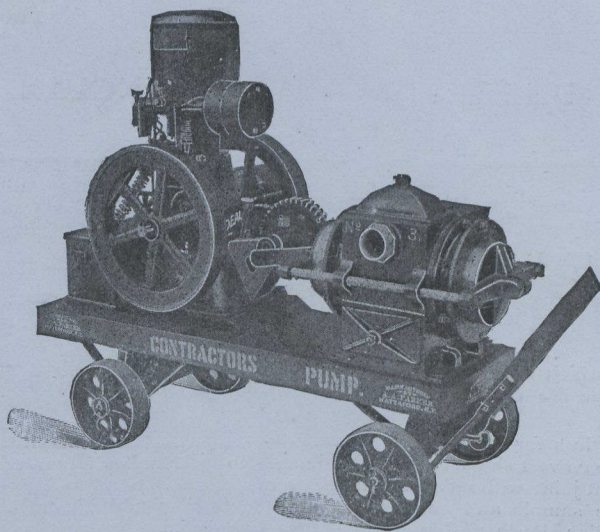


Water, Mud, Grit

THEY ARE ALL THE SAME TO THIS

DOUBLE-ACTING GASOLINE DRIVEN TRENCH PUMP



CAPACITY:

6,000 to 8,000 Gallons
per hour.

WE ALSO HAVE THEM
SINGLE-ACTING

3,000 to 4,000 Gallons
per hour.

**FULL LINE OF MUNICIPAL ROAD
MACHINERY AND SUPPLIES**

SEND FOR CATALOGUE 41

MUSSENS LIMITED

MONTREAL,
318 St. James St.

TORONTO,
73 Victoria St.

COBALT,
Opp. Right of Way Mine

WINNIPEG,
259-261 Stanley St.

CALGARY
121-10th Avenue East

VANCOUVER,
365 Water St.