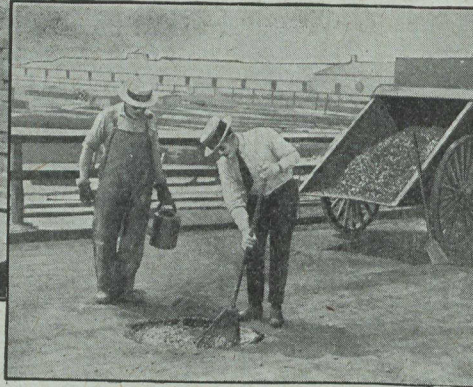
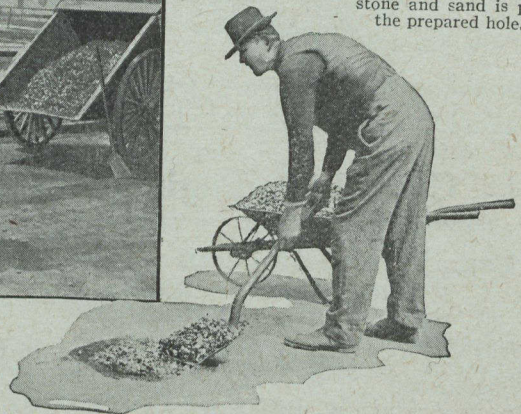


"Tarvia-KP" and stone are turned over by hand until all stones are coated. Then sand is added.

The hole to be patched is cleaned out and the bottom and sides are painted with "Tarvia-KP."



The mixture of "Tarvia-KP" stone and sand is put in the prepared hole.



Tarvia-KP

FOR COLD PATCHING

A Patch in Time Saves Many a Road—

Now is the time to fortify your roads against the ravages of winter. Patch the surface breaks, fill the depressions—have your streets and highways in ship-shape condition before the first snowfall.

For winter, with its alternate freezing and thawing will ruin a road, where a little care now may mean a vast saving in actual dollars later on.

"Tarvia-KP" has an astonishing variety of uses. It is employed in patching macadam, asphalt, bituminous-concrete and cement-concrete roads.

"Tarvia-KP" is a material that can be used for patching at any time of the year—it is as serviceable in winter as in summer, for freezing does not injure it. A batch of the mix can be made today and used weeks hence — in fact, ageing improves it.

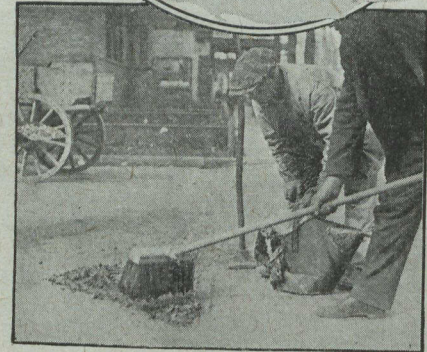
"Tarvia-KP" makes a smooth, perfectly bonded patch—a patch that becomes an integral part of the road itself. A patch that is durable.

There is only one "KP" and that is "Tarvia-KP" patching material made by The Barrett Company.

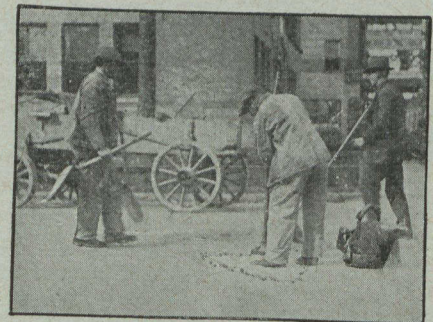
Our nearest office will gladly send you an illustrated manual of instructions showing each step in patching a road with "Tarvia-KP."



The mixture is well tamped and covered with screenings



A seal-coat of 1/2 gallon of "Tarvia-KP" to the square yard is spread over the patch.



Screenings are scattered over the seal-coat and the patch is again tamped.

WINNIPEG, VANCOUVER
HALIFAX, N. S.

The *Barrett* Company
LIMITED

MONTREAL TORONTO
ST. JOHN, N. B.