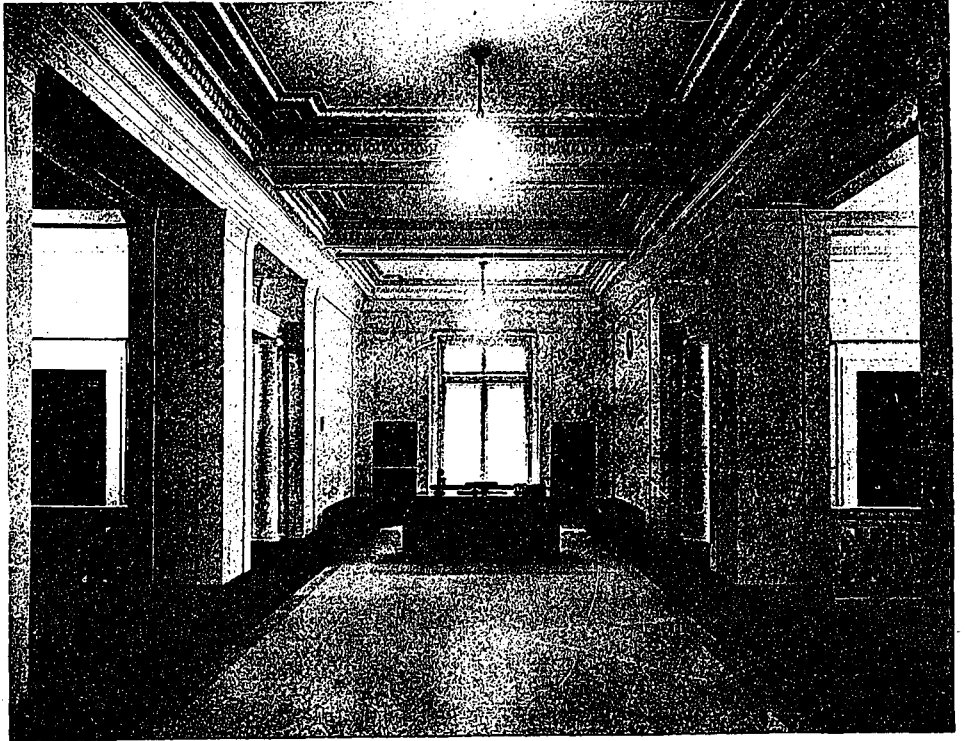
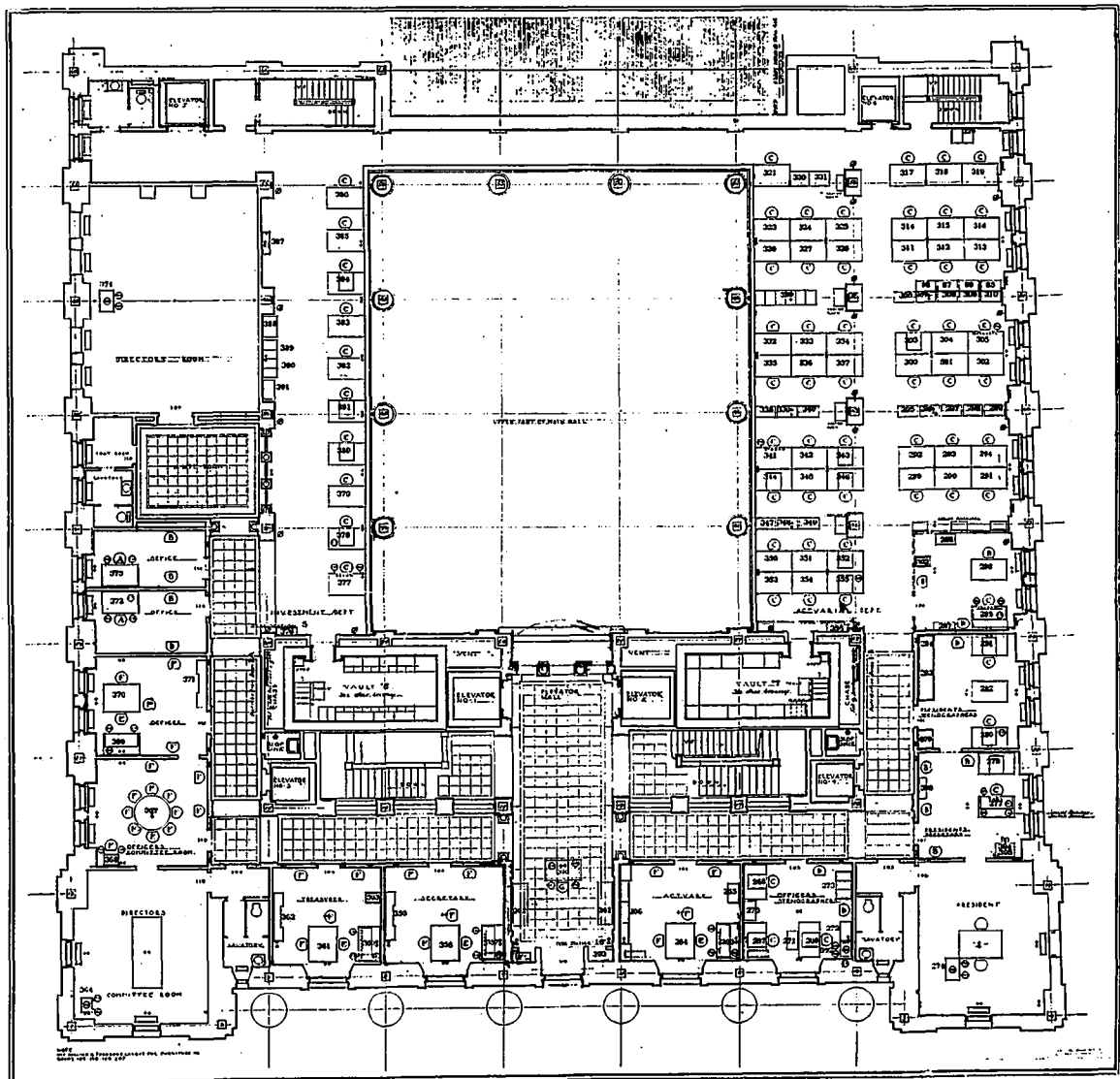


al effect being of a darkish green with a underlying golden tone. It is interesting to note how the two main divisions on the ground floor are linked together in color. In the first place the dark green Sevanto marble which forms the floor border around the entrance hall continues by the elevators and culminates in a rather large square at the opening to the main hall; from which it branches off and encircles the large public area composed of marble slabs two feet square with a deeper shade of pink than the walls. The same rich depth of green is preserved in the counter as well as the columns. Else-



FIRST FLOOR CORRIDOR.



GROUND FLOOR PLAN.