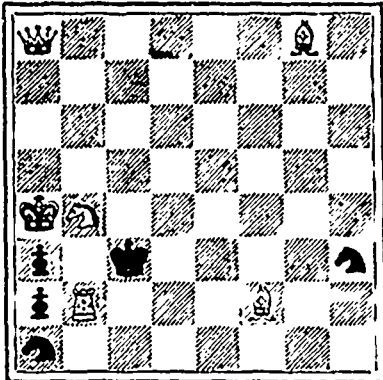


**CHESS.**

The proprietors of THE CRITIC offer two prizes—to consist of books on Chess—to those subscribers who shall send in the greatest number of correct solutions during the current year. No entrance fee required.

Solutions to Problem No. 90 Kt to QB8, and to Problem No. 91B to B3, correctly solved by Mrs. H. Moseley and J. W. Wallace.

**PROBLEM No. 93.**  
BLACK 5 pieces.



WHITE 6 pieces.

White to play and mate in 2 moves

**GAME No. 75.**

Played in the International Tourney.

WHITE BLACK  
Mr. J. W. Miller, Mr. J. W. Shaw,  
Cincinnati, O. Montreal.

- |                 |               |
|-----------------|---------------|
| 1 P to K4       | P to K4       |
| 2 Kt to KB3     | Kt to QB3     |
| 3 B to Kt5      | Kt to KB3     |
| 4 P to Q3       | P to Q3       |
| 5 P to B3       | B to Q2       |
| 6 QKt to Q2     | B to K2       |
| 7 Kt to B sq    | P to QR3      |
| 8 B to R4       | Castles       |
| 9 Kt to Kt3     | P to R3       |
| 10 P to KR3     | KKt to R2     |
| 11 Kt to KB5    | P to QKt4     |
| 12 B to QB2     | B takes Kt    |
| 13 P takes B    | Q to Q2       |
| 14 P to Q4      | P takes P     |
| 15 Kt takes P   | Kt takes Kt   |
| 16 Q takes Kt   | B to B3       |
| 17 Q to Q3      | QR to K sq ch |
| 18 B to K3      | B to Kt4      |
| 19 Castles (KR) | B takes B     |
| 20 P takes B    | R to K4       |
| 21 QR to K sq   | KR to K sq    |
| 22 Q to Q2      | Q to K2       |
| 23 R to B3      | Q to R5       |
| 24 Q to B2      | Q takes Q ch  |
| 25 K takes Q    | Kt to Kt4     |
| 26 R to B4      | Kt to R2      |
| 27 R to K2      | Kt to B3      |
| 28 B to Q3      | Kt to Q4      |
| 29 R to B3      | K to B sq     |
| 30 P to KKt4    | Kt to B3      |
| 31 B to B2      | KR to K2      |
| 32 R to B4      | Kt to Q4      |
| 33 R to B3      | KR to K sq    |

A draw agreed to.

**DRAUGHTS-CHECKERS**

All Checker communications and exchanges should be addressed to W. Forsyth, 36 Grafton Street, Halifax.

The proprietors of THE CRITIC offer two prizes—to consist of books on Checkers—to those subscribers who shall send in the greatest number of correct solutions during the current year. No entrance fee required.

Among the thousands of strangers who came to this city during carnival week, our checker editor was only favored by visits from Ephraim Humphreys, of Trenton, Pictou Co., a lad of 17, and G. O. Forbes Esq. of Shubenacadie. We played three games with each, the results in both cases being alike—Forsyth 1, drawn 2.

We give below the first game played with Mr. Humphreys

**SOLUTION.**

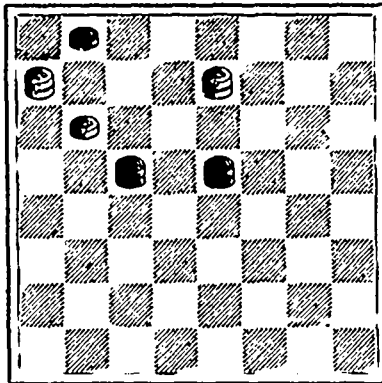
**PROBLEM 127.**—The position was: black men 14, 17, 18, 20, 22, king 29; white men 27, 28, 30, 32, king 9. Black to play and win.

18-23	13 17	31-27	29 25
27 18	22-26	18 22	31-26
14-23	17 22	29-25	25 29
9 13	26-31	22 29	26-22
17-21	22 18	27-31	b. wins.

**PROBLEM No. 129.**

By D. L. McCauchie, Pollockshaw, Scotland.

Black man 1, kings 14, 15.



White man 9, kings 5, 7.

Black to play and win.

This is a gem from the Aberdeen Free Press.

**GAME XXIV.**

"LAIRD AND LADY."

Played August 7th, 1889, between E. Humphreys, Trenton, Pictou Co., and W. Forsyth, Halifax Humphreys' move.

11-15	13-17	28-32	14-17
23 19	32 28	22 17	23 26
8-11	17-21	32-23	6-2
22 17	28 24	14 10	13 6
9-13	12-16	6-15	2-9
17 14	19 12	11 27	22 18
10-17	7-10	5-9	9-13
21 14	14 7	30 26	26 23
4-8	3-28	19-15	17-22
19 10	12 3	27 31	15 10
6-15	28-32	15-10	21-25
26 23	23 14	17 13	10 6
15-18	32-23	10-6	25-30
24 19	25 22	26 23	6 1
11-16	20-24	2-7	22-26
28 24	3 8	23 18	29 25
16-20	23-19	7-10	30-21
19 15	8 11	31 26	23 30
1-6	24-28	10-14	drawn.
24 19	31 27	26 23	

Blank forms, (suitable for both Chess and Checkers), for copying down problems, positions, endings, etc. Fifty for 25c., post free. Small sheets, numbered, and with appropriate headings, for recording games. Twenty five for 15c.

Cable Address, Pittbros., Lon.

**PITT BROS. & CO.**

IMPORTERS OF

**NOVA SCOTIAN APPLES,**  
46 Queen Victoria St.

LONDON, ENG

Consignments solicited and liberal advances made thereon

**WATCHES** FREE. To advertise our house, 10,000 absolutely free. Write and be convinced.  
A. C. ROXBURCK & Co., Toronto, Ont.

**Confederation Life Association.**

A PURELY CANADIAN CO.

**ESTABLISHED 1871. CAPITAL AND ASSETS OVER \$3,500,000.**

Premiums Reduced over 50 Per Cent. by Profits during last 15 Years.

Policy conditions of this Co. have all the latest advantages now obtainable. All Policies are NON-FORFEITABLE after two years, and INDISPUTABLE from any cause after THREE years. Two good reliable men as canvassers wanted.

**F. W. GREEN, Manager,**  
166 Hollis Street, Halifax.

**JOHN SILVER & CO.,**

Importers & Dealers in British, Foreign & Home Manufactured  
**DRY GOODS.**

The Old Stand, 176 & 178 Granville St., and 2 Buckingham St., Halifax, N. S.

ESTABLISHED 1845.

A Splendidly Assorted Stock. New Goods by every Strm.

Ring up TELEPHONE 497 for prompt execution of orders.

**Canadian Enterprise.**

The Ladies' Bureau of Information and the Business Man's Employment Exchange, of 85 Hollis St., was first established in Winnipeg in '74. Since which time offices have been opened in all leading business centres between the oceans. The main object of this institution is to provide Canadian homes for Canadian people, to assist those willing to assist themselves, to protect the employed, to provide a directory of all available situations open with business houses, for the benefit of our patrons. So intensely Canadian is our system that our American offices are managed by Canadians. Circulars fully explaining can be had on application. Telephone order, (134 Prince Wm. St., St. John), 35 Hollis St.

To Machinists,  
Engineers, Plumbers,  
Mill Owners & Miners.

Having made arrangements with a Prominent Brass Manufacturing Firm to handle their goods, we will carry a stock of Brass Goods and Steam Fittings in all branches and be able to fill orders promptly at factory discounts. Cast and

**MALLEABLE IRON FITTINGS!**

Of these we will handle only a first-class American make.

We have also in Stock:  
WROUGHT IRON PIPE,  
MACHINISTS' & MINERS' TOOLS,  
LUBRICATING OILS,  
CRUCIBLES.

Packings of all Descriptions.  
WRITE FOR QUOTATIONS.

**Wm. Stairs, Son & Morrow**

174 to 190 Lower Water St.  
HALIFAX, N. S.

**MARVELOUS MEMORY DISCOVERY.**

Only Genuine System of Memory Training. Four Books Learned in one reading. Mind wandering cured. Every child and adult greatly benefited. Great inducements to Correspondence Classes. Prospectus, with opinions of Dr. Wm. A. Hammond, the world-famed Specialist in Mind Diseases; Daniel Greenleaf Thompson, the great Psychologist; J. M. Buckley, D.D., editor of the Christian Advocate; N. J. Richard Procter, the Scientist; Hon. W. W. Astor, Judge Gibson, Judah F. Boulamia, and others, sent free by Prof. A. LOISELLE, 237 Fifth Ave., N. Y.

Printed by Halifax Printing Co., 161 Hollis Street, Halifax, N. S.

**TAYLOR'S**

NEW STYLE

Double Tongue and Groove  
Fireproof

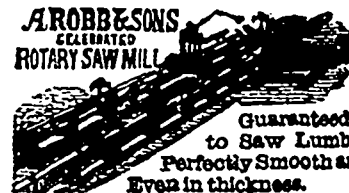
**SAFES.**

Patentees and Sole Manufacturers,

**J. & J. TAYLOR,**

117 & 119 Front St. East,  
TORONTO.

**THE MONARCH BOILER**  
(PATENTED) AND HERCULES ENGINE



Guaranteed to Saw Lumber Perfectly Smooth and Even in thickness. Portable from 6 to 70 horse power. Super portable steam power heretofore produced for strength, durability, compactness, and the ease with which they can be moved. The 70 horse power can be taken over the roughest roads, or into the forest, and set up as easily and quickly as an ordinary 20 horse power portable engine, and as firm as a brick-set stationary engine. Engines and boilers of every size and description. Rotary Saw Mills, Shingle and Lathe machinery, Law Grinders, Planers, etc. Mill machinery and supplies of every description. Every boiler insured against explosion by the Boiler Insurance & Inspection Co. of Canada. Write for circulars.  
A ROBB & SONS, Amherst Foundry & Machine Works, Amherst, N.S. ESTABLISHED OVER 40 YEARS.