

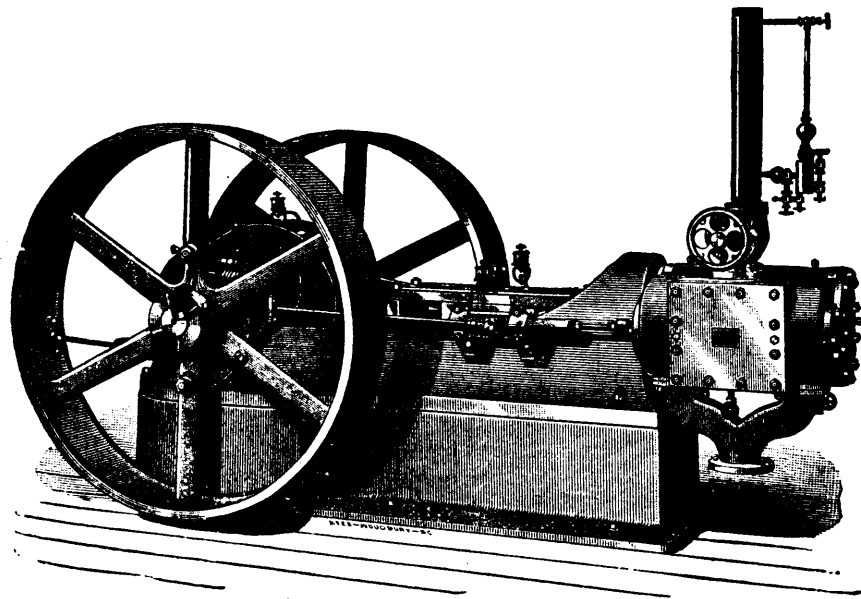
THE CANADIAN LOCOMOTIVE & ENGINE CO., Ltd.
KINGSTON, + ONTARIO.

MANUFACTURERS OF

Locomotive, Marine & Stationary Engines.
BOILERS OF ALL DESCRIPTIONS.

Sole Licensees and Manufacturers for Canada of *Armington & Sims' High Speed Engines*, The "Cycle" Gas Engine, Atkinson's Patent, The "Hazelton" Boiler.

DESCRIPTIVE CATALOGUES OF THE ABOVE ON APPLICATION.



ARMINGTON AND SIMS' HIGH SPEED ENGINE FOR ELECTRIC LIGHT PLANT, &C.

NOTICE.

The Canadian Locomotive & Engine Co., Limited, of Kingston, Ontario, have the Exclusive License for building our Improved Patent High Speed Engine for the Dominion of Canada, and are furnished by us with Drawings of our Latest Improvements.

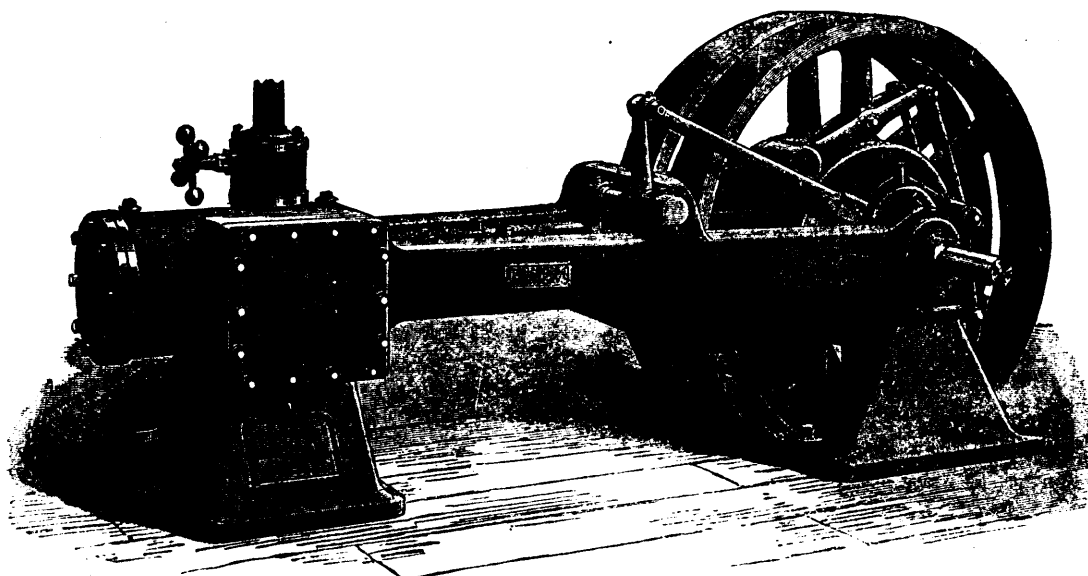
(Signed),

ARMINGTON & SIMS.

PROVIDENCE, R.I., Nov. 18, 1889.

The Straight Line Engine

Single and Double Valve, and Compound. Thirty to Two Hundred and Fifty H.P.



Williams & Potter, Gen'l Agents,

15 Cortlandt Street,

NEW YORK CITY, U.S.A.