

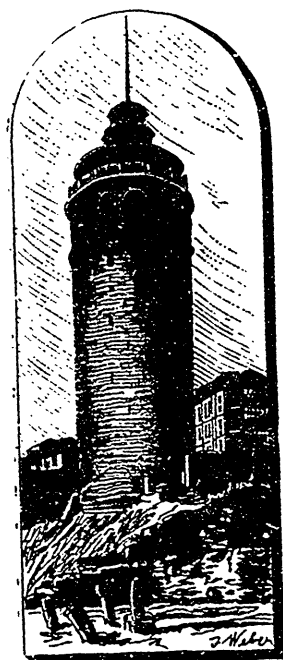
# THE Methodist Magazine.

DECEMBER, 1892.

## THE CITY OF THE SULTAN.

BY THE EDITOR.

### II.



GENOESE TOWER, GALATA.

ONE of the most striking features of the Galata suburb is its lofty and massive tower of ancient Genoese construction on which a watch is constantly kept to give the alarm in case of fire. One would imagine that a telephone or telegraph would be arranged for communicating intelligence to the fire station, but instead of that, when a fire occurs the watchman slides down a long rope through a well in the interior of the tower to the ground. The view from the summit was superb. Flashing to and fro like shuttles weaving a web of commerce were fifty steamers, large and small, and twenty-four ironclad warships lay moored in the harbour below. The bold and majestic sweep of the Golden Horn, the deep blue Bosphorus, the Sweet Waters of Europe, the distant green Bythinian hills, and the crowded triple city at our feet, was wonderfully impressive.

Near the Mosque of Saint Sophia is the Mosque of Achmed, the only one in the Ottoman Empire which has six minarets. These with the swelling dome which they surround, relieved against the bright blue sky, make one of the most picturesque architectural groups in the world. More beautiful still is the Mosque of Sulieman