

Cedar Poles

FROM
"British Columbia"

The strongest, straightest and soundest pole that grows in the "WORLD."

We can ship them East as far as Quebec and compete with Eastern poles-40 ft. and longer.

In Ontario we can compete only on 35ft. poles and longer.

In Manitoba—30 ft. and longer.

In Alberta and Saskatchewan we are "IT" on all lengths.

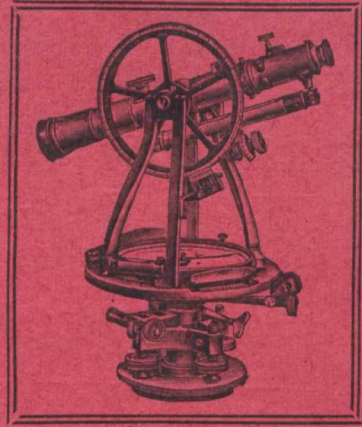
Don't be afraid of them. They are the leading pole for City and Power line construction.

Yards on C.P. Railroad in British Columbia, Kootenay District. They are thoroughly seasoned.

We name delivered prices **always** and guarantee immediate shipment.

Write for carload prices on our **Oregon Fir Cross-Arms.**

The Lindsley Brothers Co.
Spokane, Washington



K & E Engineering Instruments

The use of K & E INSTRUMENTS on nearly every important engineering enterprise is convincing proof of their superior design and high quality of material, workmanship and finish.

When in the market for a new outfit we will be pleased to give full particulars as to our instruments best suited for your requirements.

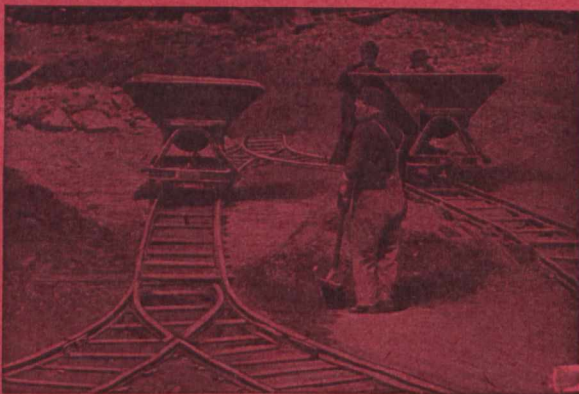
Every requisite of the engineer for field or office.
Our complete catalog on request.

KEUFFEL & ESSER CO.

MONTREAL, 252 Notre Dame St. West
127 Fulton Street General Office & Factories
NEW YORK HOBOKEN, N.J.
St. Louis, 813 Locust St. Chicago, Ill. East Madison St.
San Francisco, 48-50 Second Street

Mathematical and Surveying Instruments
Drawing Materials Measuring Tapes

Portable Railways



KOPPEL STEEL CARS

IN CONJUNCTION WITH

Koppel Portable Track Systems

are labor savers and money makers. Practically imperishable, easily handled and readily removed to any location; are best adapted to any and all conditions. For further information write for our illustrated Booklet D-34.

Arthur **KOPPEL** Company

30 CHURCH STREET, NEW YORK, N.Y.

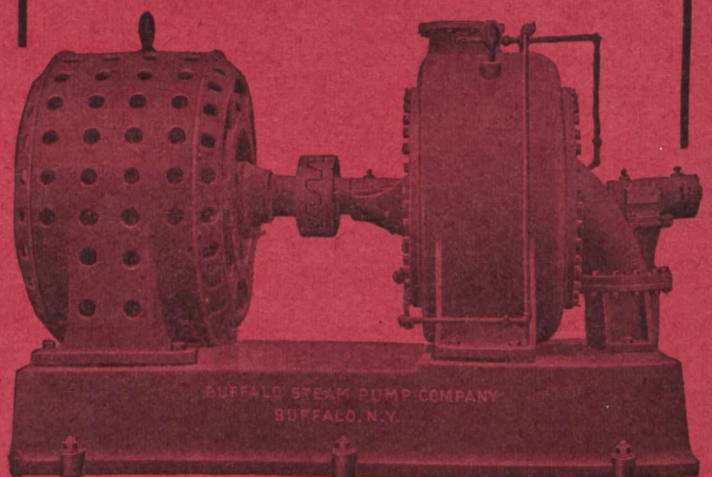
LARGE STOCK CARRIED IN

New York, Koppel, Chicago, San Francisco, Etc.

BUFFALO PUMPS

STEAM-POWER

CENTRIFUGAL-TURBINE



14-inch Two Stage Turbine Pump operating against 400 ft. head, and delivering 6000 Gals. per min. After one year's use this Pump developed 70% efficiency.

Write for Catalog 187 E.C.

CANADIAN-BUFFALO FORGE CO.
MONTREAL and TORONTO ^{Limited}