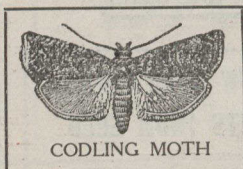


Spray for Gain



BY USING
**GRASSELLI'S
ARSENATE
—OF LEAD—**

DESTROYS ALL LEAF-EATING INSECTS

- ☞ To destroy SAN JOSE SCALE and all scale insects, use GRASSELLI'S LIME-SULPHUR SOLUTION.
- ☞ To control FUNGOUS DISEASES use GRASSELLI'S BORDEAUX MIXTURE.
- ☞ If interested in an insecticide and fungicide combined in one article, use GRASSELLI'S BORDEAUX-LEAD ARSENATE MIXTURE.
- ☞ Prices and information gladly furnished. Write any of our offices for nearest CANADIAN DISTRIBUTOR.

THE GRASSELLI CHEMICAL CO.

MAIN OFFICE - CLEVELAND, O.
NEW YORK, N.Y. BOSTON, MASS.
60 Wall Street 90 Commercial Wharf

DETROIT, MICH. ST. LOUIS, MO.
CHICAGO, ILL. 117 Michigan Street
AND IN OTHER PRINCIPAL CITIES 112 Ferry Street

PROTECT YOUR CROPS BY SPRAYING

VREELAND'S ELECTRO ARSENATE OF LEAD

HAS NO EQUAL

Spray your Orchard and Field Crops with the Strongest and Safest Arsenical Insecticide

25 % STRONGER

Than the Best Other Makes. It won't burn.

The average per cent. of Arsenic and Water is printed on the Label—20 % As_2O_5 - 40 % Water

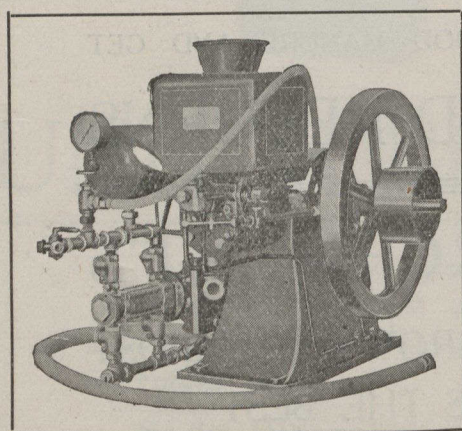
**RECOMMENDED BY
THE BEST AUTHORITIES**

Kills Potato Bugs, Codling Moth, Tussock Moth, Canker Worm, Elm Leaf Beetle, Tobacco Worm, and all other Leaf Eating Insects

The Vreeland Chemical Co.
LITTLE FALLS - NEW JERSEY

NATIONAL DRUG AND CHEM. CO.
CANADIAN AGENTS, TORONTO

WALLACE "NEW PEERLESS" Engine Power Sprayer



A high grade, WATER-COOLED ENGINE without the objectionable cooling tank and appurtenances.

Wallace famous all-brass pump and connections.

Compact, strong, durable, and has all the trouble, delays and after expensiveness left out.

It will put up a 200 lbs. pressure on all the nozzles required. Your cash refunded if not found as represented.

"I am well pleased with the Wallace 'New Peerless' engine sprayer purchased from you last spring; have had no trouble with it from the first day, have tested it over some very rough ground, and have always had strong pressure on 8 nozzles.

Since last fall, I have used it to run a large ensilage cutter, and it has given plenty of power and never missed a spark.

I do not think there is anything on the market to-day that is equal to it for spraying and other work on the farm where power is required.

Grimsby, Feb., /09.

(Signed) S. A. BONHAM.

NOTE.—On this engine Mr. Bonham replaced its 6 ins. band wheel with an 18 ins., and put a 10 ins. wheel in place of the large band wheel on the ensilage cutter. This action more than doubled the demand on this engine which is rated at only 2 h.p. You can not get anything like such satisfactory results out of 9/10ths of the engines that are represented as capable of doing both your spraying and farm power work. The Wallace "NEW PEERLESS" actually does it. Get one and be convinced and satisfied.

I also supply all kinds and sizes of the famous Hardie hand pumps which are rapidly growing in favor wherever known. They are now being bought by many who have had enough of trouble and delay with other U.S. and Canadian makes. They are by far the least expensive in the long run.

A trial purchase will convince every unprejudiced orchardist.

Send in your early inquiries, and include "Target Brand" Scale Destroyer, Arsenate of Lead, Ready Bordeaux Weed Killer, Formaldehyde, etc.

W. H. Brand, - - Jordan Station, Ont.