



Foreign Exchange

The widespread organization and ample facilities of the Bank of Montreal enable it to quote close rates on American, English, and all foreign exchanges.

By means of its private wire connections and Foreign Exchange Department, the Bank is in constant connection with central exchange markets.

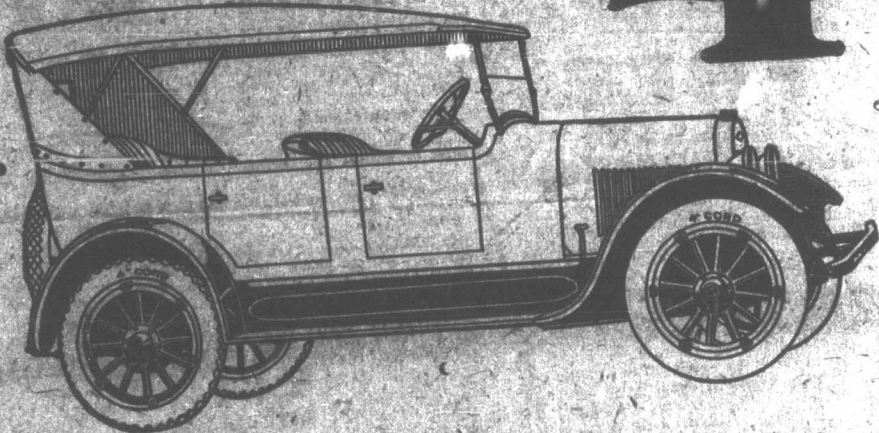
BANK OF MONTREAL

ESTABLISHED MORE THAN 100 YEARS

TOTAL ASSETS IN EXCESS OF \$500,000,000

Hartland Branch: C. S. BAKER, Manager.

Announcing the NEW McLAUGHLIN-BUICK MASTER 4



Here is a Thoroughbred Master Four Completing the Famed McLaughlin-Buick Line

The new Four-Cylinder McLaughlin-Buick, here announced, is a thoroughbred—a pedigreed car well worthy of its name. Down to the very last detail, this new model possesses every quality of enduring serviceability, complete comfort, and distinctive appearance that have always characterized McLaughlin automobiles.

The advent of this new Master Four makes the McLaughlin-Buick 1922 line complete. It offers to purchasers of a car of this size all the quality and service that go to make up the name McLaughlin.

The McLaughlin-Buick Valve-in-Head Engine—A Power Plant That Has Proved Itself.

The engine, of course, is of the time-tested McLaughlin-Buick Valve-in-Head type. The year-after-year concentration of McLaughlin-Buick engineering skill and experience in building Valve-in-Head motors assure the highest standard of performance obtainable to-day.

Every other unit is of a quality equal to the power plant. The whole assembly constitutes a perfectly

Cord Tires Standard Equipment on all Models.

See us for Specifications and Delivery Dates.

22-34 Special Three Passenger Roadster

22-35 Special Five Passenger Touring

22-36 Three Passenger Coupe

22-37 Five Passenger Sedan

See this Car at the Toronto Exhibition or the nearest McLaughlin Showroom.

McLAUGHLIN MOTOR CAR COMPANY

Division of General Motors of Canada Limited.

Dealers Everywhere

OSHAWA, ONT.

Branches in Leading Cities

F. O. CREIGHTON, Distributor, WOODSTOCK, N.B.

RUM RUNNERS CAPTURED IN FIGHT AT LIMESTONE, ME.

Are Charged With Smuggling Contraband Liquor Into Maine—Are Held in Heavy Jail—Prisoners Put up a Fight on the Road During Which a Shot Was Fired.

A resident of Limestone village and two residents of Victoria county are the latest to fall into the hands of the United States authorities engaged in running down smugglers of contraband liquor from the province, of whom there are said to be scores at work at the present time. As the result of the operations of the drag-net, Levi Coty of Limestone, Ben Condon and son Fred are out on heavy bail and Deputy Sheriffs A. C. Leighton of Sweden, and R. H. Whitney of Houlton, are receiving the congratulations of the community and nursing injuries received in a stiff fight. Coty was released on \$500, Ben Condon on \$3,000 and Fred Condon on \$2,000 bail.

It was late at night when the sheriffs, concealed beside the roadside, on the Limestone road about fifty rods from the boundary, saw the headlights of an automobile come across the line from the direction of the Condon place.

Condon has been known to the sheriffs and suspected that a rum runner was coming the officers jumped into the centre of the road before the on-coming automobile. The car came to a halt, and in a second Levi Coty was placed under arrest.

Just at this juncture Ben and Fred Condon came running across the line, according to the officers, who charge that Condon and his son used abusive language, and Deputy Sheriff Leighton ordered their arrest.

Leighton had Coty, so Whitney and Larson caught Ben Condon but Fred fled, followed by a revolver shot from Larson's pistol.

Ben Condon put up a fight with Whitney on the way to the machine, but he was finally placed inside with handcuffs on his wrists.

Meanwhile Fred Condon, according to the officers, had come up and was pelting rocks at Whitney and Larson. Whitney was struck on the wrist by a rock and Larson was injured in the back. Both were later treated by Dr. Huggard at Limestone.

Finally, Fred Condon retreated across the line. The car containing the officers and prisoners started up. Ben Condon became violent. He swung at Larson who was driving and struck him a blow in the face with his handcuffs. Larson nearly ditched the car but managed to get it back on the road.

Fred Condon was captured the following day at Limestone where the trio were arraigned and released on bail.

CENTREVILLE GIRL WEDS IN THE WEST

The home of Mr. and Mrs. G. F. H. Long was the scene of a quiet but pretty wedding on Sept. 21, when Miss Route Adair, daughter of Chas. A. Long of Centreville was united in marriage to Leon Albert Shearer. The ceremony was performed by the Rev. W. H. Ellis in the presence of a few intimate friends. The wedding-march being beautifully rendered by Miss Helena Kerr.

The bride, who was given away by her brother, wore a travelling suit of brown embroidered velour with hat to match and carried a bouquet of opelia roses. After the ceremony a dainty luncheon was served by Mrs. Long, assisted by Miss Bessie Sprague.

The bridal couple left on the afternoon train for a few days at Banff and Edmonton, after which they will make their home at Waterhole in the Peace River District, where Mr. Shearer is Manager of the Union Bank of Canada.

McLAUGHLIN BRINGS OUT A NEW MASTER FOUR

Announcement is made of the presentation before the motoring public of a new four-cylinder McLaughlin-Buick line. There are four models in the line, including roadster and five passenger touring in the open cars, and three passenger coupe and five passenger sedan in the closed models.

Inasmuch as it has been known in the automobile trade for some time that the McLaughlin Motor Car Co. purposes adding a line of fours, considerable interest attaches to the specifications covering the new models. In motor construction McLaughlin has adhered to the valve-in-head principle with which its name has been so prominently connected for years. The cylinder here is 3 and 3-8 inches with stroke of 4 and 3-4 inches. Teh motor develops between 35 and 40 brake horsepower and the road tests have shown that the power plant will deliver up to 60 miles an hour with ease. Features of motor construction are the large three-bearing crankshaft and 12 inch long connecting rods, extra long rods being provided to reduce vibration to a minimum. A circulating splash oiling system gives automatic lubrication throughout. Another important feature is the automatic carburetor heat control through which ideal vaporizing conditions are obtained.

The Transmission is of the selective sliding gear type, three speeds for ward and one reverse. The universal joint is of standard McLaughlin-Buick construction being virtually an integral part of the transmission and automatically lubricated from the transmission. The clutch is of the multiple disc dry plate type, built in exact accordance with the principles which have guided clutch construction in McLaughlin Master sizes. All moving parts are enclosed.

Front axle of the four-cylinder car is an I-beam forging. The rear axle is three-quarter floating type, all the weight of the car is being carried on the axle types and only driving torque and steadying of the wheels being taken by the axle driving shafts. The third member is of standard McLaughlin-Buick type of construction, designed successfully to eliminate all twisting or weaving in the rear axle. Gear ratio of the rear axle on high speed is 4 and 2-3 to 1.

Wheelbase of all models is 109 inches. The spring suspension is designed to give fine riding qualities to a car of this wheelbase. The front springs, semi-elliptic type, are 36 inches long, and the rear springs, also semi-elliptic type are 55 1/2 inches long. Cord tires are standard equipment on all models. These tires, which are 31x4, are the first straight side cord tires in this size ever manufactured and were built especially to meet McLaughlin-Buick requirements for the new four-cylinder cars. The tires have been adopted as standard size. The chassis is lubricated with the high pressure Alomite system. Delco starting and lighting system is standard equipment. All models are complete with tire carrier, extra rim and non-glare headlight lenses. Shipping weights of the four models

Veteran of Civil War Still Hale and Hearty



GEORGE D. SHAW, Springfield, Mass.

"To say that I feel twenty-five years younger, twenty-five years healthier and twenty-five years stronger express what Tanlac has done for me better than any other way I can put it," said George D. Shaw, veteran of the Civil War, who now lives at 321 Walnut street, Springfield, Mass.

"I am now seventy-eight years old and I don't hesitate to say I have never known a medicine to equal Tanlac. For fifteen years I was subject to attacks of indigestion that were so bad at times I would have to lay up for a week or two. For a long time I lived on crackers and milk alone as nothing else agreed with me.

"When I started on Tanlac I weighed only one hundred and seventeen pounds and my days were thought to be numbered. I've been so wonder-

fully built up, I now weigh one hundred and forty-three pounds and my stomach is as sound as a dollar. In fact, I believe I could eat the old army rations again without it hurting me in the least.

"I never miss a chance of saying a good word for Tanlac and I would like to urge the boys of the 'Sixties' like to urge the boys of the 'Sixties' who are not feeling right to give it a trial, for I am sure it would put them in line again just as it has me. For a man of my age to have no physical ailment, to be well and strong and enjoy life as he did twenty-five years ago, is certainly something to be thankful for and there is nothing too good I can say for Tanlac."

Tanlac is sold in Hartland by Estey & Curtie Co., Ltd., and by leading druggists everywhere.

are Roadster, 2310 pounds; touring cars, 2380 pounds; coupe, 2430 pounds; sedan 2650 pounds. In adding the four-cylinder models to the six-cylinder cars now produced, McLaughlin executives feel they have

rounded out their line and constructed cars which are in every respect worthy of the high reputation of "Canada's Standard Car."

Deliveries are scheduled for immediate shipment.

WRIGLEY'S

"After Every Meal"



Next time you want to concentrate on a piece of work just slip a stick of WRIGLEY'S between your teeth.

It's a wonderful help in daily tasks — and sports as well.



The Flavor Lasts

Hazards disappear and hard places come easy, for WRIGLEY'S gives you comfort and poise—it adds the zest that means success.

A great deal for 5c

SEALED TIGHT KEPT RIGHT