

Bone Spavin

No matter how old the blemish, how lame the horse, or how many doctors have tried and failed, use **Fleming's Spavin and Ringbone Paste**. Use it under our guarantee—your money refunded if it doesn't make the horse go sound. Most cases cured by a single 45-minute application—occasionally two required. Cures Bone Spavin, Ringbone and Sidebone, new and old cases alike. Write for detailed information and a free copy of **Fleming's Vest-Pocket Veterinary Adviser**. Ninety-six pages, durably bound, indexed and illustrated. Covers over one hundred veterinary subjects. Read this book before you treat any kind of lameness in horses.

FLEMING BROS., Chemists
79 Church Street Toronto, Ont.



Farmers Make Money IN YOUR SPARE TIME

WE want men in every vicinity to represent Dr. J. M. Stewart's Veterinary Remedies, the oldest and best known line on the market. Always sold in stores, but now selling direct to the consumer. Every farmer in the county a customer. An established line that repeats. Big money for a man spending all or part of his time selling these remedies. No capital required. Write to-day for full particulars.

Palmer Medical Co., Ltd., Windsor, Ont.

Cure your Cows of **CAKED UDDERS** with **Douglas' Egyptian Liniment**

For Sale by all Dealers. Free Sample on Request.

Douglas & Co., Napanee, Ontario

FOR SALE CLYDESDALE STALLION Golden Ray (11886) (15655).
Dam—Islay Queen (23833); by Loch Sloigh (11398), by Hiawatha (10067), by Prince Robert (7135), by Prince of Wales (673).
Sire—Golden Chief (13011), by Fickle Fashion (10546), by Earl of Knockdon (10190), by Prince Alexander (8899), by Prince of Wales (673).
Will be sold reasonably, as we are quitting the stallion business; guaranteed sound and sure foal getter; enrolled and inspected; can be seen at John Rawlings' Farm, Forest, Ontario.
McKinley & Rawlings, Props.
Apply to: JOHN RAWLINGS, Forest, Ont.

CLYDESDALE STALLION FOR SALE
Keir Jasper No. 11908 (15669) by Baron Cedric. This is a grand light bay, 8 years running up to about a ton, magnificent body and a fine old standing horse right through. Guaranteed a sure foal getter, has left a beautiful lot this District, has Enrolment Board's certificate of soundness; selling because closing out stallion business. A bargain for quick sale. Also grand Hackney, Filgrave Royal John, first prize the Toronto Horse Show, 1911.
A. C. HARDY.
Avondale Farm, Brockville, Ont.

Clydesdale, Percheron French - Coach and Hackney Stallions

bought, sold and exchanged.
HENRY M. DOUGLAS & COMPANY
Queen's Hotel MEAFORD, ONT.

Dr. Bell's Veterinary Medical Wonder men who will give the Wonder a fair trial. Guaranteed for inflammation of the Lungs, Bowels, Kidneys, Fevers, Distempers, etc. Send 10 cents for mailing, packing, etc. Agents wanted. Write address plainly. **Dr. Bell, V.S., Kingston, Ont.**

For Sale—HACKNEY STALLION Golden Jubilee; see Jubilee Chief, color brown, 12 years, sure foal getter, very handsome and sure driver, and a respected seller as my son has come to the farm. I can't go on with trade for cows. Apply **Geo. Grav, R. No. 2, Mossley, Ont.**

Please mention "The Farmer's Advocate."

Questions and Answers. Veterinary.

Lame Colt.

About two months ago a two-year-old Percheron stallion went extremely lame on one hind leg while outside with other horses. The trouble seemed to be in the hock. The pain was intense. We treated it, and he became lame on the other hind leg, and then on the near fore leg. We then called our veterinarian in and he treated him until he had regained his normal condition. After a short time he dropped back to his former state. We have been using liniment externally and administering saltpetre, nitre, and condition powders, but he is not improving. At present he is severely lame with intense pain in the tendons of his left shoulder.

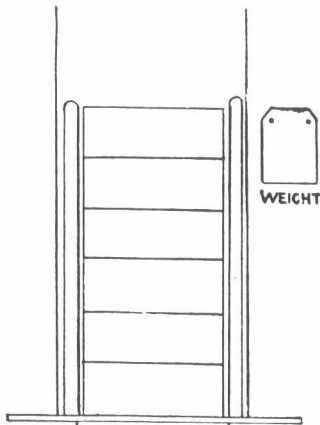
Ans.—This appears to be a very peculiar case, and without more minute details we are unable to diagnose. We do not know just what you mean by "the tendons of the shoulder." Your veterinarian appears to understand the case. At least, it yielded to his treatment during the first attack. Of course he has a much better opportunity to diagnose than one who has not seen the patient, and we would not presume to venture an opinion and prescribe in the face of the fact. It might be wise to ask for a consultation, which, of course, will please the veterinarian in attendance.

Miscellaneous.

A Dumb Waiter.

Would you kindly publish in your valuable paper, full directions for making a dumb-waiter?

Ans.—The following plan of a dumb-waiter has come to us from one who installed it in a new house: This waiter

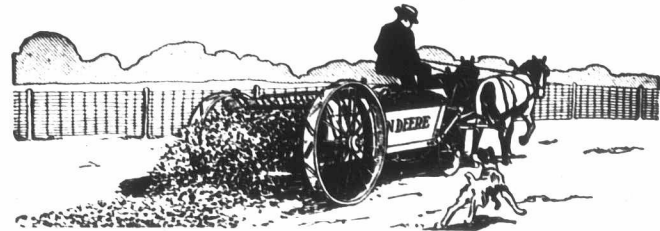


Sketch of a dumb-waiter.

is 6 feet high by 1½ feet wide, and the shelves are 14 inches back. The top of the waiter forms the floor when down, and the bottom forms the floor when up. There are four little, common, window-sash pulleys at the top of boxing of waiter, two at each side, just seven inches apart, to match the holes in weights, and two ropes fastened to waiter and through two pulleys on one side and then down to the one weight, and the same fixture on the other side. If the two weights, weighing 90 pounds, are too heavy for the amount on waiter, it is easy to put more weight on the waiter to make it work easy. The ropes go through the top shelf, and are tacked to the inside of waiter. Weights are 45 pounds each, 12 x 10 inches, and 2 inches thick; holes for rope about 7 inches apart. Perhaps readers may have some improvement on this plan. Their ideas would be valuable in "The Farmer's Advocate."

Attention is called to the advertisement of The Times Book Club, of London, England, in this issue. This great clearance sale should induce readers to buy

John Deere Implements



The Spreader with the Beater on the Axle The John Deere Spreader

The beater—the business part of a spreader—and all its driving parts, are mounted on the rear axle. That is why the John Deere is the simplest, easiest running and most efficient manure spreader.

Here is what the beater on the axle means to you:

1st.—No clutches to give trouble.
2nd.—No chains to break or get out of line.

3rd.—Less than half the parts

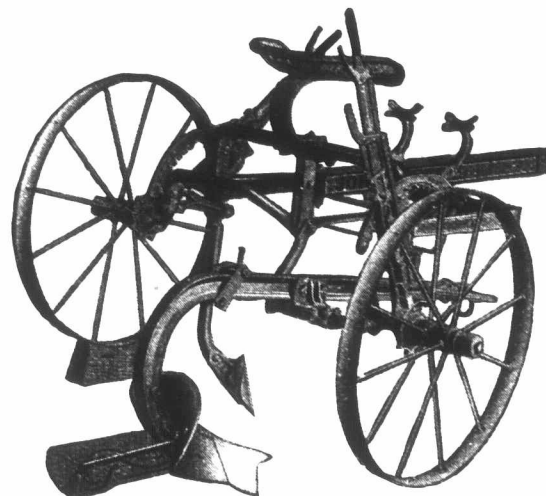
heretofore used on the simplest spreader—some two hundred parts are done away with.

4th.—Manure not thrown on the axle—straw cannot wind around it.

5th.—You get big drive wheels and a low-down spreader, without stub axles—traction and strength.

6th.—Drive wheels back out of the way when loading—you see where you place each forkful.

7th.—Only hip high—easy to load.



John Deere One-Way Plow

The plow with the auto foot frame shift. This feature insures uniform plowing on hillsides or level land and in irregular fields. Full width furrow obtained under all such conditions. Team relieved of all side strain.

Auto foot shift is easy to operate. A slight foot pressure swings frame and moves plow as desired.

A real power lift plow. Slight pressure of foot causes lug to engage in ratchet in the hub and forward movement of horses raises the bottom.

High lift—plow easily transported over rough roads. Easily backed and turned.

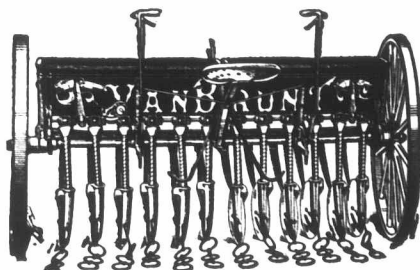
Wide bearing base permits use of wide or narrow cutting bottoms and prevents plow from tipping on hillsides.

Van Brunt Single Disc Grain Drill

No Seed Wasted—All the Field Sown. Van Brunt Drills have an adjustable gate force feed which compels an even, continuous flow of seed from each seed cup without bunching or cracking the seed. It cannot choke up.

The seed beats the dirt. Individually adjustable pressure springs can be made to force discs to cut furrows of even depth. Seed is conducted from hopper to furrow opener by metal tubes and there protected from dirt until it reaches bottom of furrow. All the grain is up and ready for harvest at the same time.

Van Brunt Drills do not clog up, even in trashy soil, mud or gumbo. Spring steel scrapers keep discs absolutely clean. Disc bearings guaranteed to last lifetime of drill.



Grass seeder attachment can be furnished for any Van Brunt Drill. It will sow broadcast or drill, as desired.

The Accurate "Natural Drop" Corn Planter

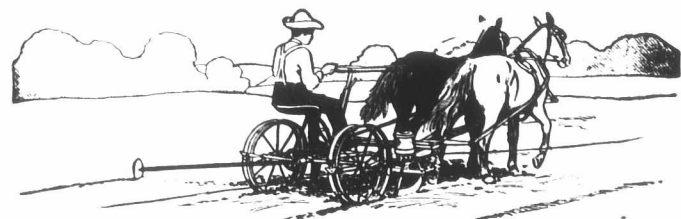
The John Deere No. 999 plants 2, 3 or 4 kernels as desired. You merely shift a foot lever. Quick change hilling to drilling, and also in varying drilling distances. Its corn plates all have 16 cells.

Accurate, because surface of hopper bottom and openings to seed cells are oblique or sloping. Kernels naturally move toward and fill

cells rapidly. Better than any other method because more accurate.

Enclosed gear case, oil tight, dust proof. Gears always in mesh and not under severe strain. As perfect a driving mechanism as that used on automobiles.

Easily detachable runners, simplified check-heads, disc marker without rope and underhook reel are also improvements you will appreciate.



Don't Pay Your Hired Man Extra Wages

Poor tools cut down his efficiency. Use good judgment by buying from a man who has an established reputation for high quality implements—your nearest John Deere Dealer.

John Deere Plow Co. of Welland, Limited
Toronto, Ontario

CLYDESDALES AND PERCHERONS

I did not exhibit at any shows during 1914. I am still in the horse business, and at present have the best lot of Stallions and Mares I ever had at any one time, 29 head; 17 Clyde Stallions and 4 Mares, 5 Percheron Stallions and 3 Mares; a visit to my stable will convince you I have more high-class horses than can be found in any one stable in Canada, and won't be undersold by any dealer in Canada; always a pleasure to show stock to intending purchasers, sale or no sale.

T. H. HASSARD,

Locust Hill Station only 3 miles, C.P.R. Long-Distance Phone.



Royal Oak Clydesdales Present offering: 5 imported mares (3 with foal by side), 2 yearling fillies (1 imp. and 1 Canadian-bred 6-year-old stallion, 1 Canadian-bred 2-year-old stallion, 1 Canadian-bred 6-year-old stallion). Also **Berkshire Hogs** of either sex, all ages.
G. A. ATTRIDGE, MUIRKIRK, ONTARIO
P. M. and M. C. Ry.

L.-D. Phone, Ridgeway