

RAILROADS
INDIAN PACIFIC
CHICAGO EXPRESS
CHICAGO—DETROIT—CHICAGO
 The Canadian No. 21
 AL. 8.45 a.m. 10.00 p.m.
 7.45 a.m. 9.25 p.m.

CHICAGO (YONGE ST.)
 Windsor Street 10.50 p.m. daily.
 Observation, Standard Sleepers and Coaches.

TICKET OFFICES:
 James Street Phone Main 8123
 Place Viger and Windsor Street Station

Endowments of the Mutual of Canada
 Dejected speculators in mining stocks, real estate bargains, oil shares, etc., bestowed the landscape thick as autumn leaves these days. Their hopes have fallen "thick in the blast."
 The lucky man to-day is the one who invested his money in Mutual Life Endowment policies! These combine household protection with a safe and remunerative investment.
 Each \$100.00 invested has produced all the way from \$127.00 to \$192.00, according to the term of the endowment, exclusive of the insurance feature.
 Mutual Life endowments are the very thing to buy and to SELL in days of panic and in war-time.

The Mutual Life Assurance Co. of Canada
WATERLOO ONTARIO

The London & Lancashire Life & General Assurance Association, Limited
 Offers Liberal Contracts to Capable Field Men
GOOD OPPORTUNITY FOR MEN TO BUILD UP A PERMANENT CONNECTION.
 We particularly desire Representatives for City of Montreal.
 Chief Office for Canada:
 114 ST. JAMES STREET, MONTREAL.
 ALEX. BISSETT, Manager for Canada.

British America Assurance Company
 FIRE INSURANCE SINCE A.D. 1833.
 W. R. BROOK, President.
 W. B. MEIKLE, Vice-President.
 PROVINCE OF QUEBEC BRANCH:
 Lewis Building, 17 St. John Street MONTREAL.
 THOMAS F. DOBBIN, Resident Manager.
 Have Vacancies for a few good City Agents.
 Founded in 1898

THE LAW UNION AND ROCK INSURANCE CO. LIMITED
 OF LONDON
 Assets Exceed \$47,000,000.
 Over \$11,000,000 Invested in Canada.
 FIRE AND ACCIDENT RISKS Accepted.
 CANADIAN HEAD OFFICE:
 22 BEAVER HALL HILL MONTREAL
 Agents wanted in unrepresented towns in Canada
 J. E. E. DICKSON, Canadian Manager.
 W. D. AIKEN, Superintendent-Accident Dept.

RAILWAY EARNINGS.
 of Lake Erie, September gross \$58,253,252; net \$153,316; decrease, \$14,600,000.
 of Chicago & North Western, September gross, \$381,404; decrease, \$200,385.
 at Line—September gross, \$218,554,449. Net \$92,331; decrease, \$35,448,649.
 Gross, \$6,938,463; decrease \$102,811; decrease, \$477,399.

Commercial Union Assurance Co. LIMITED
 OF LONDON, ENG.
 The Largest General Insurance Company in the World.
 AS AT 31st DECEMBER, 1913.
 Capital Fully Subscribed \$14,750,000
 Capital Paid up 1,475,000
 Life Fund and Special Trust Fund 69,826,740
 Total Annual Income Exceeds 42,500,000
 Total Funds Exceed 124,500,000
 Total Fire Losses Paid 164,429,230
 Deposits with Dominion Government 1,077,033
 Head Office, Canadian Branch—Commercial Union Building, 222-228 St. James Street, Montreal.
 Applications for Agencies solicited in unrepresented districts.
 J. McCREGOR, Mgr. Canadian Branch
 W. S. JOELING, Asst. Manager

UNION ASSURANCE SOCIETY LIMITED
 OF LONDON, ENGLAND
 FIRE INSURANCE SINCE A.D. 1741.
 Canada Branch, Montreal:
 T. L. MORRISSEY, Resident Manager.
 North-West Branch, Winnipeg:
 THOS. BRUCE, Branch Manager.
 AGENCIES THROUGHOUT THE DOMINION.

THE BRITISH CANADIAN REALTY AND INVESTMENT CO. LIMITED
 Real Estate, Timber Limits, Farm and Coal Lands, Water Powers.
 J. T. BETHUNE
 Managing Director.
 605-606 TRANSPORTATION BUILDING.
 Cable Address: BRITISHCAN.
 Codes: Western Union and Premier Bentley.

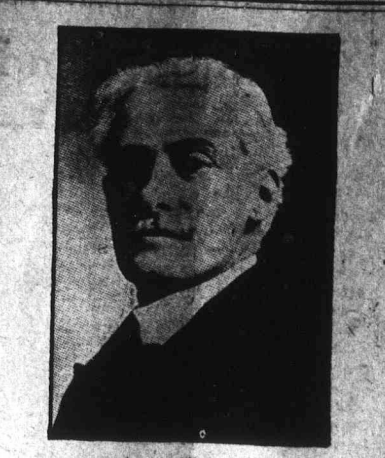
North American Life Assurance Co.
 Solid as the Continent.
 — 1913 —
 Insurance in force over \$52,000,000.00
 Assets 14,045,814.69
 Net Surplus 1,781,117.49
 Income 2,563,115.88
 For Information as to Agency Openings Write to the Home Office - TORONTO

AN IDEAL INCOME
 can be secured to your Beneficiary with Absolute Security by Insuring in the **Union Mutual Life Insurance Company, Portland, Maine** on its **MONTHLY INCOME PLAN**
 Backed by a deposit of \$1,000,000.00 per value with the **DOMINION GOVERNMENT** in cream of Canadian Securities.
 For full information regarding the most liberal Monthly Income Policy on the market write, stating age at nearest birthday, to
WALTER I. JOSEPH, Manager
 Province of Quebec and Eastern Ontario.
 Suite 502 MCGILL BLDG. MONTREAL, QUE.

BIGGEST DOOR TO BANK VAULT IN THE WORLD

New Building of Equitable Life Assurance Society in New York Can boast of Many Things, Including Gigantic Vault Door.

The appointments of the banking offices of J. P. Morgan & Co. in the new palatial building of the Equitable Life Assurance Society in New York city will embrace the biggest door for the largest bank vault in the world, which was constructed at the plant of the Bethlehem Steel Company.
 There are really some wonderful features about this big door, which will cost \$75,000, and the vault to which it will be attached will cost \$200,000. The door and the vestibule attached thereto weigh 120 tons, and took a whole year to construct. The vault will be three stories high.
 So finely machined and mechanically correct are the dimensions of the door and the hinges on which it swings that it takes but the slightest pressure to close it when open. It is absolutely air and water-tight and impervious to drilling, sledging, wedging, explosives or even a cannon shot. It is stated that its solid armor-plate, such as used on modern battle-ships, will withstand the penetration of any field gun.
 Even if the building in which it is constructed should some day collapse for any reason the vault would remain intact. If a burglar should attempt to wedge the vault he would have to exert a pressure of 2380,000 pounds to the linear foot. The sharpest drill made would make only a bright spot on its surface.
 The door's vestibule is 11 feet 6 inches in diameter, and the door, which fits in, is 9 feet in diameter. The door is 45 1/2 inches thick, and is controlled by 20 five-inch bolts, which in turn are controlled by two of the best combination locks, and these by a time lock with four movements, so arranged that any one of these movements will permit the opening of the combination locks. This is arranged so as to avoid the possibility of a lockout.
 The door swings on a crane-hinge which provides a mechanism to force it to its seat and make an absolutely air and water-tight fit, which would prevent the introduction of any liquid explosives.
 The door, vestibule and vault are made of Harvey-nickel armor-plate, the most modern construction in vault-building. These plates are made of the full thickness and are not held together by screws, but are dovetailed on the inner edges. After being fitted tightly, wedges are driven on the inside to hold the plates solidly to their place. This makes a construction that is impervious to any method of attack.



A. E. DOVGVAN, M.P.P., Manager of the Mutual Life Insurance Company of New York, and who is connected largely with the financial life of London. He is also renowned as a public speaker, and is the popular member for Brockville.

REAL ESTATE AND TRUST COMPANIES

Quotations for to-day on the Montreal Real Estate Exchange, Inc., were as follows—

	BID	ASKED
Aberdeen Estates	125	125
Arcade Land Co.	70	100
Beudin Ltd.	70	100
Bellevue Land Co.	70	100
Bleury Inv. Co.	70	100
Caledonian Realty (cont.)	15	18
Canadian Consolidated Land	3	5
Cartier Realty	3	5
Central Park, Lachine	100	107 1/2
Charing Cross Industrial Co.	130	130
City Central Real Estate (com.)	13	13
City Estates, Limited	55	55
Corporation Estates	55	55
Cote St. Luc & R. Inv.	50	52
Credit National	171	171
Crystal Spring Land Co.	58	61
Damous Realty Co., Limited	45	50
Dennis Realty, Limited	75	93
Dorval Land Co.	15	20
Drummond Realities, Limited	15	20
Eastmount Land Co.	90	97 1/2
Greater Montreal Land Inv. (com.)	174	180
Greater Montreal Land Inv. (pfd.)	100	118
Highland Factory Sites, Limited	25	39
Improved Realities, Limited (pfd.)	50	60
Improved Realities Limited (com.)	76	100
K & R Realty Co.	70	78 1/2
Kenmore Realty Co.	70	78 1/2
La Compagnie D'Immeubles Union Ltd.	55	68
La Compagnie Immobiliere Litu Can., Ltd.	40	73
La Compagnie Immobiliere Ouest de N. D. de Grace	91	94 1/2
La Compagnie Industrielle D'Immeubles, Ltd.	92	92
La Compagnie Montreal Est. Ltd.	90	102 1/2
La Compagnie Nationale de l'Est	80	90
Lachine Land Co.	125	125
Landholdings, Limited	108	108
Land of Montreal	108	108
La Saie Realty	97	97
La Societe Blvd. Pie IX	64	64
Lauzon Dry Property Co., Limited	80	80
Longueuil Realty Co.	100	100
L'Union de l'Est	100	100
Model City Annex	40	40
Montreal Deb. Corporation (pfd.)	10	10
Montreal Deb. Corporation (com.)	34	34
Montreal Western Land	80	80
Montreal Western Land Co., Limited	92	92
Montreal Factory Lands	55	60 1/2
Montreal Lachine Land	95	101 1/2
Montreal Land & Imp. Co., Limited	94	94
Montreal South Land Co., Ltd. (pfd.)	40	58 1/2
Montreal South Land Co., Ltd. (com.)	10	18 1/2
Montreal Welland Land, Ltd. (pfd.)	10	20
Montreal Welland Land, Ltd. (com.)	10	20
Montreal Western Land Co., Limited	85	85
Mountain Sights, Limited	76	95
Mutual Bond & Realities Corporation	76	95
Nesbit Heights	50	84 1/2
North Montreal Land, Limited	125	133
North Montreal Land, Limited	150	150
Notre Dame de Grace Realty	100	100
Orchard Land, Limited	100	125
Ottawa Bay Property Co., Limited	100	119
Pointe Claire Land	100	124 1/2
Quebec Land Co.	175	178
Rivera Estates	65	78
Riverview Land Co.	100	100
Rockfield Land Co.	27	34
Roshill Park Realities Co., Limited	16	16
St. Andrew's Land Co.	74	9
St. Catherine Road Co.	75	80
Security Land Reg.	75	80
St. Denis Realty Co., Limited	75	90
St. Lawrence Heights, Limited	120	120
St. Lawrence Inv. & Trust Co.	85	90
St. Regis Park	95	102 1/2
South Shore Realty Co., Limited	34	34
St. Paul Land Co.	650	684
Summit Realities Co.	39	45
Transportation Bldg. (pfd.)	80	82 1/2
Union Land Co.	130	142
Viewbank Realities, Limited	140	149
Westworth Realty	75	77
Westworth Realty Co.	65	80
West End Land Co., Limited	65	80
Windsor Arcade Bldg. 9 1/2% with 100% bonus	—	79

A Satisfied Policyholder

writes the Canada Life as follows: "I am today in receipt of the Bonus Addition of \$1,861.90 in connection with my policy for \$5,000, and as this is over 42% of my total ten premiums, I am very greatly pleased."
 The policy referred to is on the ten payment life plan. It is now fully paid up, but will continue to receive dividends during the life of its holder.
 The Canada Life is each year earning more surplus than ever before. That is one reason for the popularity of the

Canada Life Assurance Company
 The Independent Order of Foresters
 Policies issued by the Society are for the protection of your family and cannot be bought, pledged or sold.
 Benefits are payable to the beneficiary in case of death, or to the member in case of his total disability, or to the member on attaining seventy years of age.
 Policies issued from \$500 to \$5,000.
 TOTAL BENEFITS PAID - 42 MILLION DOLLARS
 FRED. J. DARCH, S.S.
 Temple Bldg., Toronto, Can.
 ELLIOTT G. STEVENSON, S.C.R.
 Temple Bldg., Toronto, Can.

The Provident, Accident and Guarantee Company
 Issues the following policies: Health, Accident, Burglary, Plate Glass, Contract Bonds, Fidelity Bonds, Automobile, Judicial Bonds, Employers' and Public Liability.
 HEAD OFFICE: — MONTREAL, 160 St. James St. — Tel. Main 1628.

LEGAL DIRECTORY
 F. J. CURRAN, Barrister and Solicitor
 Savings Bank Chambers 181 St. James St., Montreal
 Phone Main 127

EDUCATIONAL
THE ART OF NOT FORGETTING
 Students desiring some assistance in their studies should apply to
 THE REV. M. O. SMITH, M.A.
 No. 78, McGill College Ave., Montreal
 INSTRUCTOR IN THE LANGUAGES AND MATHEMATICS.

ACCOUNTANTS
 Phone Main 3898
 Audits—Commercial, Municipal, Financial
 Investigations, Liquidations, etc.
ROBSON, HILL, RITCHIE & DAVY
 ACCOUNTANTS AND AUDITORS
 J. J. Robson, L.L.B.; M. S. Temple Hill, C.A.; Chas. F. Ritchie, C.A. (Can.), C.A. (Scott.); John H. Davy, C.A.
 MCGILL BUILDING, MONTREAL

ALFRED WALFORD, L.L.A.
 ACCOUNTANT AND AUDITOR
 Investigations, Reports, Annual Audits
 410 LAKE OF THE WOODS BLDG.
 PHONE MAIN 6386

BONDS AND DEBENTURES:
 Alex. Bldg. 7% sec. mtg. bonds, with 50% bonus com. Bonds. 75 76
 Arena Gardens, Toronto, 8% Bonds. 70 74
 Caledonian Realities Co., Ltd. 8% Bonds. 75 80
 City Central Real Estate Bond. 75 80
 City B. & Inv. Co., Cond. 77 77
 Montreal Trust Gold Bond. 95 101
 Montreal Deb. Corp. 9 1/2% pfd. 39 39
 Transportation Bldg. (pfd.) 70 70

TRUST COMPANIES:
 Crown. 110 112 1/2
 Eastern. 160 161 1/2
 Marcell Trust Co. 250 290
 Montreal. 181 200
 National (com.). 221 221 1/2
 Prudential (com.). 490 505
 Prudential 7% pfd., 50% paid up (pfd.). 95 116
 Eastern, Security. 80 90

ST. LAWRENCE INVESTMENT.
 At a meeting of the directors of the St. Lawrence Investment & Trust Co. with Senator Curry, president, in the chair, the usual half-yearly dividend of 3 per cent. was declared payable on Monday, November 1.
 German troops in Central Belgium have exhausted their petrol supply. Oil is now issued only to heavy howitzers and then in small quantities.

FRED W. G. JOHNSON
 INSURANCE AND REAL ESTATE
 811 Board of Trade Building
 Telephone: — — — Main 7623; Up 1329
 Your patronage solicited

REAL ESTATE

Real estate, which has been particularly strong throughout the week, continued so yesterday with the formal conclusion of forty-one sales. The largest was the purchase by Jean Baptiste A. Wilson from Albert Piche of lots 2-4-7-1 to 5 and 8-4-6-1 to 7 Cote St. Louis, with buildings thereon in Beaubien street. The price paid was \$2,467.53.

Joseph Aubin purchased from Joseph Charles Juvain lots 12-120 and 121 and the northwestern portion of lot 12-122 St. Jean Baptiste ward, with Nos. 1124 to 1240 St. Hubert Street, for \$49,000.

Joseph U. Meunier purchased from N. D. Leger lots 11-221 and 222 Cote St. Louis, situated on St. Lawrence Boulevard, Laurier ward, and lots 488-188 and 189 parish of Sault au Recollet, on Chateaubriand Street, the whole being vacant. The consideration was \$30,000.

William Joseph Kelly and others sold to Max Stream lot 1118 St. Ann ward, measuring 42 feet by 81 feet, with buildings on Notre Dame Street West, for \$15,000.

Tancredo Hamelin sold to George Senecal 1224-17 and the southeast part of lot 1224-18 St. Mary Ward, with 670 to 580 Desolimes Avenue, for \$12,000.

J. H. Hand sold to E. J. Clark the northwestern part of lot 215-104 and the southeast part of lot 215-106 parish of Montreal, with No. 453 Victoria Avenue, Westmount, for \$10,500.

FAVORABLE DECLINE IN RATE OF MARITIME INSURANCE

In Spite of Reported Activities of German Cruisers in Destroying Merchantmen, Rate Declines One Per Cent.

In spite of the reported activities of German cruisers in destroying English merchantmen the list of maritime insurance rates issued by the American Institute of Marine Underwriters for the week ending October 31 shows favorable declines as compared with the previous bulletin.

In the previous bulletin the risks for ships and cargoes bound for London and English and French channel ports were 2 1/2 per cent for neutrals and 1 1/2 per cent for the former, 1 per cent for neutrals and 1/2 per cent for Americans. The former rate for ships destined for the English and Scottish southeast coast was 5 per cent for belligerents and neutrals and 2 per cent for Americans. They are now 3 per cent for neutrals and 2 per cent for Americans.

For ships destined for South and West Africa the belligerent rates have declined from 5 per cent to 3 1/2 per cent, and to East Africa the rate has dropped from 5 per cent to 4 per cent. Shipments directed to Australia, the Philippines and New Zealand are now quoted at 4 per cent for those of belligerent nations, 2 per cent for neutrals and 1 1/2 per cent for Americans. This compares with 5 per cent for the merchant ships of the allies, 2 per cent for those of neutrals and 1 1/2 per cent for Americans in the last previous bulletin of the Institute.

RESUMES CONFERENCE.
 Washington, October 31.—Federal Reserve Board will resume at 10 o'clock the conferences with Sir George Paish and Basil B. Blackett and the New York bankers.

PERSONALS

Mr. W. I. Mason leaves for England on Monday, sailing by the steamship Lusitania, from New York.

Senor Francisco Jose Prado, a civil engineer, from Santiago de Chile, arrived at the Ritz-Carlton yesterday from a trip round the world.

Mr. W. Dawson, who is well known to shipping men as publicity man for the Allan Line, has severed his connection with steamship work and will enter the office-fitting business with his brother, under the firm name of Dawson Brothers.

Major H. S. Square, of the 34th Fort Garry Horse, has left Canada for England to join his regiment at Salisbury.

Theodore Roosevelt, addressing Princeton students, sounded a grave warning against the military unpreparedness of the United States.

It is understood King George will visit the Canadian camps next Wednesday on returning from Sandringham.

Dr. W. G. Anglin, professor at Queen's Medical College and senior surgeon of Kingston General Hospital, has offered his services to the Department of Militia as superintendent of the Canadian base hospital at the front.

STEAMER ADMIRAL GANTEUME TORPEDOED.
 Bordeaux, October 31.—According to official statement issued by Minister of Marine, the refugee ship Admiral Ganteume, recently sunk off Boulogne, was torpedoed by the German submarine.
 This is the first news of German submarines operating in the Straits of Dover.

COMMERCIAL PAPER.
 New York, October 31.—Commercial paper continues to move locally in fair volume. Rate for prime names is unchanged at 6 per cent. In the country, banks are buying paper not so well known at 4 1/2 to 7 per cent.

TO LECTURE ON WORKMEN'S COMPENSATION LAW.
 New York, October 31.—With a view of increasing the public understanding of the objects and effects of the Workmen's Compensation Law in its relation to accident prevention, Deputy Superintendent James J. Hoey, of the State Insurance Department, has written to the Chairman of Lectures of the Department of Education, suggesting a series of lectures on the Workmen's Compensation Law and accident prevention.

The Chairman referred the matter to Dr. Leipsiger, who is in charge of the lecture work. He is enthusiastic on the subject, and asked Mr. Hoey to suggest names of those qualified to deliver such lectures. The names thus far submitted include those of Prof. A. A. Whitney, of the Workmen's Compensation Service Bureau, Leon S. Senior, of the Compensation Inspection Rating Board, and Messrs. Ryan, Conway and Keller, of the New York Insurance Department. These gentlemen are now preparing lectures and beginning January 1st, a series of lectures will be given in the educational institutions of Greater New York.

Deputy Hoey has also written the Boards of Education and Chambers of Commerce of all the important cities of the State, suggesting that they undertake a similar campaign to enlighten the public as to the needs of accident prevention and the benefits of the Compensation Law.

CLASSIFIED ADVERTISEMENTS

2c. Per Word for the First Insertion 1c. Per Word for Each Subsequent Insertion

BUSINESS OPPORTUNITIES.
 SUM OF \$7,000 TO \$10,000 ON FIRST MORTGAGE real estate valued \$10,000. Address Dr. Handfield, 244 St. Catherine East, East 2729.
FOR SALE OR EXCHANGE.
 KINDLING WOOD FOR THE MILLION—Kindling \$2.25; Cut Hardwood, \$3.25; Mill Blocks, \$2.00 per load. "Molascul" for horses, J. C. McDiarmid, 402 William Street. Tel. Main 452.

EXCEPTIONALLY SITUATED OFFICES TO LET.
 Well fitted in every particular. St. Peter Street, corner St. James. Apply The Eastern Trust Co., Canada Life Building.

BUSINESS PREMISES TO LET.
 WE HAVE some very fine offices, show rooms, in the Windsor Arcade Building, corner of Peel and St. Catherine streets, and Southam Building, 128 Bleury street. For further particulars and booklet, apply The Crown Trust Company, 145 St. James street, Main 7999.

FLOOR SPACE, about 6,000 square feet; well lighted, also heated, if required; first story; could be used for light manufacturing, or storage. Situated next to C.P.R. freight sheds, Mile End. Apply to Standard Chemical, Irons and Lumber Co., 624 St. Ambroise St., Phone W. 1554.

MOVING PICTURE HALL to let on Mount Royal Avenue. The best part of the north of the city. 600 seats. 1023 Mount Royal East.

PHILLIPS SQUARE. Near St. Catherine street—Store to let, heated, no taxes. Apply Jas. H. Maher, 174 Transportation Building, 129 St. James street. Phone Main 2530.

HIGH CLASS APARTMENTS.
 599 SHERBROOKE WEST, Ritz-Carlton Block. Single and double rooms, suites. First-class board; evening dining.

CORNER PARK AND BERNARD—Splendid new store, cement cellar, heated, water tax, suitable for any kind of business. Apply 2481 Park Avenue. Phone St. Louis 5788. Evening, Rockland 632.

POINCLANA APARTMENTS, 56 Sherbrooke Street West—Very desirable apartments, four to six rooms, hot water and janitor service; immediate occupancy; moderate rentals. Further information, apply to janitor or The Crown Trust Company, 145 St. James Street, Main 7999.

ROYAL GEORGE APARTMENTS—Beautiful furnished apartments of five and seven rooms, equipped with all modern conveniences, cold storage, vacuum cleaner, electric dumb waiters, elevator service; janitor service; centrally located. Rentals moderate. Apply at the office, 214 Bishop street, Tel. Up. 3375.

RIGI—Bright apartments in the Rigi, 271 Prince Arthur street west; fire-proof; two balconies; vacuum cleaner. Apply to janitor, Phone Up. 521

SHAKESPEARE APARTMENTS, 2249 Hutchison—7 rooms, heated, hot water all year round; electric fixtures, gas ranges, refrigerator; janitor service. Apply janitor or Phone Main 5498; evenings, St. Louis 2518

PERSONAL.
 "IT'S A LONG WAY TO TIPPERARY" but its only 75 miles to THREE RIVERS from Montreal. Three Rivers is inviting all capitalists to turn their eyes in that direction as an ideal spot for factories. Excellent location; unshipped quantities of fuel and a hundred other attractions. A dainty booklet free for the asking. To-day is the day to write to it. Bureau of Publicity, Three Rivers, Que.

SITUATIONS WANTED—FEMALE.
 COMPETENT LADY STENOGRAPHER (BOTH LANGUAGES), experienced in Financial, Law and Commercial work, desires position; or would take temporary position. Good references. Address: A. M., 1290 Cartier street, City.

MISCELLANEOUS.
 FOR SALE, TRUSTWORTHY CUTLERY—This fine cutlery is all that the name implies. Made of the best Sheffield shear steel, fitted into the handles by a patent method. Handles of Sterling Silver, Prince's Plate, Tuxedo, (the nearest substitute for Ivory), or Stag. You will appreciate the True worth of Trustworthy Cutlery when you use it. Mappin & Webb, Jewellers, St. Catherine Street West, Montreal.

AUTOMOBILE STORAGE.
 AUTOMOBILES STORED FOR WINTER MONTHS, in heated building; cement floors, finest in city; low insurance rates; touring cars, \$7 per month; runabouts and coupes, \$5 per month. Terminal warehouse, 36 Grey Nun Street. Phone Main 8669.

LARGE STORAGE FOR AUTOMOBILES, CARRIAGES, WAGGONS, also repairs of all kinds at reasonable price! Jos. Bonhomme, Limited, 200 Guy.

FARMS FOR SALE.
 FARM—40 acres, near Smith's Falls, \$1,400; 10 acres, Kempville, Ont., \$1,000; 97 acres, Morin Heights, Que., \$1,200; 152 acres, Margot, \$1,800. Corbett, 558A St. Denis.

COUNTRY HOUSES TO LET.
 BEACONSFIELD—Two good winter houses, at very low rent