

**ARE YOU DEAF OR HARD OF HEARING?**

If so, get a pair of Tugendhaft's **PATENT INVISIBLE EAR DRUMS** Which restores hearing immediately. **Every Pair Guaranteed.—Price \$3.50 per Pair.** Mail Orders will receive prompt attention

If you are troubled with Weak or Sore Eyes and Headaches, you would do well to call and have your eyes examined free of charge, by an expert Optician.

**M. D. TUGENDHAFT,**  
OPTICAL SPECIALIST,  
406 Bank Street, Ottawa, Can.



**MAIL CONTRACT.**

**SEALED TENDERS** addressed to the Postmaster General will be received at Ottawa until noon on Friday, 26th November, 1909, for the conveyance of His Majesty's Mails, on a proposed contract for four years, 12 times per week each way between Apple Hill and Martintown, from the first January next.

Printed notices containing further information as to conditions of proposed Contract may be seen and blank forms of Tender may be obtained at the Post Office of Apple Hill and Martintown, and at the Office of the Post Office Inspector at Ottawa.

G. C. ANDERSON,  
Superintendent.

Post Office Department, Mail Service Branch, Ottawa, 11th October, 1909.

**Rideau Lakes Navigation COMPANY**

**OTTAWA to KINGSTON**

By the far-famed scenic Rideau, the most picturesque inland water route on the Continent.

By Rideau Queen on Mondays and Thursdays, and Rideau King Tuesdays and Fridays, at 2 p.m., from Canal Basin.

Tickets for sale by Ottawa Forwarding Co. and Geo. Duncan.

**WHY A TRUST COMPANY**

is the most desirable Executor, Administrator, Guardian and Trustee:

"It is perpetual and responsible and saves the trouble, risk and expense of frequent changes in administration."

**The Imperial Trusts**

COMPANY OF CANADA

Head Office 17 Richmond St. West

**JOHN HILLOCK & CO.**

MANUFACTURERS OF THE **ARCTIC REFRIGERATORS**

165 Queen St., East,  
Tel. 478, TORONTO

<b>4%</b>	Capital Paid Up, \$2,500,000 Reserve . . . 400,000	<b>4%</b>
Money Deposited with us earns Four Per Cent. on your balances and is subject to cheque.		
<b>THE INTEREST IS COMPOUNDED QUARTERLY</b>		
<b>The Union Trust Co., Limited.</b>		
TEMPLE BLDG., 174-176 BAY ST., TORONTO, ONT.		
<b>4%</b>	Money to Loan Safety Deposit Vaults For Rent	<b>4%</b>

**NOT SCRAPS AND SNIPPETS**

Not condensations or abstracts or extracts but complete articles, reproduced without change from the leading English quarterlies, monthlies and weeklies, by the ablest writers, on the most timely and important subjects, go to the making of

**THE LIVING AGE**

The Best Fiction. The Best Literary Criticism  
The Best Essays. The Best Travel Articles  
The Ablest Discussions of Public Affairs

The LIVING AGE has been published every Saturday without missing an issue for 65 years, and was never more indispensable than now to intelligent readers

**THE LIVING AGE is Alone in its Field**

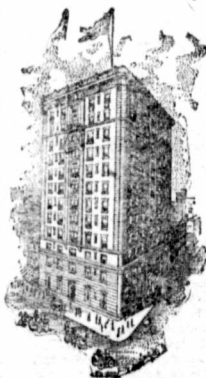
The only American Magazine exclusively devoted to the reprinting, without abridgment, of the most important and interesting articles from the best English periodicals.

Specimen copy free. Terms: \$6.00 a year.  
Three months' Trial Subscription \$1.00

**THE LIVING AGE COMPANY**  
6 Beacon Street. BOSTON, MASS.

**HOTEL CUMBERLAND**  
NEW YORK

S.-W. COR. BROADWAY at 54th STREET  
Near 50th St. Subway and 53d St. Elevated



Headquarters for **Canadians.**

Near Theatres, Shops and Central Park.

**New and Fireproof.**

RATES  
REASONABLE  
\$2 50 with Bath and Up.

**All Outside Rooms.**

10 MINUTES WALK TO 20 THEATRES

**Send for Booklet.**

HARRY P. STINSON, formerly with Hotel Imperial.  
R. J. BINGHAM, formerly of Canada.



**Synopsis of Canadian North-West. HOMESTEAD REGULATIONS**

ANY even-numbered section of Dominion Lands in Manitoba, Saskatchewan, and Alberta, excepting 8 and 26, not reserved, may be homesteaded by any person who is the sole head of a family, or any male over 18 years of age, to the extent of one-quarter section of 160 acres, more or less.

Application for entry must be made in person by the applicant at a Dominion Lands Agency or Sub-Agency for the district in which the land is situate. Entry by proxy may, however, be made at any Agency on certain conditions by the father, mother, son, daughter, brother, or sister of an intending homesteader.

**DUTIES** — (1) At least six months' residence upon and cultivation of the land in each year for three years.

(2) A homesteader may, if he so desires, perform the required residence duties by living on farming land owned solely by him, not less than eighty (80) acres in extent, in the vicinity of his homestead. He may also do so by living with father or mother, on certain conditions. Joint ownership in land will not meet this requirement.

(3) A homesteader intending to perform his residence duties in accordance with the above while living with parents or on farming land owned by himself, must notify the agent for the district of such intention.

W. W. CORY,

Deputy of the Minister of the Interior.

N.B. — Unauthorized publication of this advertisement will not be paid for.

**G. E. Kingsbury**

**PURE ICE**

FROM ABOVE

CHAUDIÈRE FALLS  
Office—Cor. Cooper and Percy Streets, Ottawa, Ont.

Prompt delivery. Phone 935

**OTTAWA RIVER NAVIGATION Co.**  
MAIL LINE STEAMERS.

**OTTAWA & MONTREAL**  
(SHOOTING RAPIDS.)

Steamer leaves Queen's Wharf daily (Sundays excepted) at 7.30 a.m. with passengers for Montreal Excursions to Grenville Tuesdays, Thursdays and Saturdays 50c.

By Montebello every week day, 50c.

Steamer will not stop at East Templeton on east-bound trip.

Ticket Offices—Ottawa Despatch and Agency Co., 229 Sparks St.; Geo. Duncan, 42 Sparks St.; A. H. Jarvis, 157 Bank St.; Queen's Wharf.

TELEPHONE 242.